

Product datasheet for **TA321180**

ALAS1 Rabbit Polyclonal Antibody

Product data:

Product Type:	Primary Antibodies
Applications:	IHC
Recommended Dilution:	IHC: 25-100 Positive control: Human breast cancer Predicted cell location: Cytoplasm
Reactivity:	Human, Mouse, Rat
Host:	Rabbit
Isotype:	IgG
Clonality:	Polyclonal
Immunogen:	Fusion protein corresponding to C terminal 219 amino acids of human aminolevulinate, delta-, synthase 1
Formulation:	PBS pH7.3, 0.05% NaN ₃ , 50% glycerol
Concentration:	lot specific
Purification:	Antigen affinity purification
Conjugation:	Unconjugated
Storage:	Store at -20°C as received.
Stability:	Stable for 12 months from date of receipt.
Gene Name:	5'-aminolevulinate synthase 1
Database Link:	NP_000679 Entrez Gene 11655 Mouse Entrez Gene 65155 Rat Entrez Gene 211 Human P13196

Background: This gene encodes the mitochondrial enzyme which is catalyzes the rate-limiting step in heme (iron-protoporphyrin) biosynthesis. The enzyme encoded by this gene is the housekeeping enzyme; a separate gene encodes a form of the enzyme that is specific for erythroid tissue. The level of the mature encoded protein is regulated by heme: high levels of heme down-regulate the mature enzyme in mitochondria while low heme levels up-regulate. A pseudogene of this gene is located on chromosome 12. Multiple alternatively spliced variants, encoding the same protein, have been identified.

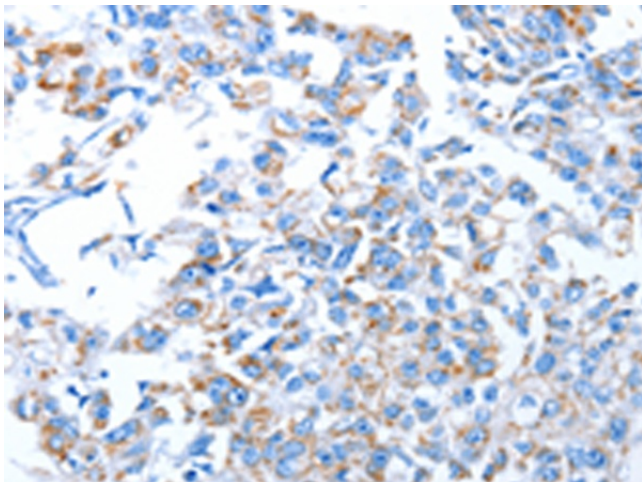


[View online »](#)

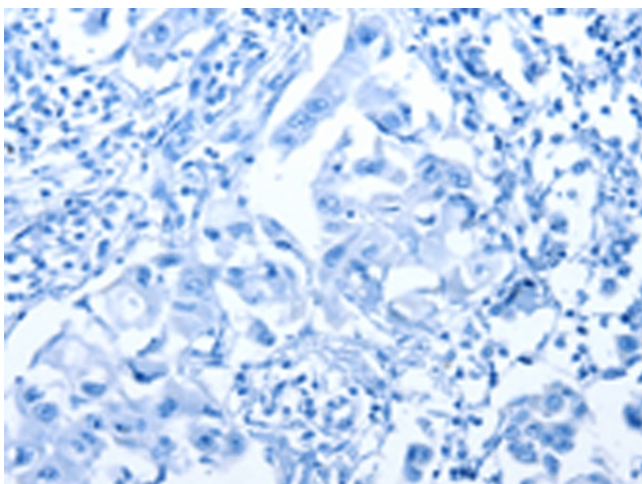
Synonyms: ALAS; ALAS-H; ALAS3; ALASH; MIG4

Protein Pathways: Glycine, serine and threonine metabolism, Metabolic pathways, Porphyrin and chlorophyll metabolism

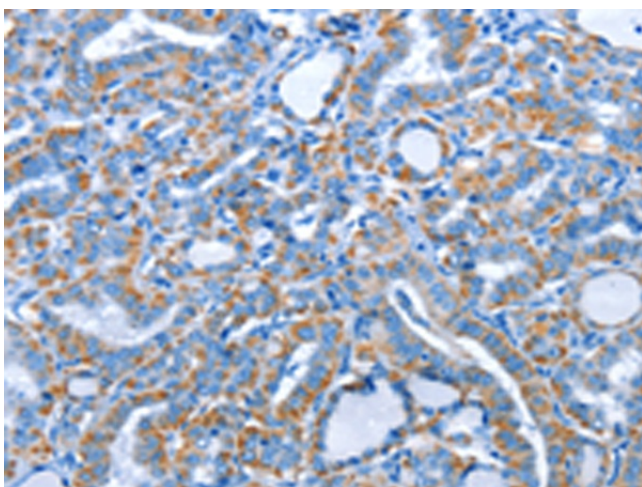
Product images:



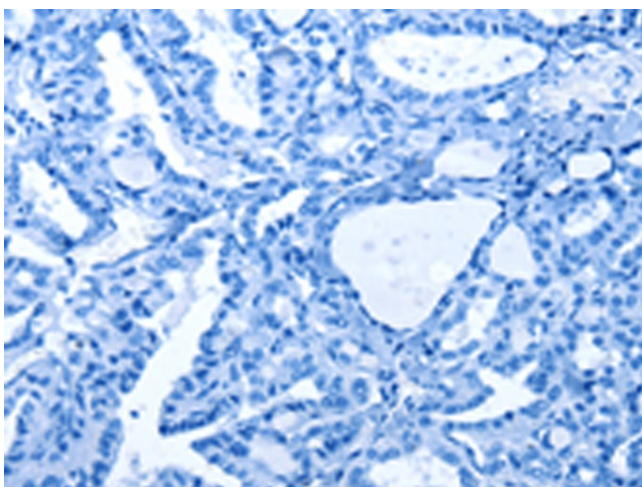
Immunohistochemistry of paraffin-embedded Human breast cancer tissue using TA321180 (ALAS1 Antibody) at dilution 1/30 (Original magnification: $\times 200$)



Immunohistochemistry of paraffin-embedded Human breast cancer tissue using TA321180 (ALAS1 Antibody) at dilution 1/30, treated with fusion protein. (Original magnification: $\times 200$)



Immunohistochemistry of paraffin-embedded Human thyroid cancer tissue using TA321180 (ALAS1 Antibody) at dilution 1/30 (Original magnification: $\times 200$)



Immunohistochemistry of paraffin-embedded Human thyroid cancer tissue using TA321180 (ALAS1 Antibody) at dilution 1/30, treated with fusion protein. (Original magnification: $\times 200$)