

## Product datasheet for **TA321179**

### Angiotensin II Type 2 Receptor (AGTR2) Rabbit Polyclonal Antibody

#### Product data:

Product Type:	Primary Antibodies
Applications:	IHC
Recommended Dilution:	IHC: 25-100 Positive control: Human thyroid cancer Predicted cell location: Cytoplasm
Reactivity:	Human, Mouse, Rat
Host:	Rabbit
Isotype:	IgG
Clonality:	Polyclonal
Immunogen:	Synthetic peptide corresponding to a region derived from 349-363 amino acids of human angiotensin II receptor, type 2
Formulation:	PBS pH7.3, 0.05% NaN <sub>3</sub> , 50% glycerol
Concentration:	lot specific
Purification:	Antigen affinity purification
Conjugation:	Unconjugated
Storage:	Store at -20°C as received.
Stability:	Stable for 12 months from date of receipt.
Gene Name:	angiotensin II receptor type 2
Database Link:	<a href="#">NP_000677</a> <a href="#">Entrez Gene 11609 Mouse</a> <a href="#">Entrez Gene 24182 Rat</a> <a href="#">Entrez Gene 186 Human</a> <a href="#">P50052</a>
Background:	The protein encoded by this gene belongs to the G-protein coupled receptor 1 family; and functions as a receptor for angiotensin II. It is an intergral membrane protein that is highly expressed in fetus; but scantily in adult tissues; except brain; adrenal medulla; and atretic ovary. This receptor has been shown to mediate programmed cell death and this apoptotic function may play an important role in developmental biology and pathophysiology. Mutations in this gene are been associated with X-linked mental retardation.
Synonyms:	AT2; ATGR2; MRX88

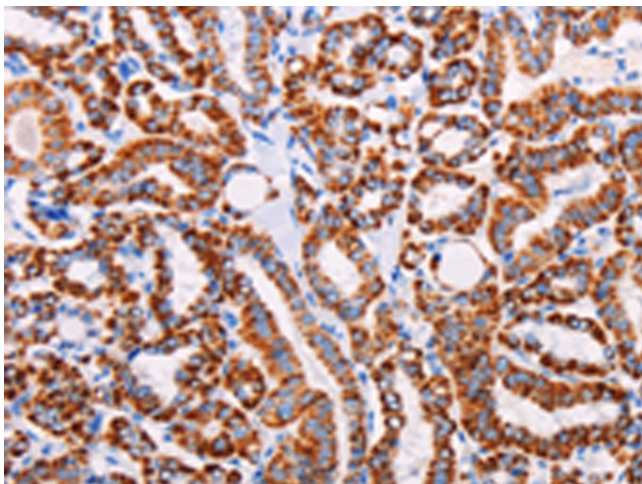


[View online »](#)

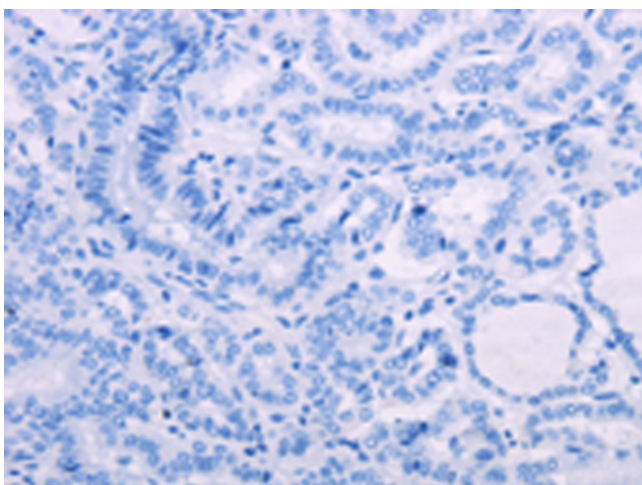
**Protein Families:** Druggable Genome, GPCR, Transmembrane

**Protein Pathways:** Neuroactive ligand-receptor interaction, Renin-angiotensin system

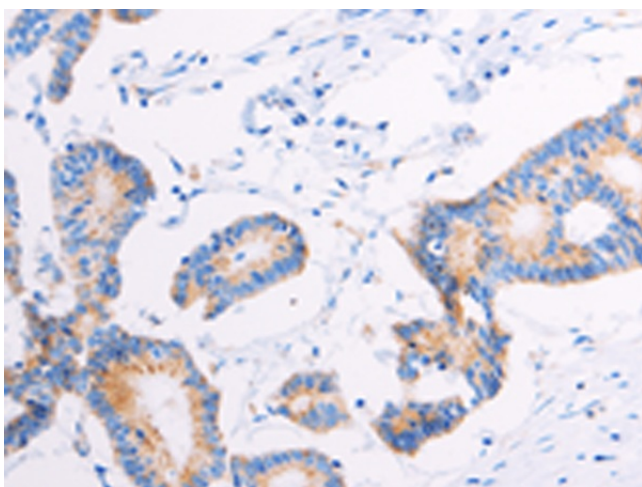
**Product images:**



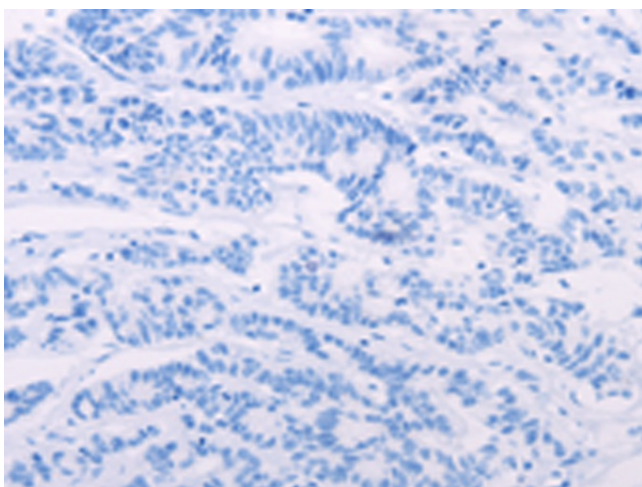
Immunohistochemistry of paraffin-embedded Human thyroid cancer tissue using TA321179 (AGTR2 Antibody) at dilution 1/15 (Original magnification: x200)



Immunohistochemistry of paraffin-embedded Human thyroid cancer tissue using TA321179 (AGTR2 Antibody) at dilution 1/15, treated with synthetic peptide. (Original magnification: x200)



Immunohistochemistry of paraffin-embedded Human colon cancer tissue using TA321179 (AGTR2 Antibody) at dilution 1/15 (Original magnification:  $\times 200$ )



Immunohistochemistry of paraffin-embedded Human colon cancer tissue using TA321179 (AGTR2 Antibody) at dilution 1/15, treated with synthetic peptide. (Original magnification:  $\times 200$ )