

## Product datasheet for **TA321178**

### Angiotensin II Type 1 Receptor (AGTR1) Rabbit Polyclonal Antibody

#### Product data:

Product Type:	Primary Antibodies
Applications:	WB
Recommended Dilution:	WB: 500-2000 WB positive control: K562, 231, HepG2 cell lysates
Reactivity:	Human, Mouse, Rat
Host:	Rabbit
Isotype:	IgG
Clonality:	Polyclonal
Immunogen:	Fusion protein corresponding to a region derived from 301-359 amino acids of human angiotensin II receptor, type 1 angiotensin II receptor, type 1
Formulation:	PBS pH7.3, 0.05% NaN <sub>3</sub> , 50% glycerol
Concentration:	lot specific
Purification:	Antigen affinity purification
Conjugation:	Unconjugated
Storage:	Store at -20°C as received.
Stability:	Stable for 12 months from date of receipt.
Predicted Protein Size:	41 kDa
Gene Name:	angiotensin II receptor type 1
Database Link:	<a href="#">NP_000676</a> <a href="#">Entrez Gene 185 Human</a> <a href="#">P30556</a>



[View online »](#)

**Background:**

Angiotensin II is a potent vasopressor hormone and a primary regulator of aldosterone secretion. It is an important effector controlling blood pressure and volume in the cardiovascular system. It acts through at least two types of receptors. This gene encodes the type 1 receptor which is thought to mediate the major cardiovascular effects of angiotensin II. This gene may play a role in the generation of reperfusion arrhythmias following restoration of blood flow to ischemic or infarcted myocardium. It was previously thought that a related gene; denoted as AGTR1B; existed; however; it is now believed that there is only one type 1 receptor gene in humans. Multiple alternatively spliced transcript variants have been reported for this gene.

**Synonyms:**

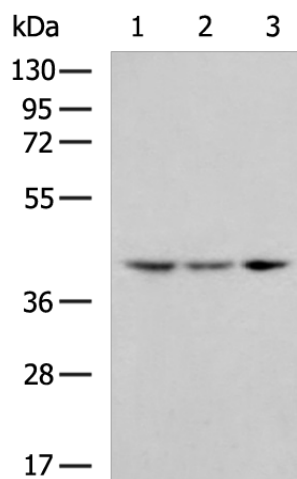
AG2S; AGTR1B; AT1; AT1AR; AT1B; AT1BR; AT1R; AT2R1; HAT1R

**Protein Families:**

Druggable Genome, GPCR, Transmembrane

**Protein Pathways:**

Calcium signaling pathway, Neuroactive ligand-receptor interaction, Renin-angiotensin system, Vascular smooth muscle contraction

**Product images:**

Gel: 8%SDS-PAGE  
Lysate: 40 µg  
Lane 1-3: K562  
231  
HepG2 cell lysates  
Primary antibody: TA321178 (AGTR1 Antibody) at  
dilution 1/550  
Secondary antibody: Goat anti rabbit IgG at  
1/5000 dilution  
Exposure time: 20 seconds