

Product datasheet for **TA321176**

beta 1 Adrenergic Receptor (ADRB1) Rabbit Polyclonal Antibody

Product data:

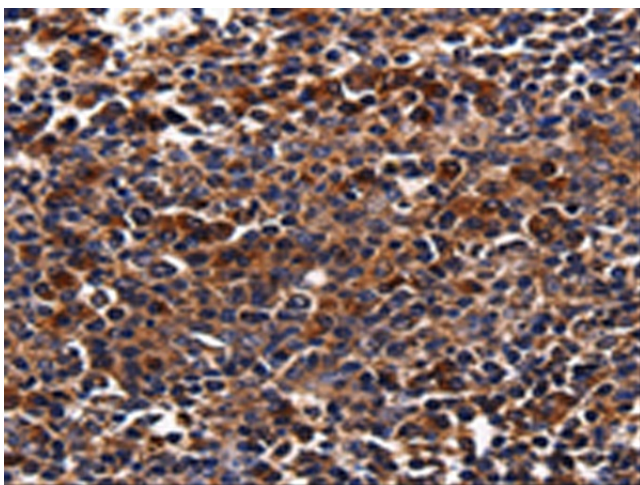
Product Type:	Primary Antibodies
Applications:	IHC
Recommended Dilution:	IHC: 25-100 Positive control: Human tonsil cancer Predicted cell location: Cell membrane, Cytoplasm
Reactivity:	Human, Mouse, Rat
Host:	Rabbit
Isotype:	IgG
Clonality:	Polyclonal
Immunogen:	Synthetic peptide corresponding to a region derived from 41-55 amino acids of Human Beta-1 adrenergic receptor
Formulation:	PBS pH7.3, 0.05% NaN ₃ , 50% glycerol
Concentration:	lot specific
Purification:	Antigen affinity purification
Conjugation:	Unconjugated
Storage:	Store at -20°C as received.
Stability:	Stable for 12 months from date of receipt.
Gene Name:	adrenoceptor beta 1
Database Link:	NP_000675 Entrez Gene 11554 Mouse Entrez Gene 24925 Rat Entrez Gene 153 Human P08588
Background:	The adrenergic receptors (subtypes alpha 1; alpha 2; beta 1; and beta 2) are a prototypic family of guanine nucleotide binding regulatory protein-coupled receptors that mediate the physiological effects of the hormone epinephrine and the neurotransmitter norepinephrine. Specific polymorphisms in this gene have been shown to affect the resting heart rate and can be involved in heart failure.
Synonyms:	ADRB1R; B1AR; BETA1AR; RHR
Protein Families:	Druggable Genome, GPCR, Transmembrane



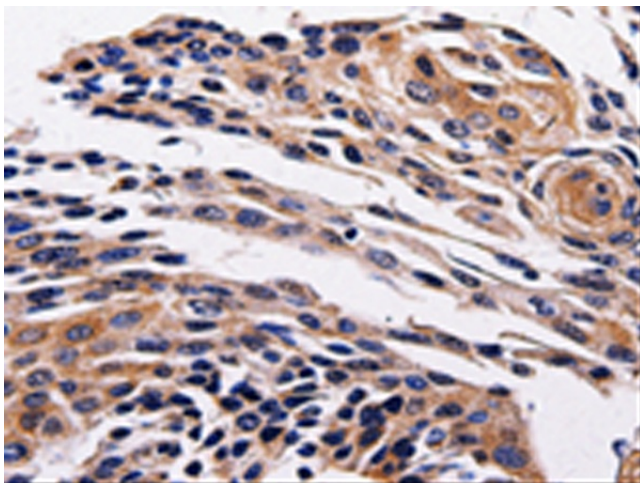
[View online »](#)

Protein Pathways: Calcium signaling pathway, Dilated cardiomyopathy, Endocytosis, Gap junction, Neuroactive ligand-receptor interaction

Product images:



Immunohistochemistry of paraffin-embedded Human tonsil cancer tissue using TA321176 (ADRB1 Antibody) at dilution 1/25. (Original magnification: x200)



Immunohistochemistry of paraffin-embedded Human cervical cancer tissue using TA321176 (ADRB1 Antibody) at dilution 1/25. (Original magnification: x200)