

Product datasheet for **TA321175**

Adenosine A3 Receptor (ADORA3) Rabbit Polyclonal Antibody

Product data:

Product Type:	Primary Antibodies
Applications:	IHC, WB
Recommended Dilution:	WB: 500-2000 WB positive control: LOVO cell, Mouse liver tissue lysates IHC: 50-200 Positive control: Human prostate cancer Predicted cell location: Cytoplasm
Reactivity:	Human, Mouse
Host:	Rabbit
Isotype:	IgG
Clonality:	Polyclonal
Immunogen:	Fusion protein corresponding to C terminal 66 amino acids of human Adenosine receptor A3
Formulation:	PBS pH7.3, 0.05% NaN ₃ , 50% glycerol
Concentration:	lot specific
Purification:	Antigen affinity purification
Conjugation:	Unconjugated
Storage:	Store at -20°C as received.
Stability:	Stable for 12 months from date of receipt.
Predicted Protein Size:	36 kDa
Gene Name:	adenosine A3 receptor
Database Link:	NP_000668 Entrez Gene 11542 Mouse Entrez Gene 140 Human P0DMS8



[View online »](#)

Background:

This gene encodes a protein that belongs to the family of adenosine receptors; which are G-protein-coupled receptors that are involved in a variety of intracellular signaling pathways and physiological functions. The receptor encoded by this gene mediates a sustained cardioprotective function during cardiac ischemia; it is involved in the inhibition of neutrophil degranulation in neutrophil-mediated tissue injury; it has been implicated in both neuroprotective and neurodegenerative effects; and it may also mediate both cell proliferation and cell death. Multiple transcript variants encoding different isoforms have been found for this gene.

Synonyms:

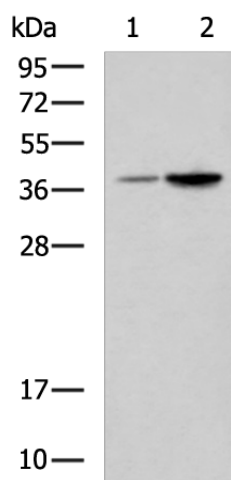
A3AR

Protein Families:

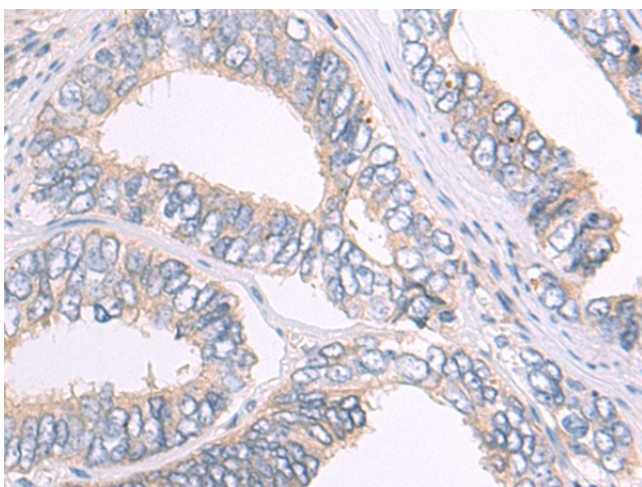
Druggable Genome, GPCR, Transmembrane

Protein Pathways:

Neuroactive ligand-receptor interaction

Product images:

Gel: 8%SDS-PAGE
Lysate: 40 µg
Lane 1-2: LOVO cell
Mouse liver tissue lysates
Primary antibody: TA321175 (ADORA3 Antibody)
at dilution 1/550
Secondary antibody: Goat anti rabbit IgG at
1/5000 dilution
Exposure time: 20 seconds



Immunohistochemistry of paraffin-embedded
Human prostate cancer tissue using TA321175
(ADORA3 Antibody) at dilution 1/95. (Original
magnification: ×200)