

Product datasheet for **TA321171S**

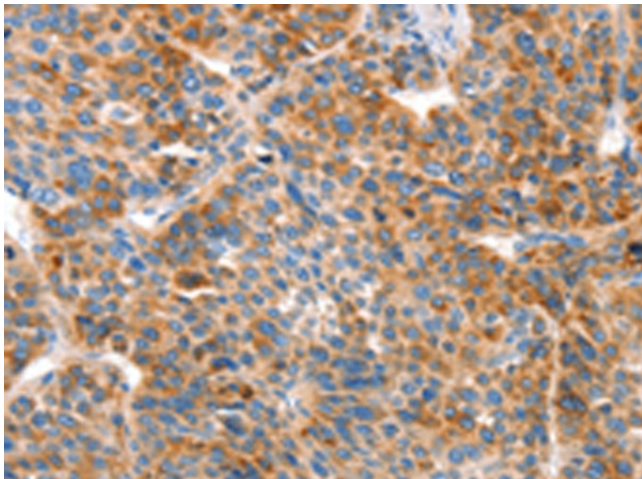
Vitronectin (VTN) Rabbit Polyclonal Antibody

Product data:

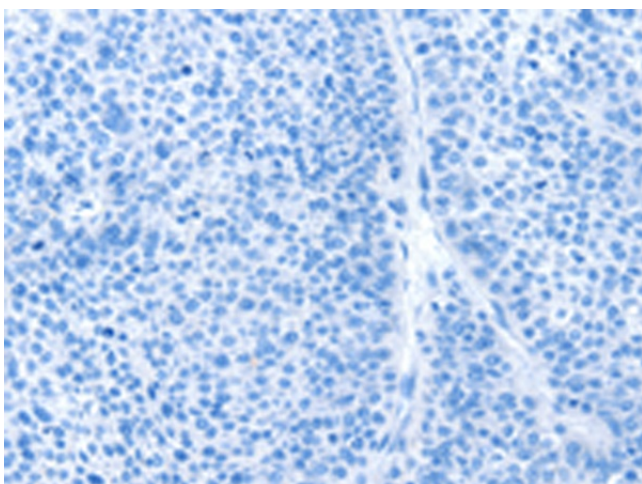
Product Type:	Primary Antibodies
Applications:	IHC
Recommended Dilution:	IHC: 100-300 Positive control: Human liver cancer Predicted cell location: Cytoplasm
Reactivity:	Human
Host:	Rabbit
Isotype:	IgG
Clonality:	Polyclonal
Immunogen:	Synthetic peptide corresponding to a region derived from 141-154 amino acids of human vitronectin
Formulation:	PBS pH7.3, 0.05% NaN ₃ , 50% glycerol
Purification:	Antigen affinity purification
Conjugation:	Unconjugated
Storage:	Store at -20°C as received.
Stability:	Stable for 12 months from date of receipt.
Gene Name:	vitronectin
Database Link:	NP_000629 Entrez Gene 7448 Human P04004
Background:	The protein encoded by this gene is a member of the pexin family. It is found in serum and tissues and promotes cell adhesion and spreading; inhibits the membrane-damaging effect of the terminal cytolytic complement pathway; and binds to several serpin serine protease inhibitors. It is a secreted protein and exists in either a single chain form or a clipped; two chain form held together by a disulfide bond.?
Synonyms:	V75; VN; VNT
Protein Families:	Druggable Genome, Secreted Protein
Protein Pathways:	ECM-receptor interaction, Focal adhesion



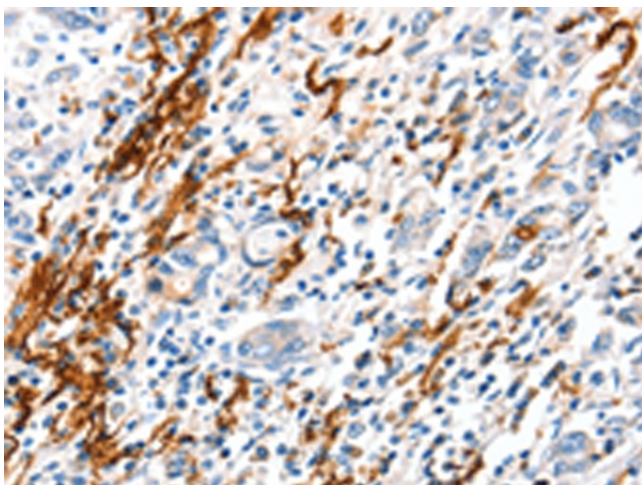
[View online »](#)

Product images:

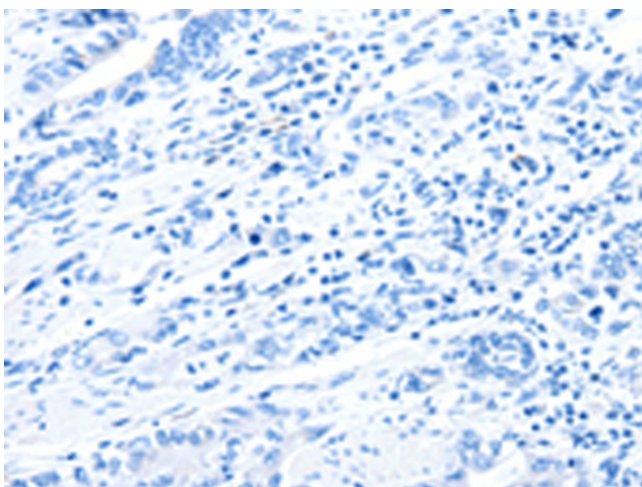
Immunohistochemistry of paraffin-embedded Human liver cancer tissue using [TA321171] (VTN Antibody) at dilution 1/100 (Original magnification: $\times 200$)



Immunohistochemistry of paraffin-embedded Human liver cancer tissue using [TA321171] (VTN Antibody) at dilution 1/100, treated with synthetic peptide. (Original magnification: $\times 200$)



Immunohistochemistry of paraffin-embedded Human gastric cancer tissue using [TA321171] (VTN Antibody) at dilution 1/100 (Original magnification: $\times 200$)



Immunohistochemistry of paraffin-embedded Human gastric cancer tissue using [TA321171] (VTN Antibody) at dilution 1/100, treated with synthetic peptide. (Original magnification: $\times 200$)