

## Product datasheet for **TA321170**

### IL10RB Rabbit Polyclonal Antibody

#### Product data:

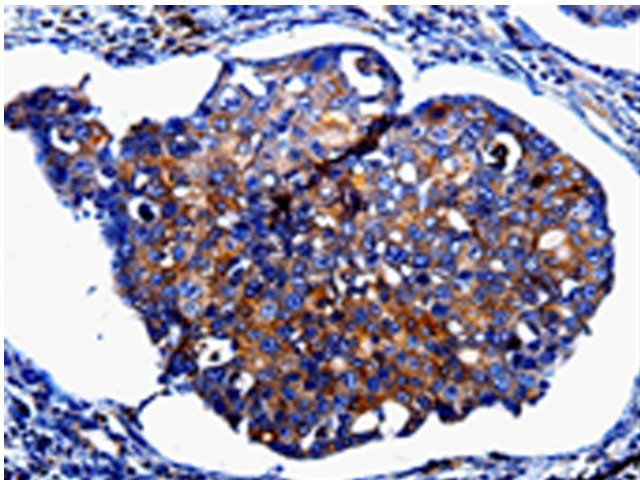
Product Type:	Primary Antibodies
Applications:	IHC
Recommended Dilution:	IHC: 50-200 Positive control: Human breast cancer Predicted cell location: Cytoplasm, Cell membrane
Reactivity:	Human
Host:	Rabbit
Isotype:	IgG
Clonality:	Polyclonal
Immunogen:	Fusion protein corresponding to a region derived from 19-225 amino acids of Human Interleukin-10 receptor subunit beta
Formulation:	PBS pH7.3, 0.05% NaN <sub>3</sub> , 50% glycerol
Concentration:	lot specific
Purification:	Antigen affinity purification
Conjugation:	Unconjugated
Storage:	Store at -20°C as received.
Stability:	Stable for 12 months from date of receipt.
Gene Name:	interleukin 10 receptor subunit beta
Database Link:	<a href="#">NP_000619</a> <a href="#">Entrez Gene 3588 Human</a> <a href="#">Q08334</a>
Background:	The protein encoded by this gene belongs to the cytokine receptor family. It is an accessory chain essential for the active interleukin 10 receptor complex. Coexpression of this and IL10RA proteins has been shown to be required for IL10-induced signal transduction. This gene and three other interferon receptor genes; IFAR2; IFNAR1; and IFNGR2; form a class II cytokine receptor gene cluster located in a small region on chromosome 21.
Synonyms:	CDW210B; CRF2-4; CRFB4; D21S58; D21S66; IL-10R2
Protein Families:	Druggable Genome, Transmembrane



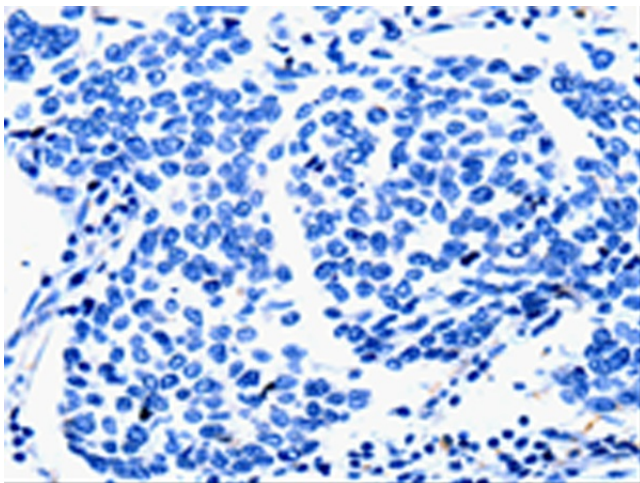
[View online »](#)

Protein Pathways: Cytokine-cytokine receptor interaction, Jak-STAT signaling pathway

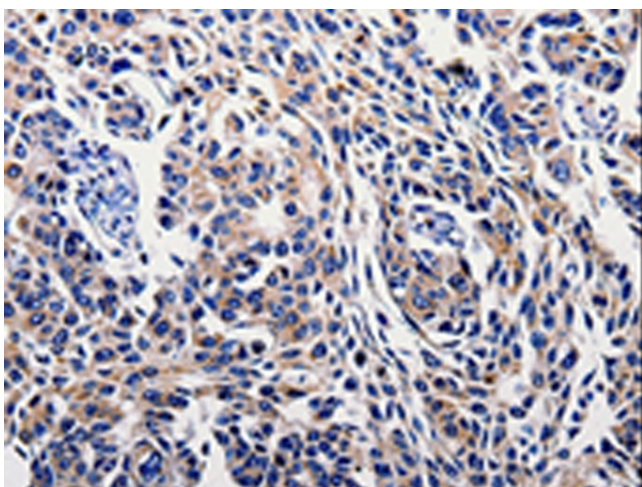
### Product images:



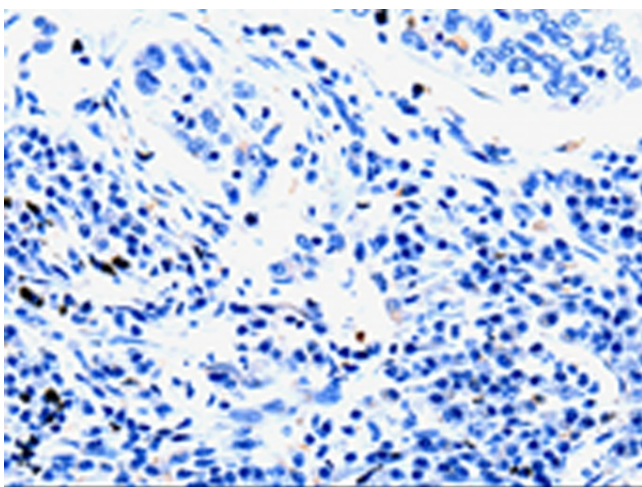
Immunohistochemistry of paraffin-embedded Human breast cancer tissue using TA321170 (IL10RB Antibody) at dilution 1/60 (Original magnification:  $\times 200$ )



Immunohistochemistry of paraffin-embedded Human breast cancer tissue using TA321170 (IL10RB Antibody) at dilution 1/60, treated with fusion protein. (Original magnification:  $\times 200$ )



Immunohistochemistry of paraffin-embedded Human lung cancer tissue using TA321170 (IL10RB Antibody) at dilution 1/60 (Original magnification:  $\times 200$ )



Immunohistochemistry of paraffin-embedded Human lung cancer tissue using TA321170 (IL10RB Antibody) at dilution 1/60, treated with fusion protein. (Original magnification:  $\times 200$ )