

Product datasheet for **TA321168S**

BDKRB2 Rabbit Polyclonal Antibody

Product data:

Product Type:	Primary Antibodies
Applications:	IHC, WB
Recommended Dilution:	WB: 500-2000 WB positive control: HUVEC cell lysate IHC: 25-50 Positive control: Human tonsil Predicted cell location: Cytoplasm
Reactivity:	Human, Mouse, Rat
Host:	Rabbit
Isotype:	IgG
Clonality:	Polyclonal
Immunogen:	Synthetic peptide corresponding to a region derived from 377-391 amino acids of human bradykinin receptor B2
Formulation:	PBS pH7.3, 0.05% NaN ₃ , 50% glycerol
Purification:	Antigen affinity purification
Conjugation:	Unconjugated
Storage:	Store at -20°C as received.
Stability:	Stable for 12 months from date of receipt.
Predicted Protein Size:	45 kDa
Gene Name:	bradykinin receptor B2
Database Link:	NP_000614 Entrez Gene 12062 Mouse Entrez Gene 25245 Rat Entrez Gene 624 Human P30411
Background:	This gene encodes a receptor for bradykinin. The 9 aa bradykinin peptide elicits many responses including vasodilation; edema; smooth muscle spasm and pain fiber stimulation. This receptor associates with G proteins that stimulate a phosphatidylinositol-calcium second messenger system. Alternate start codons result in two isoforms of the protein.
Synonyms:	B2R; BK-2; BK2; BKR2; BRB2

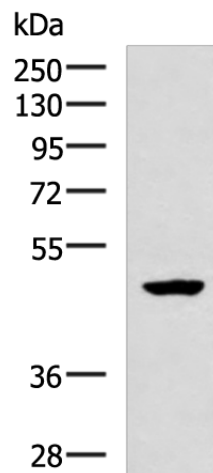


[View online »](#)

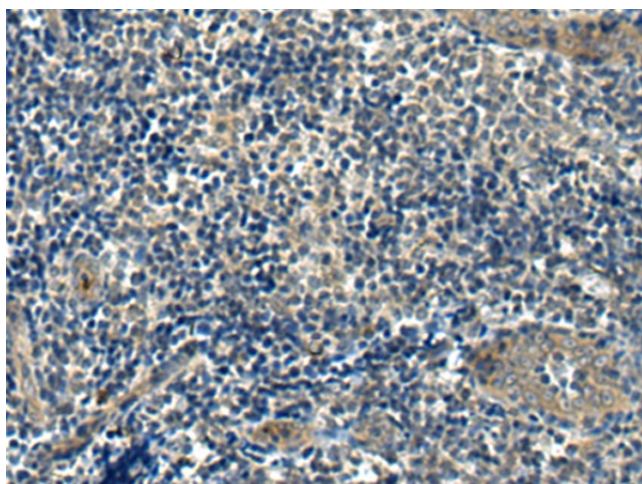
Protein Families: Druggable Genome, GPCR, Transmembrane

Protein Pathways: Calcium signaling pathway, Complement and coagulation cascades, Neuroactive ligand-receptor interaction, Regulation of actin cytoskeleton

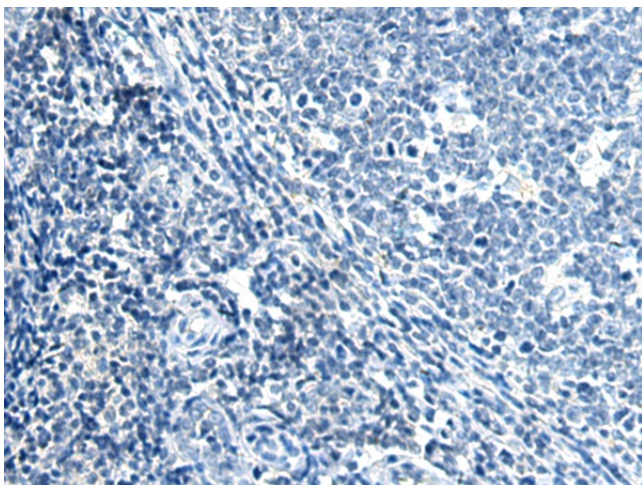
Product images:



Gel: 8%SDS-PAGE
Lysate: 40 µg
Lane: HUVEC cell lysate
Primary antibody: [TA321168] (BDKRB2 Antibody) at dilution 1/650
Secondary antibody: Goat anti rabbit IgG at 1/5000 dilution
Exposure time: 10 minutes



Immunohistochemistry of paraffin-embedded Human tonsil tissue using [TA321168] (BDKRB2 Antibody) at dilution 1/25 (Original magnification: ×200)



Immunohistochemistry of paraffin-embedded Human tonsil tissue using [TA321168] (BDKRB2 Antibody) at dilution 1/25, treated with synthetic peptide. (Original magnification: $\times 200$)