

## Product datasheet for **TA321168**

### **BDKRB2 Rabbit Polyclonal Antibody**

#### **Product data:**

Product Type:	Primary Antibodies
Applications:	IHC, WB
Recommended Dilution:	WB: 500-2000 WB positive control: HUVEC cell lysate IHC: 25-50 Positive control: Human tonsil Predicted cell location: Cytoplasm
Reactivity:	Human, Mouse, Rat
Host:	Rabbit
Isotype:	IgG
Clonality:	Polyclonal
Immunogen:	Synthetic peptide corresponding to a region derived from 377-391 amino acids of human bradykinin receptor B2
Formulation:	PBS pH7.3, 0.05% NaN <sub>3</sub> , 50% glycerol
Concentration:	lot specific
Purification:	Antigen affinity purification
Conjugation:	Unconjugated
Storage:	Store at -20°C as received.
Stability:	Stable for 12 months from date of receipt.
Predicted Protein Size:	45 kDa
Gene Name:	bradykinin receptor B2
Database Link:	<a href="#">NP_000614</a> <a href="#">Entrez Gene 12062 Mouse</a> <a href="#">Entrez Gene 25245 Rat</a> <a href="#">Entrez Gene 624 Human</a> <a href="#">P30411</a>
Background:	This gene encodes a receptor for bradykinin. The 9 aa bradykinin peptide elicits many responses including vasodilation; edema; smooth muscle spasm and pain fiber stimulation. This receptor associates with G proteins that stimulate a phosphatidylinositol-calcium second messenger system. Alternate start codons result in two isoforms of the protein.



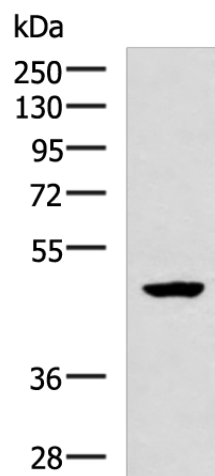
[View online »](#)

**Synonyms:** B2R; BK-2; BK2; BKR2; BRB2

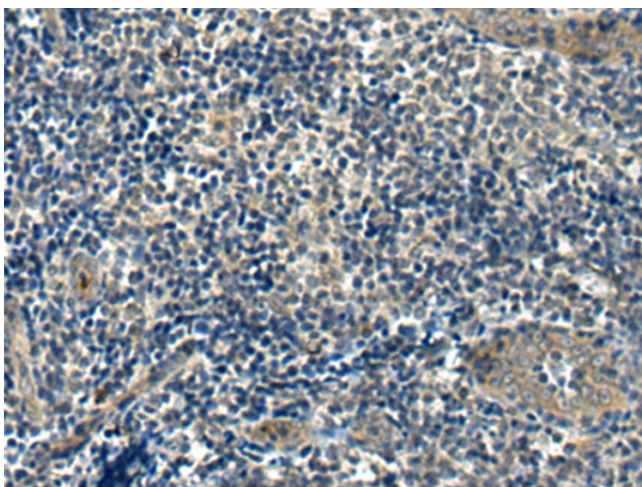
**Protein Families:** Druggable Genome, GPCR, Transmembrane

**Protein Pathways:** Calcium signaling pathway, Complement and coagulation cascades, Neuroactive ligand-receptor interaction, Regulation of actin cytoskeleton

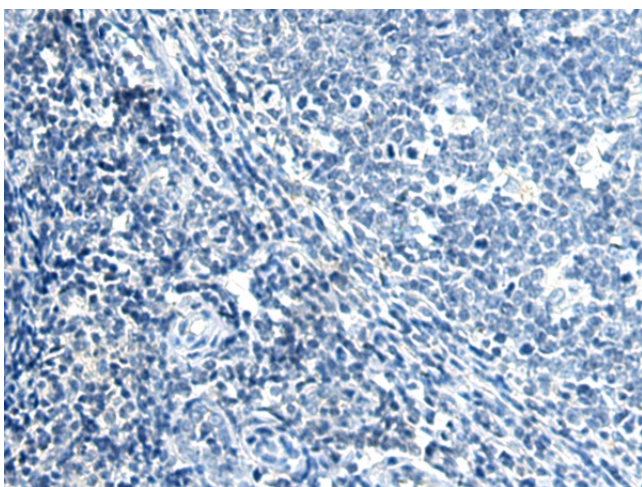
### Product images:



Gel: 8%SDS-PAGE  
Lysate: 40 µg  
Lane: HUVEC cell lysate  
Primary antibody: TA321168 (BDKRB2 Antibody) at dilution 1/650  
Secondary antibody: Goat anti rabbit IgG at 1/5000 dilution  
Exposure time: 10 minutes



Immunohistochemistry of paraffin-embedded Human tonsil tissue using TA321168 (BDKRB2 Antibody) at dilution 1/25 (Original magnification: ×200)



Immunohistochemistry of paraffin-embedded Human tonsil tissue using TA321168 (BDKRB2 Antibody) at dilution 1/25, treated with synthetic peptide. (Original magnification: ×200)