

Product datasheet for **TA321166**

Alpha 1 Acid Glycoprotein (ORM1) Rabbit Polyclonal Antibody

Product data:

Product Type:	Primary Antibodies
Applications:	IHC, WB
Recommended Dilution:	WB: 200-1000 WB positive control: Human testis and prostate tissue IHC: 15-50 Positive control: Human lung cancer Predicted cell location: Cytoplasm
Reactivity:	Human
Host:	Rabbit
Isotype:	IgG
Clonality:	Polyclonal
Immunogen:	Fusion protein corresponding to a region derived from 19-201 amino acids of human orosomuroid 1
Formulation:	PBS pH7.3, 0.05% NaN ₃ , 50% glycerol
Concentration:	lot specific
Purification:	Antigen affinity purification
Conjugation:	Unconjugated
Storage:	Store at -20°C as received.
Stability:	Stable for 12 months from date of receipt.
Predicted Protein Size:	24 kDa
Gene Name:	orosomuroid 1
Database Link:	NP_000598 Entrez Gene 5004 Human P02763
Background:	This gene encodes a key acute phase plasma protein. Because of its increase due to acute inflammation, this protein is classified as an acute-phase reactant. The specific function of this protein has not yet been determined; however, it may be involved in aspects of immunosuppression.

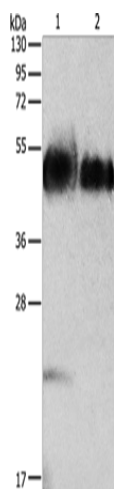


[View online »](#)

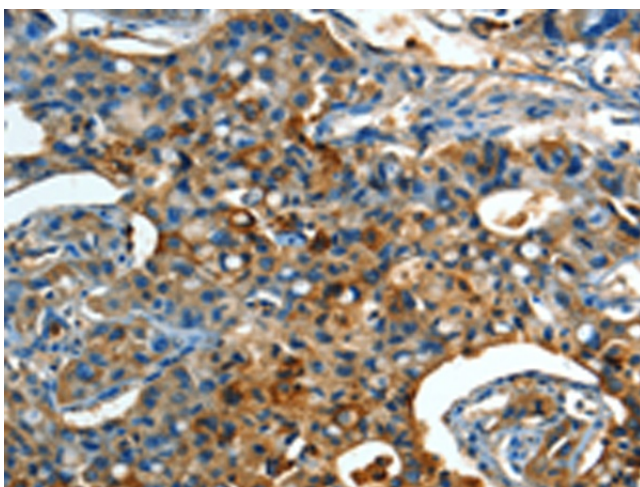
Synonyms: AGP-A; AGP1; HEL-S-153w; ORM

Protein Families: Druggable Genome, Secreted Protein

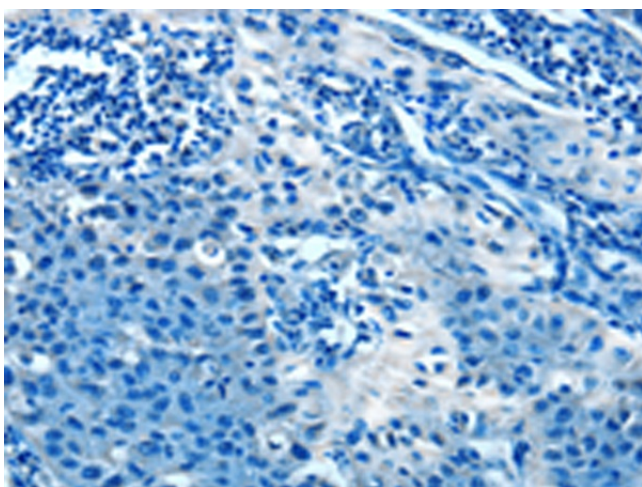
Product images:



Gel: 12%SDS-PAGE
Lysate: 40 μ g
Lane 1-2: Human testis tissue
Human prostate tissue
Primary antibody: TA321166 (ORM1 Antibody) at dilution 1/160
Secondary antibody: Goat anti rabbit IgG at 1/8000 dilution
Exposure time: 2 minutes



Immunohistochemistry of paraffin-embedded Human lung cancer tissue using TA321166 (ORM1 Antibody) at dilution 1/15 (Original magnification: \times 200)



Immunohistochemistry of paraffin-embedded Human lung cancer tissue using TA321166 (ORM1 Antibody) at dilution 1/15, treated with fusion protein. (Original magnification: ×200)