

Product datasheet for **TA321164**

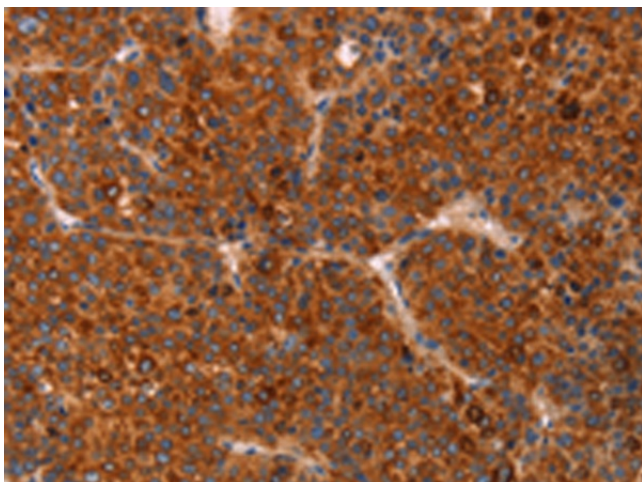
Vitamin D Binding protein (GC) Rabbit Polyclonal Antibody

Product data:

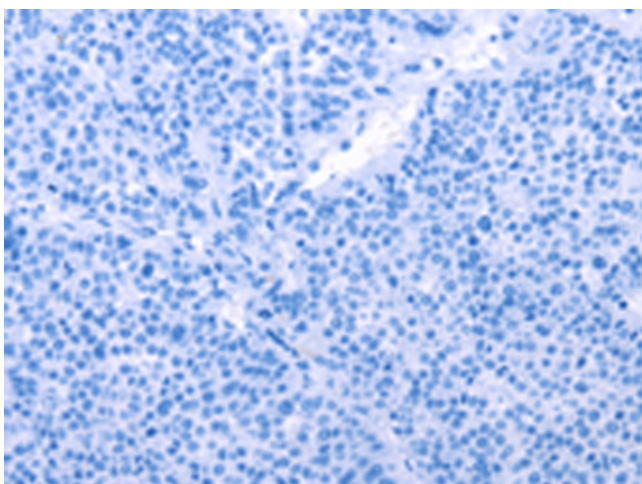
Product Type:	Primary Antibodies
Applications:	IHC
Recommended Dilution:	IHC: 50-200 Positive control: Human liver cancer Predicted cell location: Cytoplasm
Reactivity:	Human
Host:	Rabbit
Isotype:	IgG
Clonality:	Polyclonal
Immunogen:	Fusion protein corresponding to a region derived from 217-474 amino acids of human group-specific component (vitamin D binding protein)
Formulation:	PBS pH7.3, 0.05% NaN ₃ , 50% glycerol
Concentration:	lot specific
Purification:	Antigen affinity purification
Conjugation:	Unconjugated
Storage:	Store at -20°C as received.
Stability:	Stable for 12 months from date of receipt.
Gene Name:	GC, vitamin D binding protein
Database Link:	NP_000574 Entrez Gene 2638 Human P02774
Background:	The protein encoded by this gene belongs to the albumin gene family. It is a multifunctional protein found in plasma; ascitic fluid; cerebrospinal fluid and on the surface of many cell types. It binds to vitamin D and its plasma metabolites and transports them to target tissues. Alternatively spliced transcript variants encoding different isoforms have been found for this gene.
Synonyms:	DBP; GC; Gc-MAF; GcMAF; GRD3; HEL-S-51; VDBG; VDBP
Protein Families:	Secreted Protein



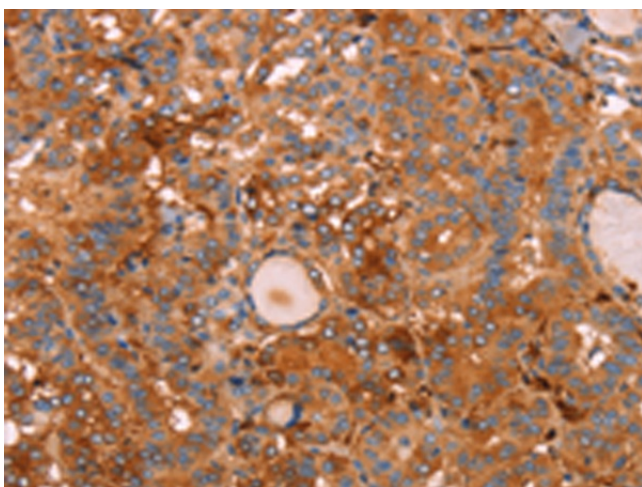
[View online »](#)

Product images:

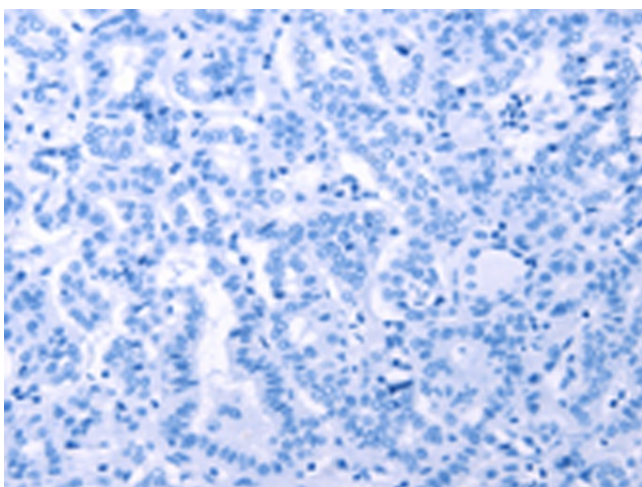
Immunohistochemistry of paraffin-embedded Human liver cancer tissue using TA321164 (GC Antibody) at dilution 1/30 (Original magnification: ×200)



Immunohistochemistry of paraffin-embedded Human liver cancer tissue using TA321164 (GC Antibody) at dilution 1/30, treated with fusion protein. (Original magnification: ×200)



Immunohistochemistry of paraffin-embedded Human thyroid cancer tissue using TA321164 (GC Antibody) at dilution 1/30 (Original magnification: ×200)



Immunohistochemistry of paraffin-embedded Human thyroid cancer tissue using TA321164 (GC Antibody) at dilution 1/30, treated with fusion protein. (Original magnification: ×200)