

Product datasheet for **TA321163S**

Vitamin D Binding protein (GC) Rabbit Polyclonal Antibody

Product data:

Product Type:	Primary Antibodies
Applications:	IHC, WB
Recommended Dilution:	WB: 500-2000 WB positive control: Human fetal liver tissue and A549 cells IHC: 50-200 Positive control: Human liver cancer Predicted cell location: Cytoplasm
Reactivity:	Human
Host:	Rabbit
Isotype:	IgG
Clonality:	Polyclonal
Immunogen:	Fusion protein corresponding to a region derived from 217-474 amino acids of human group-specific component (vitamin D binding protein)
Formulation:	PBS pH7.3, 0.05% NaN ₃ , 50% glycerol
Purification:	Antigen affinity purification
Conjugation:	Unconjugated
Storage:	Store at -20°C as received.
Stability:	Stable for 12 months from date of receipt.
Predicted Protein Size:	53 kDa
Gene Name:	GC, vitamin D binding protein
Database Link:	NP_000574 Entrez Gene 2638 Human P02774
Background:	The protein encoded by this gene belongs to the albumin gene family. It is a multifunctional protein found in plasma; ascitic fluid; cerebrospinal fluid and on the surface of many cell types. It binds to vitamin D and its plasma metabolites and transports them to target tissues. Alternatively spliced transcript variants encoding different isoforms have been found for this gene.

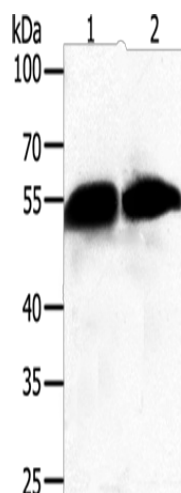


[View online »](#)

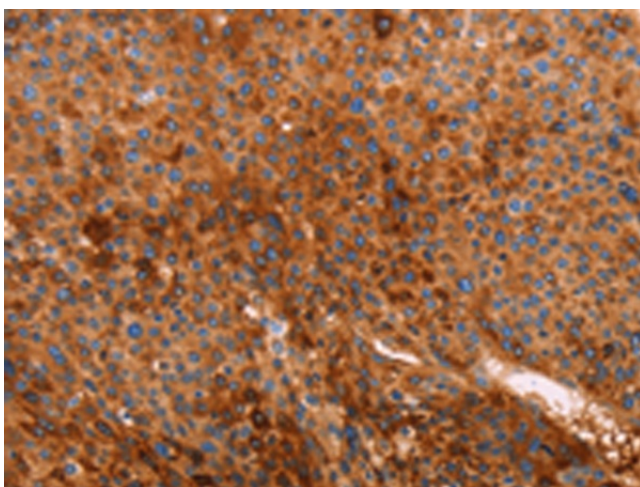
Synonyms: DBP; GC; Gc-MAF; GcMAF; GRD3; HEL-S-51; VDBG; VDBP

Protein Families: Secreted Protein

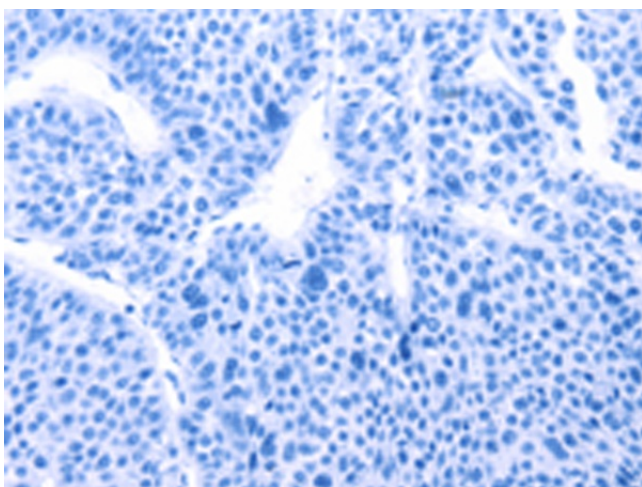
Product images:



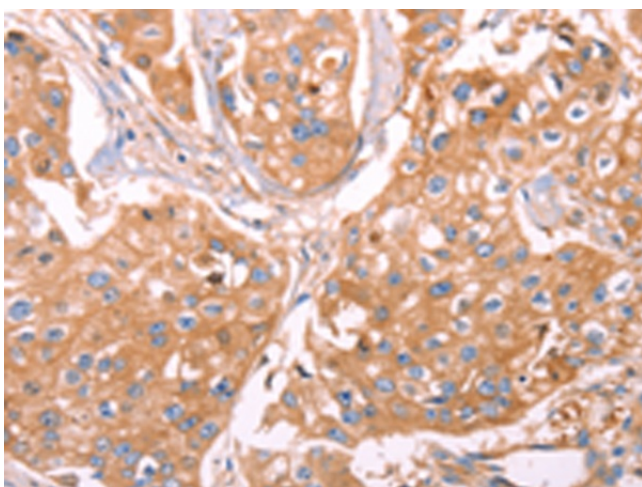
Gel: 10%SDS-PAGE
Lysate: 50 µg
Lane 1-2: Human fetal liver tissue
A549 cells
Primary antibody: [TA321163] (GC Antibody) at dilution 1/500
Secondary antibody: Goat anti rabbit IgG at 1/8000 dilution
Exposure time: 20 seconds



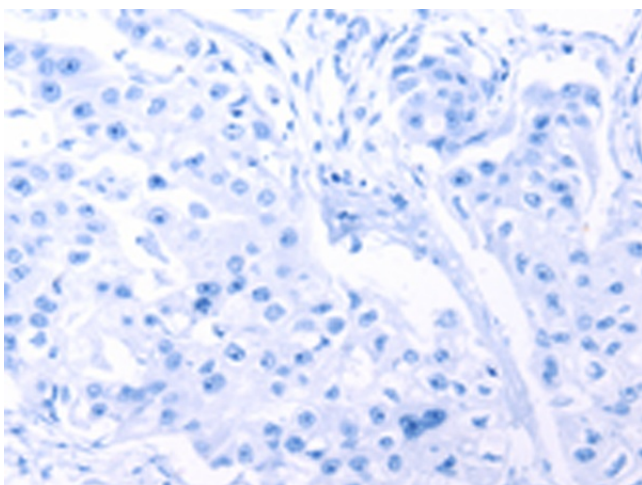
Immunohistochemistry of paraffin-embedded Human liver cancer tissue using [TA321163] (GC Antibody) at dilution 1/40 (Original magnification: ×200)



Immunohistochemistry of paraffin-embedded Human liver cancer tissue using [TA321163] (GC Antibody) at dilution 1/40, treated with fusion protein. (Original magnification: x200)



Immunohistochemistry of paraffin-embedded Human breast cancer tissue using [TA321163] (GC Antibody) at dilution 1/40 (Original magnification: x200)



Immunohistochemistry of paraffin-embedded Human breast cancer tissue using [TA321163] (GC Antibody) at dilution 1/40, treated with fusion protein. (Original magnification: x200)