

Product datasheet for **TA321162**

IL1 beta (IL1B) Rabbit Polyclonal Antibody

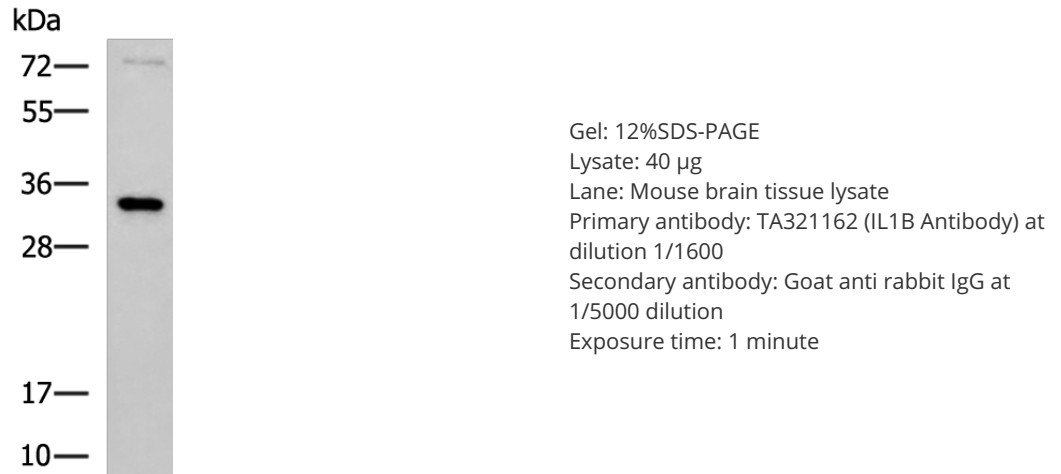
Product data:

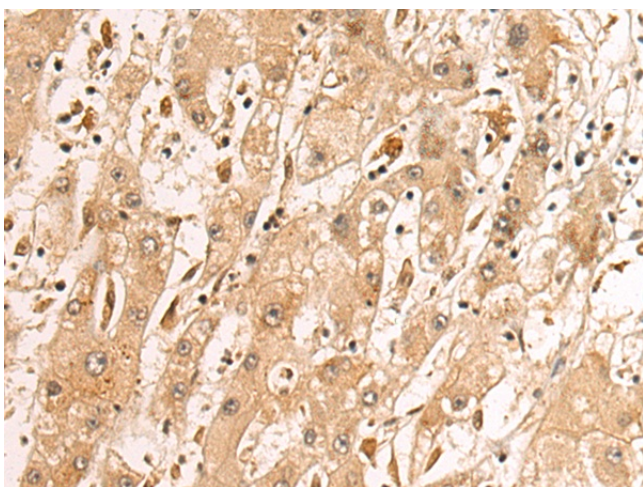
| | |
|-----------------------|---|
| Product Type: | Primary Antibodies |
| Applications: | IHC, WB |
| Recommended Dilution: | WB: 1000-5000 WB positive control: Mouse brain tissue lysate IHC: 200-300 Positive control: Human liver cancer Predicted cell location: Cytoplasm |
| Reactivity: | Human, Mouse |
| Host: | Rabbit |
| Isotype: | IgG |
| Clonality: | Polyclonal |
| Immunogen: | Full length fusion protein |
| Formulation: | PBS pH7.3, 0.05% NaN ₃ , 50% glycerol |
| Concentration: | lot specific |
| Purification: | Antigen affinity purification |
| Conjugation: | Unconjugated |
| Storage: | Store at -20°C as received. |
| Stability: | Stable for 12 months from date of receipt. |
| Gene Name: | interleukin 1 beta |
| Database Link: | NP_000567 Entrez Gene 16176 Mouse Entrez Gene 3553 Human P01584 |



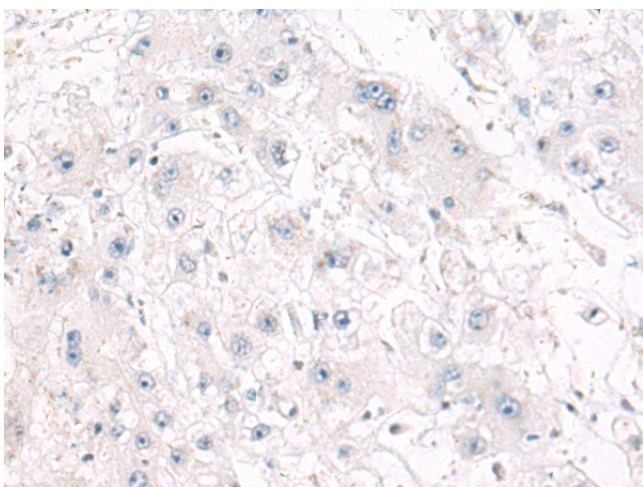
[View online »](#)

| | |
|--------------------------|---|
| Background: | The protein encoded by this gene is a member of the interleukin 1 cytokine family. This cytokine is produced by activated macrophages as a proprotein; which is proteolytically processed to its active form by caspase 1 (CASP1/ICE). This cytokine is an important mediator of the inflammatory response; and is involved in a variety of cellular activities; including cell proliferation; differentiation; and apoptosis. The induction of cyclooxygenase-2 (PTGS2/COX2) by this cytokine in the central nervous system (CNS) is found to contribute to inflammatory pain hypersensitivity. This gene and eight other interleukin 1 family genes form a cytokine gene cluster on chromosome 2. |
| Synonyms: | IL-1; IL1-BETA; IL1F2 |
| Protein Families: | Druggable Genome, Secreted Protein |
| Protein Pathways: | Alzheimer's disease, Apoptosis, Cytokine-cytokine receptor interaction, Cytosolic DNA-sensing pathway, Graft-versus-host disease, Hematopoietic cell lineage, MAPK signaling pathway, NOD-like receptor signaling pathway, Prion diseases, Toll-like receptor signaling pathway, Type I diabetes mellitus |

Product images:



Immunohistochemistry of paraffin-embedded Human liver cancer tissue using TA321162 (IL1B Antibody) at dilution 1/150 (Original magnification: x200)



Immunohistochemistry of paraffin-embedded Human liver cancer tissue using TA321162 (IL1B Antibody) at dilution 1/150, treated with fusion protein. (Original magnification: x200)