

Product datasheet for **TA321151S**

HNF1 alpha (HNF1A) Rabbit Polyclonal Antibody

Product data:

Product Type:	Primary Antibodies
Applications:	IHC, WB
Recommended Dilution:	WB: 200-1000 WB positive control: Hela cell lysate IHC: 30-150 Positive control: Human ovarian cancer Predicted cell location: Nucleus
Reactivity:	Human, Mouse, Rat
Host:	Rabbit
Isotype:	IgG
Clonality:	Polyclonal
Immunogen:	Synthetic peptide corresponding to a region derived from 64-78 amino acids of Human HNF1 homeobox A
Formulation:	PBS pH7.3, 0.05% NaN ₃ , 50% glycerol
Purification:	Antigen affinity purification
Conjugation:	Unconjugated
Storage:	Store at -20°C as received.
Stability:	Stable for 12 months from date of receipt.
Predicted Protein Size:	56 kDa
Gene Name:	HNF1 homeobox A
Database Link:	NP_000536 Entrez Gene 21405 Mouse Entrez Gene 24817 Rat Entrez Gene 6927 Human P20823



[View online »](#)

Background:

HNF1 homeobox A (hepatocyte nuclear factor 1 homeobox A); also known as HNF1A; is a human gene. The protein encoded by this gene is a transcription factor required for the expression of several liver-specific genes. The encoded protein functions as a homodimer and binds to the inverted palindrome 5'-GTTAATNATTAAC-3'. Defects in this gene are a cause of maturity onset diabetes of the young type 3 (MODY3) and also can result in the appearance of hepatic adenomas.

Synonyms:

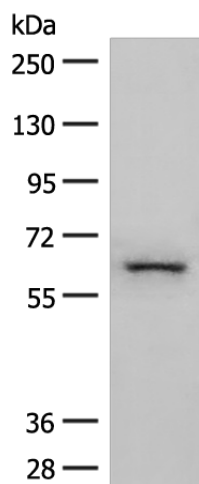
HNF-1A; HNF1; IDDM20; LFB1; MODY3; TCF-1; TCF1

Protein Families:

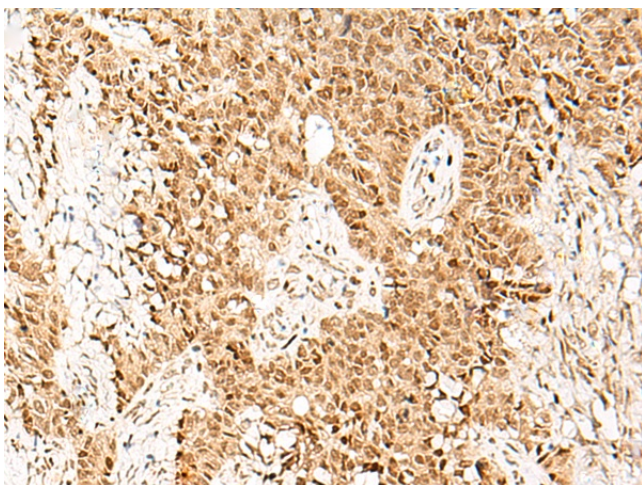
Adult stem cells, Druggable Genome, ES Cell Differentiation/IPS, Transcription Factors

Protein Pathways:

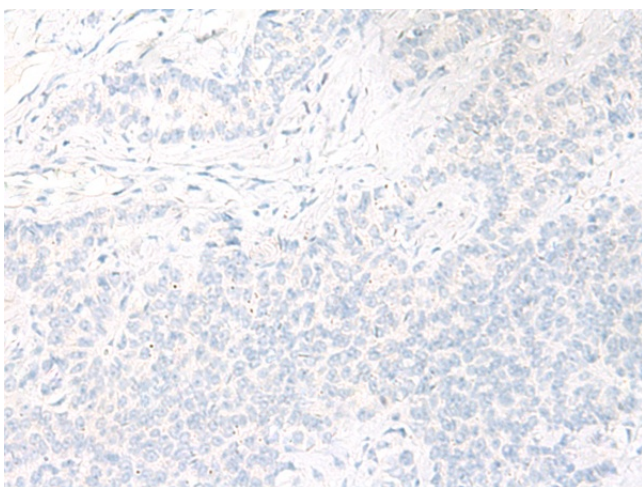
Maturity onset diabetes of the young

Product images:

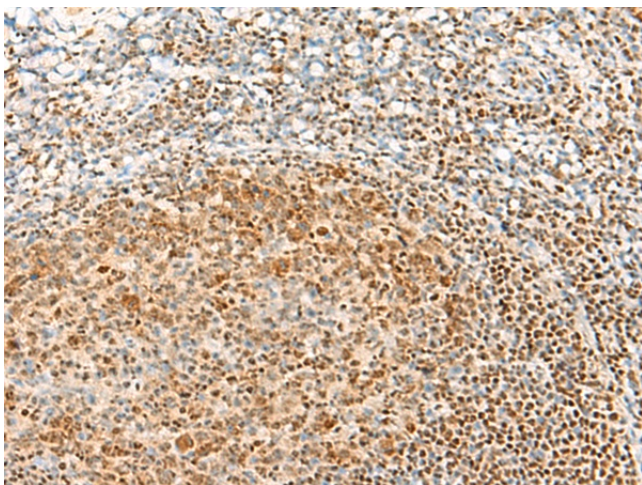
Gel: 6%SDS-PAGE
Lysate: 40 µg
Lane: HeLa cell lysate
Primary antibody: [TA321151] (HNF1A Antibody) at dilution 1/250
Secondary antibody: Goat anti rabbit IgG at 1/8000 dilution
Exposure time: 10 seconds



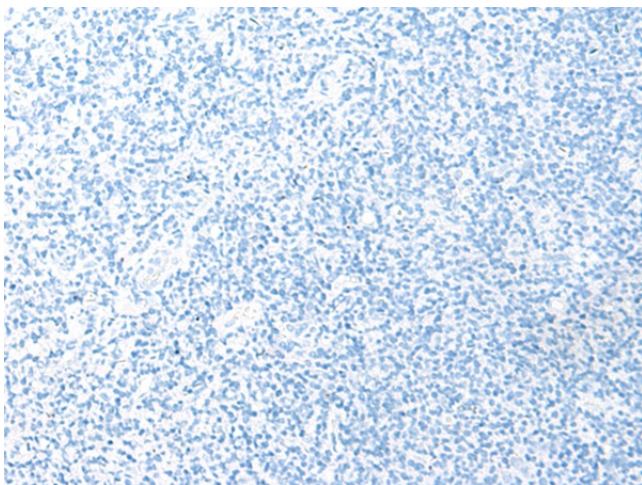
Immunohistochemistry of paraffin-embedded Human ovarian cancer tissue using [TA321151] (HNF1A Antibody) at dilution 1/30 (Original magnification: ×200)



Immunohistochemistry of paraffin-embedded Human ovarian cancer tissue using [TA321151] (HNF1A Antibody) at dilution 1/30, treated with synthetic peptide. (Original magnification: $\times 200$)



Immunohistochemistry of paraffin-embedded Human tonsil tissue using [TA321151] (HNF1A Antibody) at dilution 1/30 (Original magnification: $\times 200$)



Immunohistochemistry of paraffin-embedded Human tonsil tissue using [TA321151] (HNF1A Antibody) at dilution 1/30, treated with synthetic peptide. (Original magnification: $\times 200$)