

## Product datasheet for **TA321150**

### **HNF1 alpha (HNF1A) Rabbit Polyclonal Antibody**

#### **Product data:**

Product Type:	Primary Antibodies
Applications:	IHC, WB
Recommended Dilution:	WB: 500-2000 WB positive control: Human left kidney cancer tissue and HEPG2 cell lysates IHC: 25-100 Positive control: Human esophagus cancer Predicted cell location: Nucleus
Reactivity:	Human, Mouse, Rat
Host:	Rabbit
Isotype:	IgG
Clonality:	Polyclonal
Immunogen:	Synthetic peptide corresponding to a region derived from 64-78 amino acids of Human HNF1 homeobox A
Formulation:	PBS pH7.3, 0.05% NaN <sub>3</sub> , 50% glycerol
Concentration:	lot specific
Purification:	Antigen affinity purification
Conjugation:	Unconjugated
Storage:	Store at -20°C as received.
Stability:	Stable for 12 months from date of receipt.
Predicted Protein Size:	56 kDa
Gene Name:	HNF1 homeobox A
Database Link:	<a href="#">NP_000536</a> <a href="#">Entrez Gene 21405 Mouse</a> <a href="#">Entrez Gene 24817 Rat</a> <a href="#">Entrez Gene 6927 Human</a> <a href="#">P20823</a>



[View online »](#)

**Background:**

HNF1 homeobox A (hepatocyte nuclear factor 1 homeobox A); also known as HNF1A; is a human gene. The protein encoded by this gene is a transcription factor required for the expression of several liver-specific genes. The encoded protein functions as a homodimer and binds to the inverted palindrome 5'-GTTAATNATTAAC-3'. Defects in this gene are a cause of maturity onset diabetes of the young type 3 (MODY3) and also can result in the appearance of hepatic adenomas.

**Synonyms:**

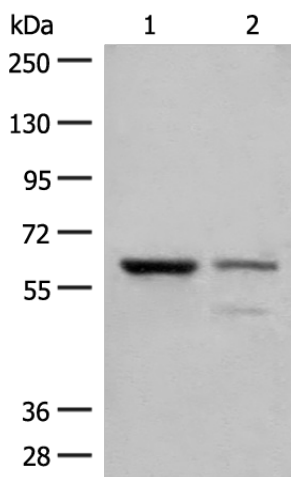
HNF-1A; HNF1; IDDM20; LFB1; MODY3; TCF-1; TCF1

**Protein Families:**

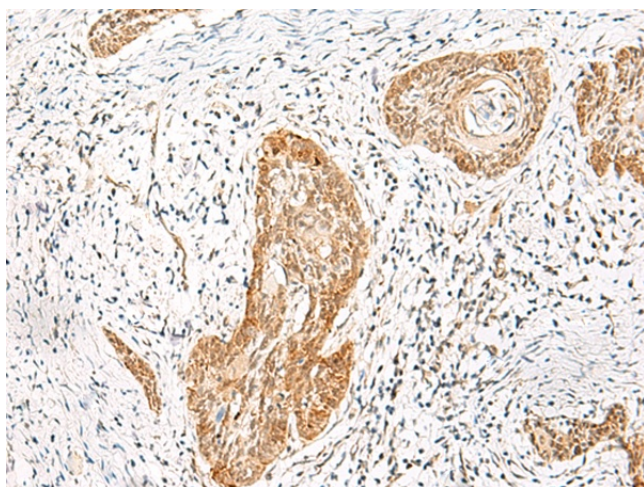
Adult stem cells, Druggable Genome, ES Cell Differentiation/IPS, Transcription Factors

**Protein Pathways:**

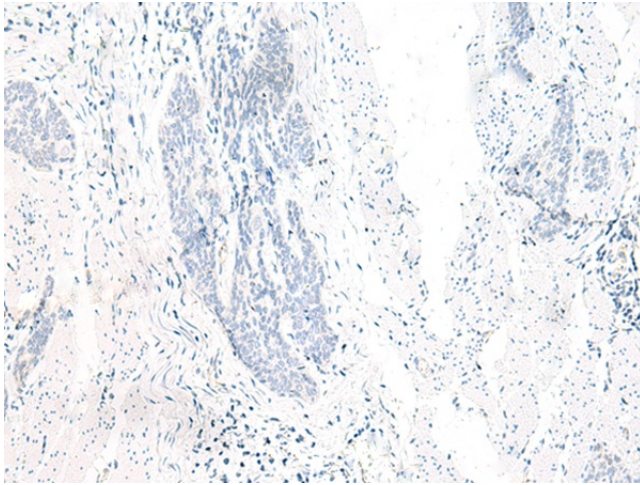
Maturity onset diabetes of the young

**Product images:**


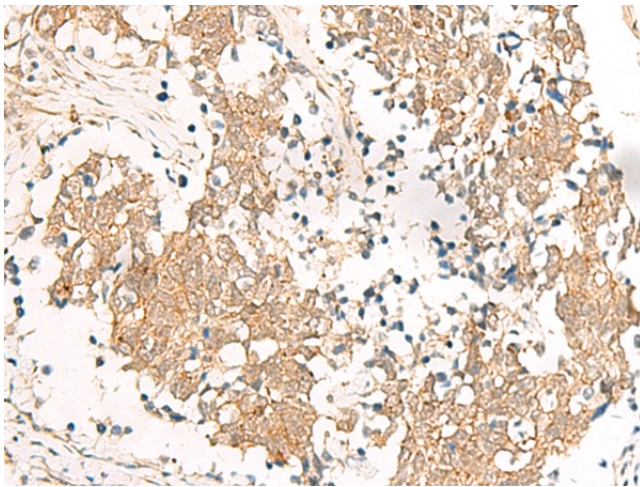
Gel: 6%SDS-PAGE  
 Lysate: 40 µg  
 Lane 1-2: Human left kidney cancer tissue and HEPG2 cell lysates  
 Primary antibody: TA321150 (HNF1A Antibody) at dilution 1/200  
 Secondary antibody: Goat anti rabbit IgG at 1/8000 dilution  
 Exposure time: 10 seconds



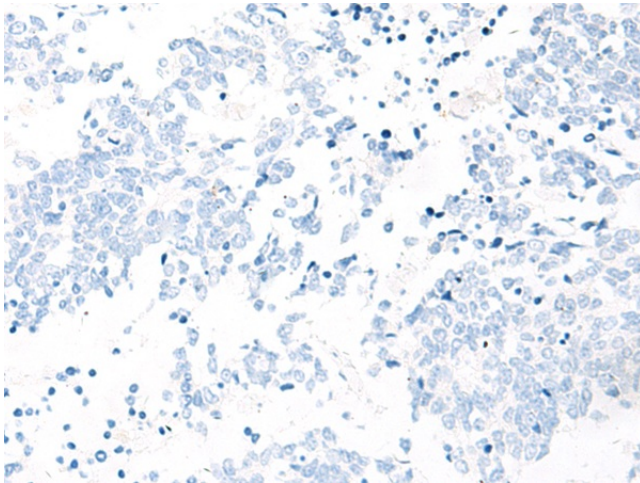
Immunohistochemistry of paraffin-embedded Human esophagus cancer tissue using TA321150 (HNF1A Antibody) at dilution 1/25 (Original magnification: ×200)



Immunohistochemistry of paraffin-embedded Human esophagus cancer tissue using TA321150 (HNF1A Antibody) at dilution 1/25, treated with synthetic peptide. (Original magnification: ×200)



Immunohistochemistry of paraffin-embedded Human lung cancer tissue using TA321150 (HNF1A Antibody) at dilution 1/25 (Original magnification: ×200)



Immunohistochemistry of paraffin-embedded Human lung cancer tissue using TA321150 (HNF1A Antibody) at dilution 1/25, treated with synthetic peptide. (Original magnification: ×200)