

## Product datasheet for **TA321147**

### MC2 receptor (MC2R) Rabbit Polyclonal Antibody

#### Product data:

Product Type:	Primary Antibodies
Applications:	WB
Recommended Dilution:	WB: 1000-5000 WB positive control: Human fetal kidney tissue
Reactivity:	Human, Mouse
Host:	Rabbit
Isotype:	IgG
Clonality:	Polyclonal
Immunogen:	Synthetic peptide corresponding to a region derived from 7-21 amino acids of Human melanocortin 2 receptor (adrenocorticotrophic hormone)
Formulation:	PBS pH7.3, 0.05% NaN <sub>3</sub> , 50% glycerol
Concentration:	lot specific
Purification:	Antigen affinity purification
Conjugation:	Unconjugated
Storage:	Store at -20°C as received.
Stability:	Stable for 12 months from date of receipt.
Predicted Protein Size:	34 kDa
Gene Name:	melanocortin 2 receptor
Database Link:	<a href="#">NP_000520</a> <a href="#">Entrez Gene 17200 Mouse</a> <a href="#">Entrez Gene 4158 Human</a> <a href="#">Q01718</a>
Background:	MC2R encodes one member of the five-member G-protein associated melanocortin receptor family. Melanocortins (melanocyte-stimulating hormones and adrenocorticotrophic hormone) are peptides derived from pro-opiomelanocortin (POMC). MC2R is selectively activated by adrenocorticotrophic hormone; whereas the other four melanocortin receptors recognize a variety of melanocortin ligands. Mutations in MC2R can result in familial glucocorticoid deficiency.
Synonyms:	ACTHR

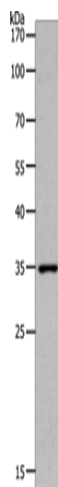


[View online »](#)

Protein Families: Druggable Genome, GPCR, Transmembrane

Protein Pathways: Neuroactive ligand-receptor interaction

### Product images:



Gel: 10%SDS-PAGE

Lysate: 40  $\mu$ g

Lane: Human fetal kidney tissue

Primary antibody: TA321147 (MC2R Antibody) at dilution 1/1400

Secondary antibody: Goat anti rabbit IgG at 1/8000 dilution

Exposure time: 2 minutes