

Product datasheet for **TA321143**

Adenylate Kinase 1 (AK1) Rabbit Polyclonal Antibody

Product data:

Product Type:	Primary Antibodies
Applications:	IHC, WB
Recommended Dilution:	WB: 500-1000 WB positive control: HT-29 cells IHC: 25-100 Positive control: Human thyroid cancer Predicted cell location: Cytoplasm
Reactivity:	Human, Mouse, Rat
Host:	Rabbit
Isotype:	IgG
Clonality:	Polyclonal
Immunogen:	Fusion protein corresponding to a region derived from 1-194 amino acids of Human Adenylate kinase isoenzyme 1
Formulation:	PBS pH7.3, 0.05% NaN ₃ , 50% glycerol
Concentration:	lot specific
Purification:	Antigen affinity purification
Conjugation:	Unconjugated
Storage:	Store at -20°C as received.
Stability:	Stable for 12 months from date of receipt.
Predicted Protein Size:	22 kDa
Gene Name:	adenylate kinase 1
Database Link:	NP_000467 Entrez Gene 11636 Mouse Entrez Gene 24183 Rat Entrez Gene 203 Human P00568



[View online »](#)

Background:

Adenylate kinase is an enzyme involved in regulating the adenine nucleotide composition within a cell by catalyzing the reversible transfer of phosphate group among adinine nucleotides. Three isozymes of adenylate kinase have been identified in vertebrates; adenylate isozyme 1 (AK1); 2 (AK2) and 3 (AK3). AK1 is found in the cytosol of skeletal muscle; brain and erythrocytes; whereas AK2 and AK3 are found in the mitochondria of other tissues including liver and heart. AK1 was identified because of its association with a rare genetic disorder causing nonspherocytic hemolytic anemia where a mutation in the AK1 gene was found to reduce the catalytic activity of the enzyme.

Synonyms:

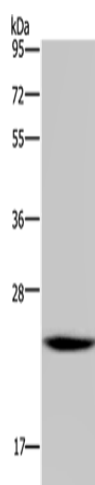
HTL-S-58j

Protein Families:

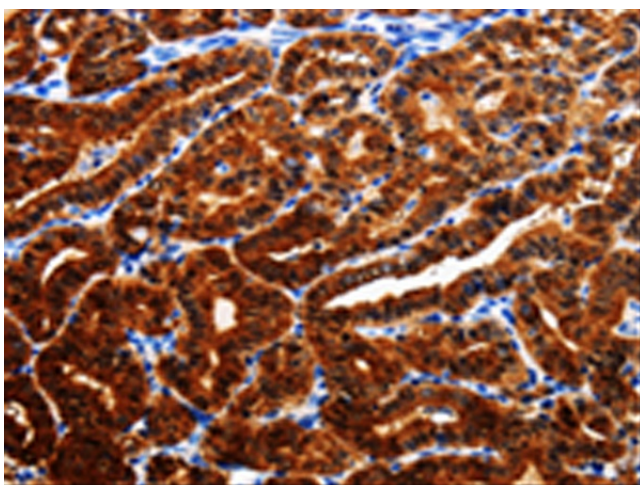
Druggable Genome

Protein Pathways:

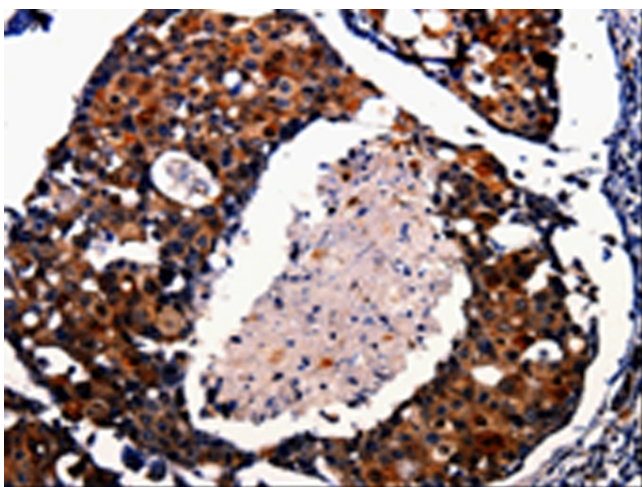
Metabolic pathways, Purine metabolism

Product images:

Gel: 10%SDS-PAGE
Lysate: 30 µg
Lane: HT29 cells
Primary antibody: TA321143 (AK1 Antibody) at dilution 1/400
Secondary antibody: Goat anti rabbit IgG at 1/8000 dilution
Exposure time: 2min



Immunohistochemistry of paraffin-embedded Human thyroid cancer tissue using TA321143 (AK1 Antibody) at dilution 1/25. (Original magnification: ×200)



Immunohistochemistry of paraffin-embedded Human breast cancer tissue using TA321143 (AK1 Antibody) at dilution 1/25. (Original magnification: x200)