

## Product datasheet for **TA321142**

### CYP1A1 Rabbit Polyclonal Antibody

#### Product data:

Product Type:	Primary Antibodies
Applications:	IHC, WB
Recommended Dilution:	WB: 500-2000 WB positive control: Mouse liver tissue IHC: 25-100 Positive control: Human liver cancer Predicted cell location: Cytoplasm
Reactivity:	Human, Mouse, Rat
Host:	Rabbit
Isotype:	IgG
Clonality:	Polyclonal
Immunogen:	Fusion protein corresponding to C terminal 300 amino acids of human cytochrome P450, family 1, subfamily A, polypeptide 1
Formulation:	PBS pH7.3, 0.05% NaN <sub>3</sub> , 50% glycerol
Concentration:	lot specific
Purification:	Antigen affinity purification
Conjugation:	Unconjugated
Storage:	Store at -20°C as received.
Stability:	Stable for 12 months from date of receipt.
Predicted Protein Size:	58 kDa
Gene Name:	cytochrome P450 family 1 subfamily A member 1
Database Link:	<a href="#">NP_000490</a> <a href="#">Entrez Gene 13076 Mouse</a> <a href="#">Entrez Gene 24296 Rat</a> <a href="#">Entrez Gene 1543 Human</a> <a href="#">P04798</a>



[View online »](#)

**Background:**

This gene; CYP1A1; encodes a member of the cytochrome P450 superfamily of enzymes. The cytochrome P450 proteins are monooxygenases which catalyze many reactions involved in drug metabolism and synthesis of cholesterol; steroids and other lipids. This protein localizes to the endoplasmic reticulum and its expression is induced by some polycyclic aromatic hydrocarbons (PAHs); some of which are found in cigarette smoke. The enzyme's endogenous substrate is unknown; however; it is able to metabolize some PAHs to carcinogenic intermediates. The gene has been associated with lung cancer risk. A related family member; CYP1A2; is located approximately 25 kb away from CYP1A1 on chromosome 15.

**Synonyms:**

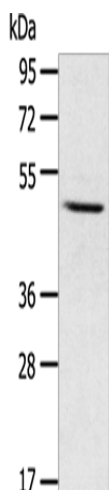
AHH; AHRR; CP11; CYP1; CYP1A1; P1-450; P450-C; P450DX

**Protein Families:**

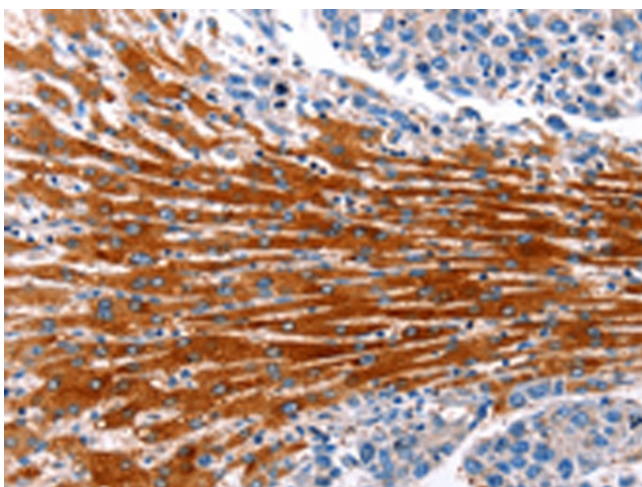
Druggable Genome, P450, Transmembrane

**Protein Pathways:**

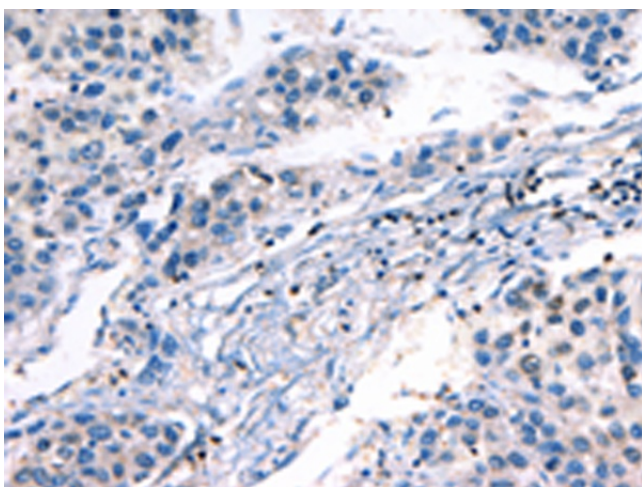
Metabolism of xenobiotics by cytochrome P450, Retinol metabolism, Tryptophan metabolism

**Product images:**

Gel: 10%SDS-PAGE  
Lysate: 30 µg  
Lane: Mouse liver tissue  
Primary antibody: TA321142 (CYP1A1 Antibody) at dilution 1/400  
Secondary antibody: Goat anti rabbit IgG at 1/8000 dilution  
Exposure time: 5 seconds



Immunohistochemistry of paraffin-embedded Human liver cancer tissue using TA321142 (CYP1A1 Antibody) at dilution 1/25 (Original magnification:  $\times 200$ )



Immunohistochemistry of paraffin-embedded Human liver cancer tissue using TA321142 (CYP1A1 Antibody) at dilution 1/25, treated with fusion protein. (Original magnification:  $\times 200$ )