

Product datasheet for **TA321139**

Antithrombin III (SERPINC1) Rabbit Polyclonal Antibody

Product data:

Product Type:	Primary Antibodies
Applications:	IHC
Recommended Dilution:	IHC: 25-100 Positive control: Human thyroid cancer Predicted cell location: Cytoplasm, Nucleus
Reactivity:	Human
Host:	Rabbit
Isotype:	IgG
Clonality:	Polyclonal
Immunogen:	Fusion protein corresponding to a region derived from 15-259 amino acids of human serpin peptidase inhibitor, clade C (antithrombin), member 1
Formulation:	PBS pH7.3, 0.05% NaN ₃ , 50% glycerol
Concentration:	lot specific
Purification:	Antigen affinity purification
Conjugation:	Unconjugated
Storage:	Store at -20°C as received.
Stability:	Stable for 12 months from date of receipt.
Gene Name:	serpin family C member 1
Database Link:	NP_000479 Entrez Gene 462 Human P01008
Background:	The protein encoded by this gene is a plasma protease inhibitor and a member of the serpin superfamily. This protein inhibits thrombin as well as other activated serine proteases of the coagulation system; and it regulates the blood coagulation cascade. The protein includes two functional domains: the heparin binding-domain at the N-terminus of the mature protein; and the reactive site domain at the C-terminus. The inhibitory activity is enhanced by the presence of heparin. More than 120 mutations have been identified for this gene; many of which are known to cause antithrombin-III deficiency.



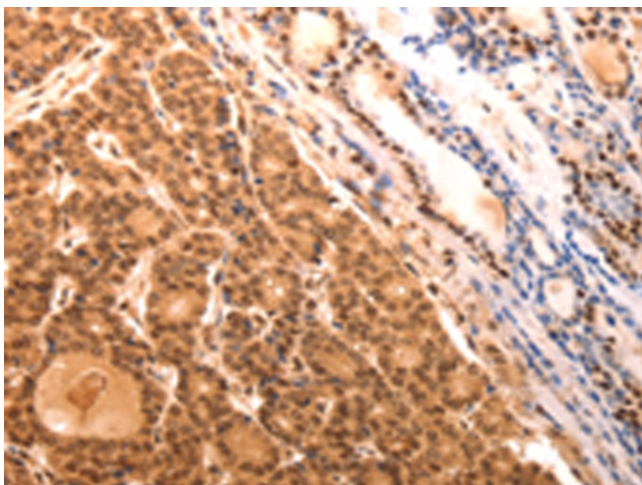
[View online »](#)

Synonyms: AT3; AT3D; ATIII; THPH7

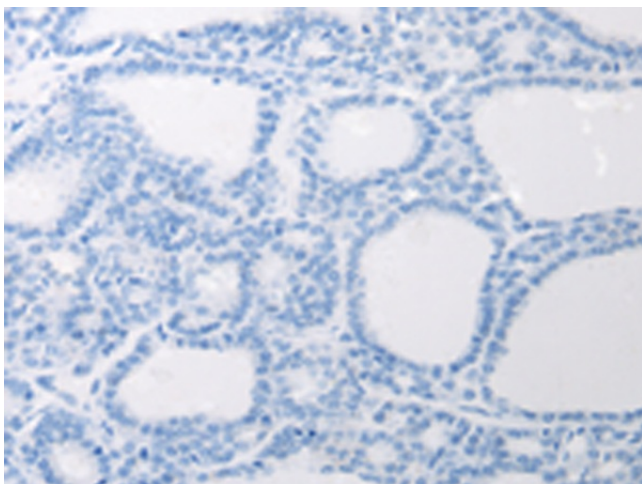
Protein Families: Druggable Genome, Secreted Protein

Protein Pathways: Complement and coagulation cascades

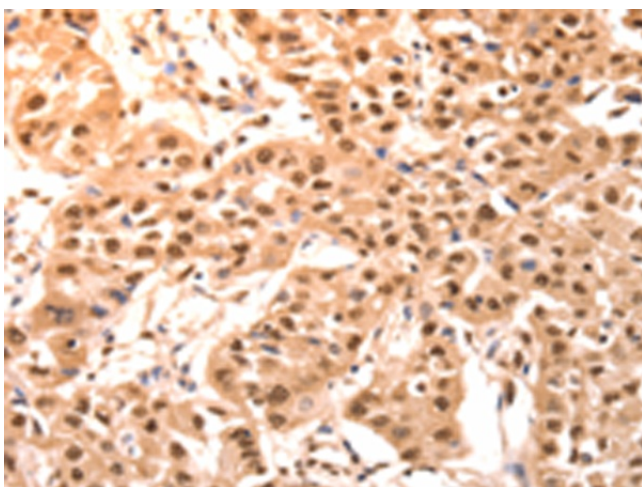
Product images:



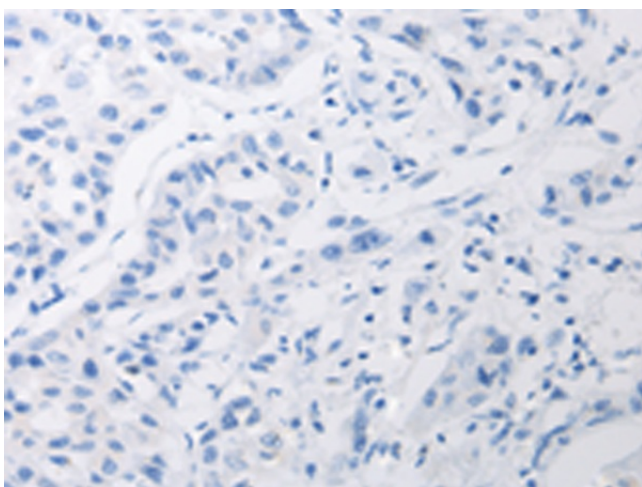
Immunohistochemistry of paraffin-embedded Human thyroid cancer tissue using TA321139 (SERPINC1 Antibody) at dilution 1/15 (Original magnification: $\times 200$)



Immunohistochemistry of paraffin-embedded Human thyroid cancer tissue using TA321139 (SERPINC1 Antibody) at dilution 1/15, treated with fusion protein. (Original magnification: $\times 200$)



Immunohistochemistry of paraffin-embedded Human lung cancer tissue using TA321139 (SERPINC1 Antibody) at dilution 1/15 (Original magnification: $\times 200$)



Immunohistochemistry of paraffin-embedded Human lung cancer tissue using TA321139 (SERPINC1 Antibody) at dilution 1/15, treated with fusion protein. (Original magnification: $\times 200$)