

## Product datasheet for **TA321135**

### **HNF1 beta (HNF1B) Rabbit Polyclonal Antibody**

#### **Product data:**

Product Type:	Primary Antibodies
Applications:	IHC
Recommended Dilution:	IHC: 100-300 Positive control: Human colon cancer Predicted cell location: Nucleus
Reactivity:	Human, Mouse, Rat
Host:	Rabbit
Isotype:	IgG
Clonality:	Polyclonal
Immunogen:	Synthetic peptide corresponding to a region derived from 36-50 amino acids of human HNF1 homeobox B
Formulation:	PBS pH7.3, 0.05% NaN <sub>3</sub> , 50% glycerol
Concentration:	lot specific
Purification:	Antigen affinity purification
Conjugation:	Unconjugated
Storage:	Store at -20°C as received.
Stability:	Stable for 12 months from date of receipt.
Gene Name:	HNF1 homeobox B
Database Link:	<a href="#">NP_000449</a> <a href="#">Entrez Gene 21410 Mouse</a> <a href="#">Entrez Gene 25640 Rat</a> <a href="#">Entrez Gene 6928 Human</a> <a href="#">P35680</a>

**Background:** This gene encodes a member of the homeodomain-containing superfamily of transcription factors. The protein binds to DNA as either a homodimer; or a heterodimer with the related protein hepatocyte nuclear factor 1-alpha. The gene has been shown to function in nephron development; and regulates development of the embryonic pancreas. Mutations in this gene result in renal cysts and diabetes syndrome and noninsulin-dependent diabetes mellitus; and expression of this gene is altered in some types of cancer. Multiple transcript variants encoding different isoforms have been found for this gene.



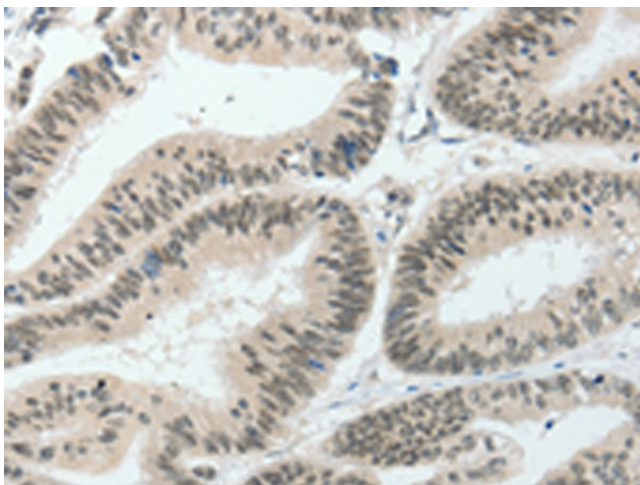
[View online »](#)

**Synonyms:** FJHN; HNF-1-beta; HNF-1B; HNF1beta; HNF2; HPC11; LF-B3; LFB3; MODY5; TCF-2; TCF2; VHNF1

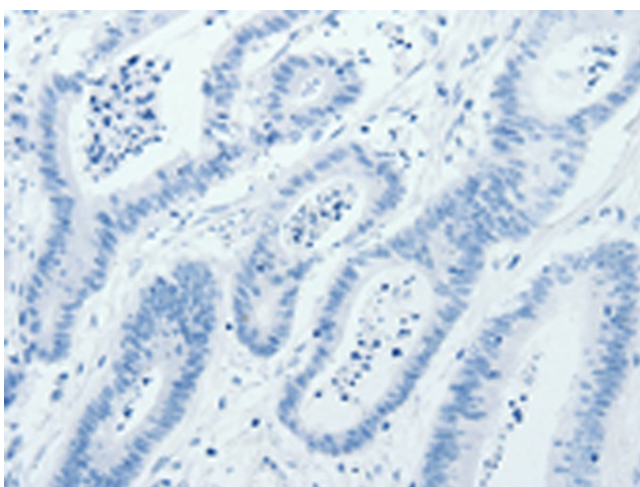
**Protein Families:** Druggable Genome, Embryonic stem cells, ES Cell Differentiation/IPS, Transcription Factors

**Protein Pathways:** Maturity onset diabetes of the young

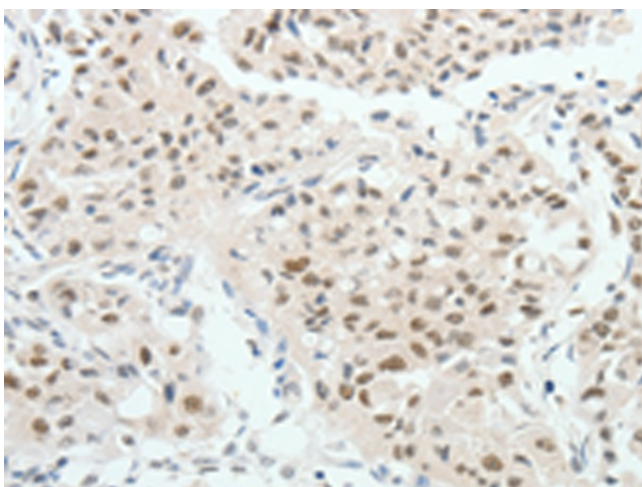
**Product images:**



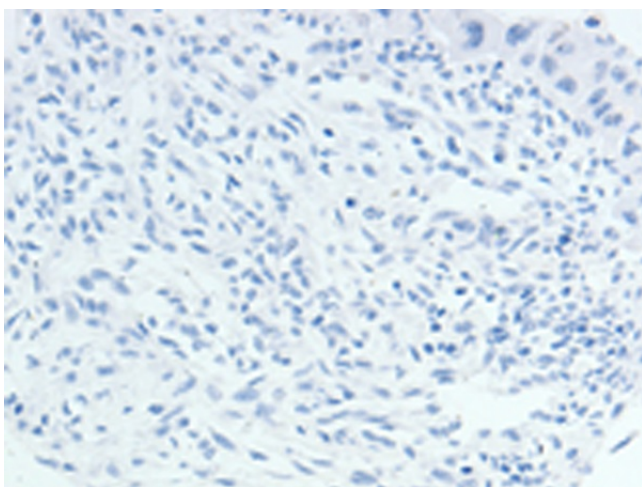
Immunohistochemistry of paraffin-embedded Human colon cancer tissue using TA321135 (HNF1B Antibody) at dilution 1/80 (Original magnification:  $\times 200$ )



Immunohistochemistry of paraffin-embedded Human colon cancer tissue using TA321135 (HNF1B Antibody) at dilution 1/80, treated with synthetic peptide. (Original magnification:  $\times 200$ )



Immunohistochemistry of paraffin-embedded Human lung cancer tissue using TA321135 (HNF1B Antibody) at dilution 1/80 (Original magnification:  $\times 200$ )



Immunohistochemistry of paraffin-embedded Human lung cancer tissue using TA321135 (HNF1B Antibody) at dilution 1/80, treated with synthetic peptide. (Original magnification:  $\times 200$ )