

Product datasheet for **TA321134**

HNF 4 alpha (HNF4A) Rabbit Polyclonal Antibody

Product data:

Product Type:	Primary Antibodies
Applications:	WB
Recommended Dilution:	WB: 1:500-2000
Reactivity:	Human, Mouse, Rat
Host:	Rabbit
Isotype:	IgG
Clonality:	Polyclonal
Immunogen:	Synthetic peptide corresponding to a region derived from 241-254 amino acids of human hepatocyte nuclear factor 4, alpha
Formulation:	PBS pH7.3, 0.05% NaN ₃ , 50% glycerol
Concentration:	lot specific
Purification:	Antigen affinity purification
Conjugation:	Unconjugated
Storage:	Store at -20°C as received.
Stability:	Stable for 12 months from date of receipt.
Predicted Protein Size:	52 kDa
Gene Name:	hepatocyte nuclear factor 4 alpha
Database Link:	NP_000448 Entrez Gene 15378 Mouse Entrez Gene 25735 Rat Entrez Gene 3172 Human P41235
Background:	Hepatocyte nuclear factor 4a (HNF4a) is a transcription factor that belongs to the steroid hormone receptor superfamily and is enriched in liver. HNF4a, in association with PGC-1a, activates gluconeogenic genes such as phosphoenolpyruvate carboxykinase and glucose-6-phosphatase genes in fasted livers. Conditional knockout of the HNF4a gene in the mouse liver destroys lipid homeostasis and leads to lipid accumulation in the liver and a reduction of serum cholesterol and triglyceride levels. Mutations in HNF4a have been linked to maturity-onset diabetes of the young (MODY).



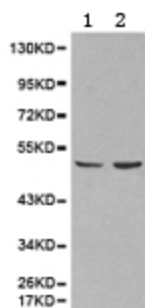
[View online »](#)

Synonyms: FRTS4; HNF4; HNF4a7; HNF4a8; HNF4a9; HNF4alpha; MODY; MODY1; NR2A1; NR2A21; TCF; TCF14

Protein Families: Druggable Genome, ES Cell Differentiation/IPS, Nuclear Hormone Receptor, Transcription Factors

Protein Pathways: Maturity onset diabetes of the young

Product images:



Predicted band size: 52 kDa. Positive control: Mouse liver and Kidney tissue lysate. Recommended dilution: 1/500-2000. (Gel: 10%SDS-PAGE Lane 1: Mouse liver tissue lysate Lane 2: Mouse Kidney tissue lysate Lysates: 40 ug per lane Primary antibody: 1/500 dilution Secondary antibody: Goat anti Rabbit IgG - H&L (HRP) at 1/10000 dilution Exposure time: 1 minute)