

Product datasheet for **TA321133**

Superoxide Dismutase 1 (SOD1) Rabbit Polyclonal Antibody

Product data:

Product Type:	Primary Antibodies
Applications:	WB
Recommended Dilution:	ELISA: 1:2000-10000, WB: 1:1000-5000
Reactivity:	Human, Mouse, Rat
Host:	Rabbit
Isotype:	IgG
Clonality:	Polyclonal
Immunogen:	Fusion protein corresponding to a region derived from 2-159 amino acids of human superoxide dismutase 1, soluble
Formulation:	PBS pH7.3, 0.05% NaN ₃ , 50% glycerol
Concentration:	lot specific
Purification:	Antigen affinity purification
Conjugation:	Unconjugated
Storage:	Store at -20°C as received.
Stability:	Stable for 12 months from date of receipt.
Predicted Protein Size:	16 kDa
Gene Name:	superoxide dismutase 1, soluble
Database Link:	NP_000445 Entrez Gene 20655 Mouse Entrez Gene 24786 Rat Entrez Gene 6647 Human P00441
Background:	The protein encoded by this gene binds copper and zinc ions and is one of two isozymes responsible for destroying free superoxide radicals in the body. The encoded isozyme is a soluble cytoplasmic protein; acting as a homodimer to convert naturally-occurring but harmful superoxide radicals to molecular oxygen and hydrogen peroxide. The other isozyme is a mitochondrial protein. Mutations in this gene have been implicated as causes of familial amyotrophic lateral sclerosis. Rare transcript variants have been reported for this gene.?
Synonyms:	ALS; ALS1; HEL-S-44; homodimer; hSod1; IPOA; SOD

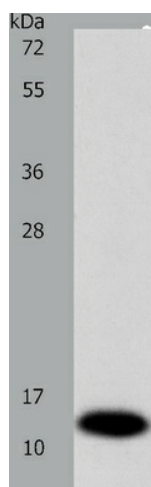


[View online »](#)

Protein Families: Druggable Genome

Protein Pathways: Amyotrophic lateral sclerosis (ALS), Huntington's disease, Prion diseases

Product images:



Predicted band size: 16 kDa. Positive control: Mouse liver tissue lysate. Recommended dilution: 1/1000-5000. (Gel: 12%SDS-PAGE Lysate: 40 ug per lane Primary antibody: 1/1160 dilution Secondary antibody: Goat anti Rabbit IgG - H&L (HRP) at 1/10000 dilution Exposure time: 45 seconds)