

Product datasheet for **TA321128**

PON1 Rabbit Polyclonal Antibody

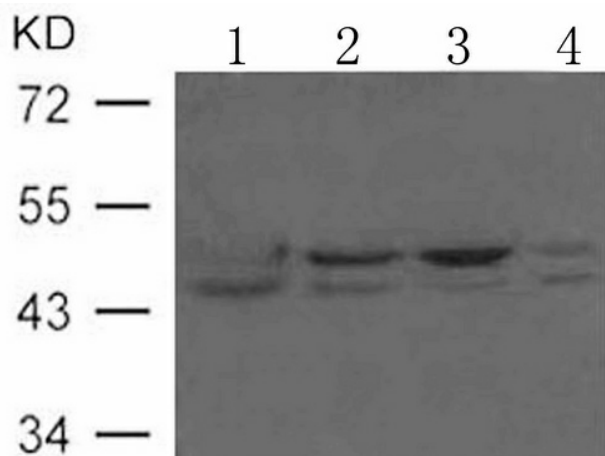
Product data:

Product Type:	Primary Antibodies
Applications:	WB
Recommended Dilution:	WB: 1:500-1000
Reactivity:	Human
Host:	Rabbit
Isotype:	IgG
Clonality:	Polyclonal
Immunogen:	Peptide sequence around aa.420~424(I-K-K-A-T) derived from Human ESA (FLOT2).
Formulation:	PBS pH7.3, 0.05% NaN ₃ , 50% glycerol
Concentration:	lot specific
Purification:	Antigen affinity purification
Conjugation:	Unconjugated
Storage:	Store at -20°C as received.
Stability:	Stable for 12 months from date of receipt.
Predicted Protein Size:	47 kDa
Gene Name:	paraoxonase 1
Database Link:	NP_000437 Entrez Gene 5444 Human P27169
Background:	May act as a scaffolding protein within caveolar membranes, functionally participating in formation of caveolae or caveolae-like vesicles. May be involved in epidermal cell adhesion and epidermal structure and function.
Synonyms:	ESA; MVCD5; PON
Protein Families:	Druggable Genome, Secreted Protein
Protein Pathways:	Metabolic pathways



[View online »](#)

Product images:



Predicted band size: 47 kDa. Positive control: Jurkat, HUVEC, HepG2 and HeLa cells lysate. Recommended dilution: 1/ 500-1000. (Gel: 10%SDS-PAGE Lane 1, 2, 3, 4: Jurkat, HUVEC, HepG2 and HeLa cells lysate Lysates: 30 ug per lane Primary antibody: 1/500 dilution Secondary antibody: Goat anti Rabbit IgG - H&L (HRP) at 1/10000 dilution Exposure time: 1 minute)