

## Product datasheet for **TA321125**

### **MAT1A Rabbit Polyclonal Antibody**

#### **Product data:**

Product Type:	Primary Antibodies
Applications:	WB
Recommended Dilution:	WB: 500-2000 WB positive control: Jurkat cells
Reactivity:	Human, Mouse, Rat
Host:	Rabbit
Isotype:	IgG
Clonality:	Polyclonal
Immunogen:	Fusion protein corresponding to a region derived from 16-394 amino acids of human methionine adenosyltransferase I, alpha
Formulation:	PBS pH7.3, 0.05% NaN <sub>3</sub> , 50% glycerol
Concentration:	lot specific
Purification:	Antigen affinity purification
Conjugation:	Unconjugated
Storage:	Store at -20°C as received.
Stability:	Stable for 12 months from date of receipt.
Predicted Protein Size:	44 kDa
Gene Name:	methionine adenosyltransferase 1A
Database Link:	<a href="#">NP_000420</a> <a href="#">Entrez Gene 11720 Mouse</a> <a href="#">Entrez Gene 25331 Rat</a> <a href="#">Entrez Gene 4143 Human</a> <a href="#">Q00266</a>
Background:	This gene catalyzes a two-step reaction that involves the transfer of the adenosyl moiety of ATP to methionine to form S-adenosylmethionine and triphosphosphate; which is subsequently cleaved to PPi and Pi. S-adenosylmethionine is the source of methyl groups for most biological methylations. The encoded protein is found as a homotetramer (MAT I) or a homodimer (MAT III) whereas a third form; MAT II (gamma); is encoded by the MAT2A gene. Mutations in this gene are associated with methionine adenosyltransferase deficiency.
Synonyms:	MAT; MATA1; SAMS; SAMS1

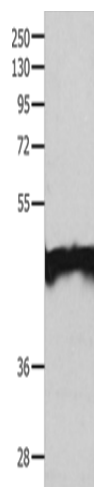


[View online »](#)

Protein Families: Druggable Genome

Protein Pathways: Cysteine and methionine metabolism, Metabolic pathways, Selenoamino acid metabolism

### Product images:



Gel: 10%SDS-PAGE

Lysate: 40  $\mu$ g

Lane: Jurkat cells

Primary antibody: TA321125 (MAT1A Antibody) at dilution 1/200

Secondary antibody: Goat anti rabbit IgG at 1/8000 dilution

Exposure time: 2 minutes