

Product datasheet for **TA321121**

GNRHR Rabbit Polyclonal Antibody

Product data:

Product Type:	Primary Antibodies
Applications:	IHC, WB
Recommended Dilution:	WB: 500-2000 WB positive control: PC-3 and LOVO cell lysates IHC: 50-300 Positive control: Human tonsil Predicted cell location: Cell membrane
Reactivity:	Human, Mouse
Host:	Rabbit
Isotype:	IgG
Clonality:	Polyclonal
Immunogen:	Synthetic peptide corresponding to a region derived from 62-75 amino acids of Human gonadotropin-releasing hormone receptor
Formulation:	PBS pH7.3, 0.05% NaN ₃ , 50% glycerol
Concentration:	lot specific
Purification:	Antigen affinity purification
Conjugation:	Unconjugated
Storage:	Store at -20°C as received.
Stability:	Stable for 12 months from date of receipt.
Predicted Protein Size:	28 kDa
Gene Name:	gonadotropin releasing hormone receptor
Database Link:	NP_000397 Entrez Gene 14715 Mouse Entrez Gene 2798 Human P30968



[View online »](#)

Background:

This gene encodes the receptor for type 1 gonadotropin-releasing hormone. This receptor is a member of the seven-transmembrane; G-protein coupled receptor (GPCR) family. It is expressed on the surface of pituitary gonadotrope cells as well as lymphocytes; breast; ovary; and prostate. Following binding of gonadotropin-releasing hormone; the receptor associates with G-proteins that activate a phosphatidylinositol-calcium second messenger system. Activation of the receptor ultimately causes the release of gonadotropic luteinizing hormone (LH) and follicle stimulating hormone (FSH). Defects in this gene are a cause of hypogonadotropic hypogonadism (HH). Alternative splicing results in multiple transcript variants encoding different isoforms. More than 18 transcription initiation sites in the 5' region and multiple polyA signals in the 3' region have been identified for this gene.

Synonyms:

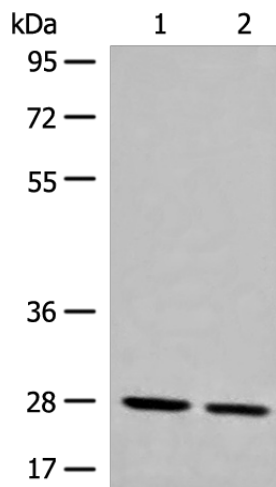
GNRHR1; GRHR; HH7; LHRHR; LRHR

Protein Families:

Druggable Genome, GPCR, Transmembrane

Protein Pathways:

GnRH signaling pathway, Neuroactive ligand-receptor interaction

Product images:

Gel: 8%SDS-PAGE

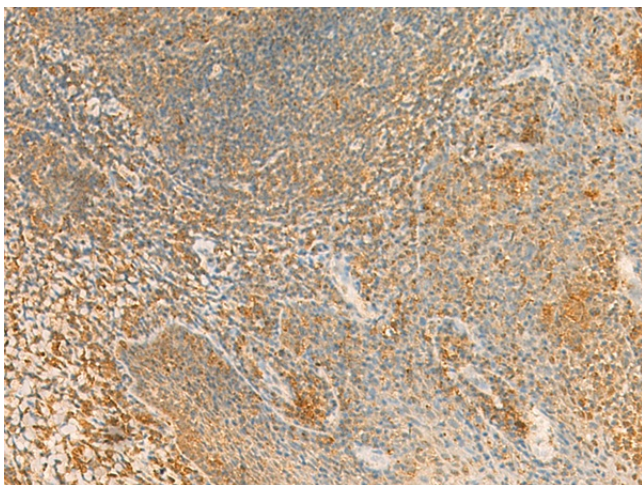
Lysate: 40 μ g

Lane 1-2: PC-3 and LOVO cell lysates

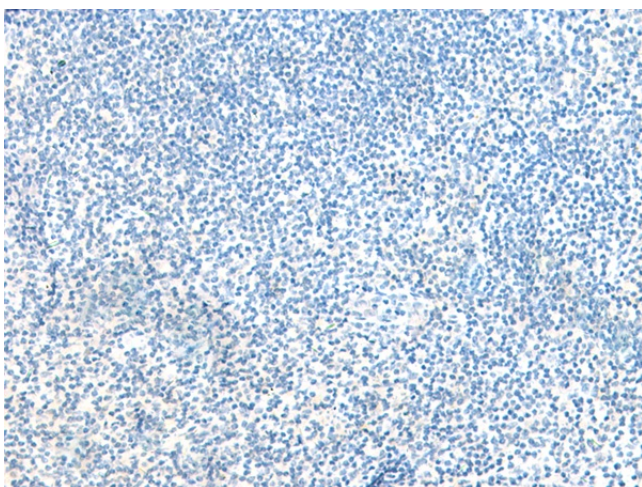
Primary antibody: TA321121 (GNRHR Antibody) at dilution 1/500

Secondary antibody: Goat anti rabbit IgG at 1/8000 dilution

Exposure time: 3 seconds



Immunohistochemistry of paraffin-embedded Human tonsil tissue using TA321121 (GNRHR Antibody) at dilution 1/40 (Original magnification: ×200)



Immunohistochemistry of paraffin-embedded Human tonsil tissue using TA321121 (GNRHR Antibody) at dilution 1/40, treated with synthetic peptide. (Original magnification: ×200)