

Product datasheet for **TA321115**

TIMP3 Rabbit Polyclonal Antibody

Product data:

Product Type:	Primary Antibodies
Applications:	IHC, WB
Recommended Dilution:	WB: 200-1000 WB positive control: Huvec cells IHC: 15-50 Positive control: Human thyroid cancer Predicted cell location: Cytoplasm
Reactivity:	Human, Mouse, Rat
Host:	Rabbit
Isotype:	IgG
Clonality:	Polyclonal
Immunogen:	Fusion protein corresponding to a region derived from 27-211 amino acids of human TIMP metalloproteinase inhibitor 3
Formulation:	PBS pH7.3, 0.05% NaN ₃ , 50% glycerol
Concentration:	lot specific
Purification:	Antigen affinity purification
Conjugation:	Unconjugated
Storage:	Store at -20°C as received.
Stability:	Stable for 12 months from date of receipt.
Predicted Protein Size:	24 kDa
Gene Name:	TIMP metalloproteinase inhibitor 3
Database Link:	NP_000353 Entrez Gene 21859 Mouse Entrez Gene 25358 Rat Entrez Gene 7078 Human P35625



[View online »](#)

Background:

This gene belongs to the TIMP gene family. The proteins encoded by this gene family are inhibitors of the matrix metalloproteinases; a group of peptidases involved in degradation of the extracellular matrix (ECM). Expression of this gene is induced in response to mitogenic stimulation and this netrin domain-containing protein is localized to the ECM. Mutations in this gene have been associated with the autosomal dominant disorder Sorsby's fundus dystrophy.

Synonyms:

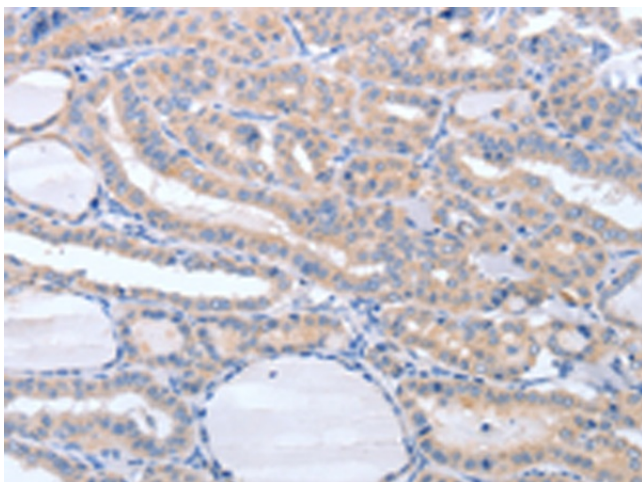
HSMRK222; K222; K222TA2; SFD

Protein Families:

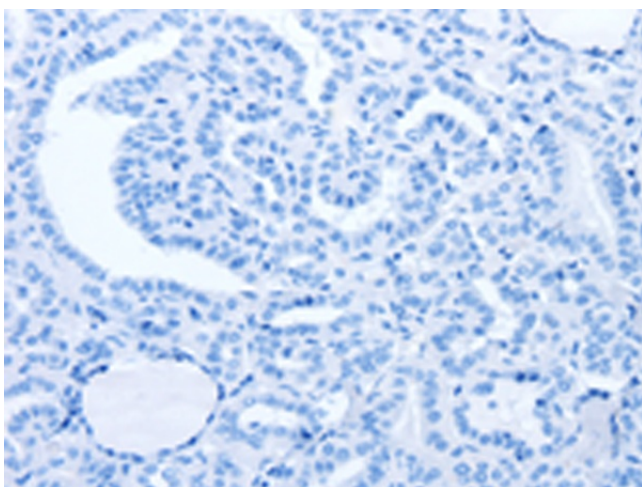
Druggable Genome, Secreted Protein

Product images:

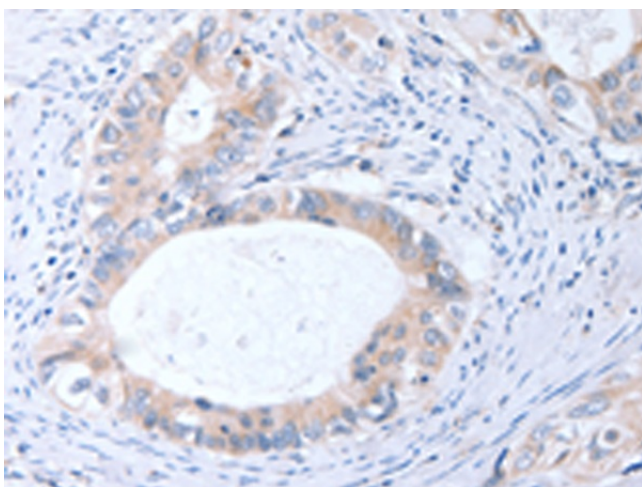
Gel: 12%SDS-PAGE
Lysate: 40 µg
Lane: Huvec cells
Primary antibody: TA321115 (TIMP3 Antibody) at dilution 1/250
Secondary antibody: Goat anti rabbit IgG at 1/8000 dilution
Exposure time: 10 seconds



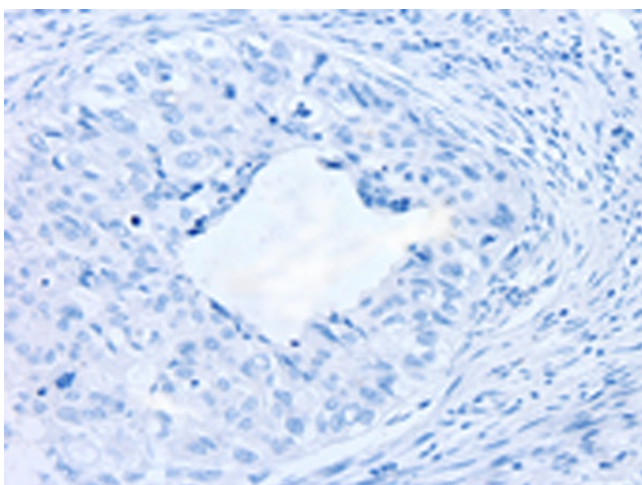
Immunohistochemistry of paraffin-embedded Human thyroid cancer tissue using TA321115 (TIMP3 Antibody) at dilution 1/20 (Original magnification: ×200)



Immunohistochemistry of paraffin-embedded Human thyroid cancer tissue using TA321115 (TIMP3 Antibody) at dilution 1/20, treated with fusion protein. (Original magnification: x200)



Immunohistochemistry of paraffin-embedded Human cervical cancer tissue using TA321115 (TIMP3 Antibody) at dilution 1/20 (Original magnification: x200)



Immunohistochemistry of paraffin-embedded Human cervical cancer tissue using TA321115 (TIMP3 Antibody) at dilution 1/20, treated with fusion protein. (Original magnification: x200)