

Product datasheet for **TA321112**

alpha Synuclein (SNCA) Rabbit Polyclonal Antibody

Product data:

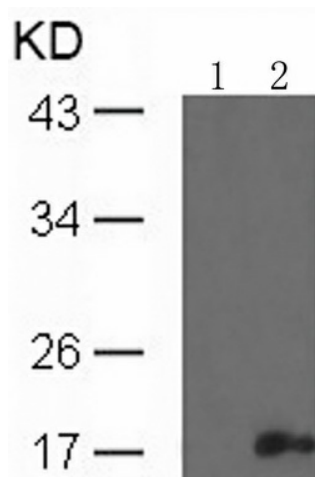
Product Type:	Primary Antibodies
Applications:	IF, WB
Recommended Dilution:	WB: 1:500-1000, IF: 1:100-200
Reactivity:	Human, Mouse, Rat
Modifications:	Phospho-specific
Host:	Rabbit
Isotype:	IgG
Clonality:	Polyclonal
Immunogen:	Peptide sequence around phosphorylation site of tyrosine 136 (Q-D-Y(p)-E-P) derived from Human α -Synuclein.
Formulation:	PBS pH7.3, 0.05% NaN ₃ , 50% glycerol
Concentration:	lot specific
Purification:	Antigen affinity purification
Conjugation:	Unconjugated
Storage:	Store at -20°C as received.
Stability:	Stable for 12 months from date of receipt.
Predicted Protein Size:	18 kDa
Gene Name:	synuclein alpha
Database Link:	NP_000336 Entrez Gene 20617 Mouse Entrez Gene 29219 Rat Entrez Gene 6622 Human P37840

Background: May be involved in the regulation of dopamine release and transport. Soluble protein, normally localized primarily at the presynaptic region of axons, which can form filamentous aggregates that are the major non amyloid component of intracellular inclusions in several neurodegenerative diseases (synucleinopathies). Induces fibrillization of microtubule-associated protein tau. Reduces neuronal responsiveness to various apoptotic stimuli, leading to a decreased caspase-3 activation.

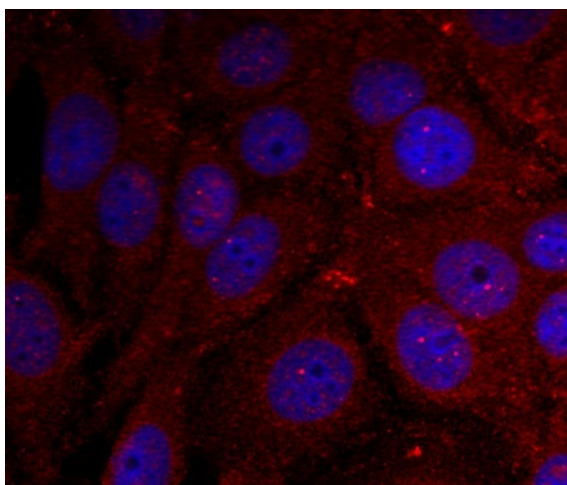


[View online »](#)

Synonyms: NACP; PARK1; PARK4; PD1
Protein Families: Druggable Genome
Protein Pathways: Alzheimer's disease, Parkinson's disease

Product images:

Predicted band size: 18 kDa. Positive control: Mouse brain tissue lysate. Recommended dilution: 1/ 500-1000. (Gel: 12%SDS-PAGE Lane 1: Treated with the peptide Lane 2: Mouse brain tissue lysate Lysates: 30 ug per lane Primary antibody: 1/500 dilution Secondary antibody: Goat anti Rabbit IgG - H&L (HRP) at 1/10000 dilution Exposure time: 1 minute)



Predicted cell location: Cytoplasm; Membrane; Nucleus. Positive control: HeLa cells. Recommended dilution: 1/ 100-200. The image is immunofluorescence of methanol-fixed HeLa cells using SNCA (Phospho-Tyr136) antibody at dilution 1/100. (Original magnification: ×200)