

Product datasheet for **TA321111**

alpha Synuclein (SNCA) Rabbit Polyclonal Antibody

Product data:

Product Type:	Primary Antibodies
Applications:	IF, WB
Recommended Dilution:	WB: 1:500-1000, IF: 1:100-200
Reactivity:	Human
Modifications:	Phospho-specific
Host:	Rabbit
Isotype:	IgG
Clonality:	Polyclonal
Immunogen:	Peptide sequence around phosphorylation site of tyrosine 125 (E-A-Y(p)-E-M) derived from Human α -Synuclein.
Formulation:	PBS pH7.3, 0.05% NaN ₃ , 50% glycerol
Concentration:	lot specific
Purification:	Antigen affinity purification
Conjugation:	Unconjugated
Storage:	Store at -20°C as received.
Stability:	Stable for 12 months from date of receipt.
Predicted Protein Size:	18 kDa
Gene Name:	synuclein alpha
Database Link:	NP_000336 Entrez Gene 6622 Human P37840



[View online »](#)

Background:

SncA is a member of the synuclein family of structurally related proteins that are prominently expressed in the central nervous system, which also includes beta- and gamma-synuclein. Synucleins are abundantly expressed in the brain and SncA and Snc-Beta inhibit phospholipase D2 selectively. SncA may serve to integrate presynaptic signaling and membrane trafficking. Aggregated SncA proteins form brain lesions that are hallmarks of neurodegenerative synucleinopathies. Defects in SncA play a role in the pathogenesis of Parkinson disease. SncA peptides are a major component of amyloid plaques in the brains of patients with Alzheimer disease. SncA shares 95% sequence homology with rat SncA. Rat SncA is specifically expressed in brain and is associated with synaptosomal membranes in neurons

Synonyms:

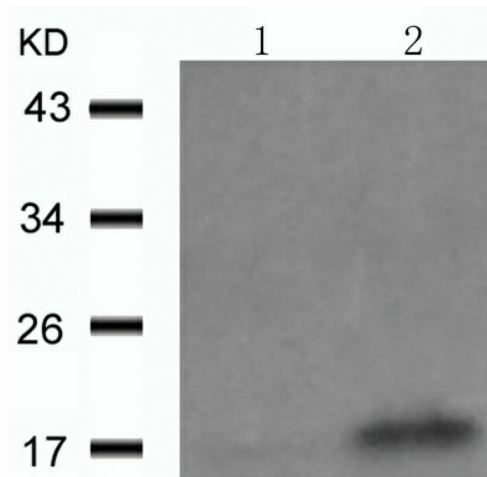
NACP; PARK1; PARK4; PD1

Protein Families:

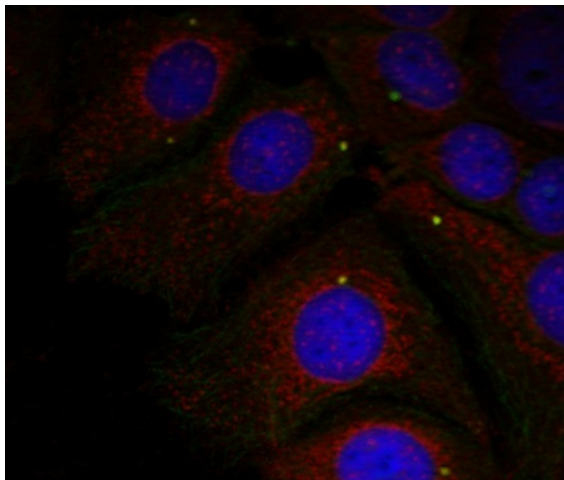
Druggable Genome

Protein Pathways:

Alzheimer's disease, Parkinson's disease

Product images:


Predicted band size: 18 kDa. Positive control: C2C12 cells treated with Anisomycin lysate. Recommended dilution: 1/ 500-1000. (Gel: 12%SDS-PAGE Lane 1: C2C12 cells untreated with Anisomycin lysate Lane 2: C2C12 cells treated with Anisomycin lysate Lysates: 30 ug per lane Primary antibody: 1/500 dilution Secondary antibody: Goat anti Rabbit IgG - H&L (HRP) at 1/10000 dilution Exposure time: 1 minute)



Predicted cell location: Cytoplasm; Membrane; Nucleus. Positive control: HeLa cells. Recommended dilution: 1/ 100-200. The image is immunofluorescence of methanol-fixed HeLa cells using SNCA (Phospho-Tyr125) antibody at dilution 1/100. (Original magnification: ×200)