

Product datasheet for **TA321110**

Parathyroid Hormone Receptor 1 (PTH1R) Rabbit Polyclonal Antibody

Product data:

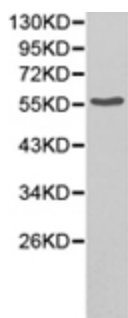
Product Type:	Primary Antibodies
Applications:	WB
Recommended Dilution:	WB: 1:500-2000
Reactivity:	Human, Rabbit
Host:	Rabbit
Isotype:	IgG
Clonality:	Polyclonal
Immunogen:	Fusion protein corresponding to C terminal 130 amino acids of human parathyroid hormone 1 receptor
Formulation:	PBS pH7.3, 0.05% NaN ₃ , 50% glycerol
Concentration:	lot specific
Purification:	Antigen affinity purification
Conjugation:	Unconjugated
Storage:	Store at -20°C as received.
Stability:	Stable for 12 months from date of receipt.
Predicted Protein Size:	66 kDa
Gene Name:	parathyroid hormone 1 receptor
Database Link:	NP_000307 Entrez Gene 5745 Human Q03431
Background:	The protein encoded by this gene is a member of the G-protein coupled receptor family 2. This protein is a receptor for parathyroid hormone (PTH) and for parathyroid hormone-like hormone (PTH ₁ LH). The activity of this receptor is mediated by G proteins which activate adenylyl cyclase and also a phosphatidylinositol-calcium second messenger system. Defects in this receptor are known to be the cause of Jansen's metaphyseal chondrodysplasia (JMC), chondrodysplasia Blomstrand type (BOCD), as well as enchondromatosis. Two transcript variants encoding the same protein have been found for this gene.
Synonyms:	PFE; PTHR; PTHR1

[View online »](#)

Protein Families: Druggable Genome, GPCR, Transmembrane

Protein Pathways: Neuroactive ligand-receptor interaction

Product images:



Predicted band size: 66 kDa. Positive control: Jurkat cell lysate. Recommended dilution: 1/500-2000. (Gel: 8%SDS-PAGE Lysate: 40 ug Primary antibody: 1/500 dilution Secondary antibody: Goat anti Rabbit IgG - H&L (HRP) at 1/10000 dilution Exposure time: 1 minute)