

Product datasheet for **TA321108S**

Protein S (PROS1) Rabbit Polyclonal Antibody

Product data:

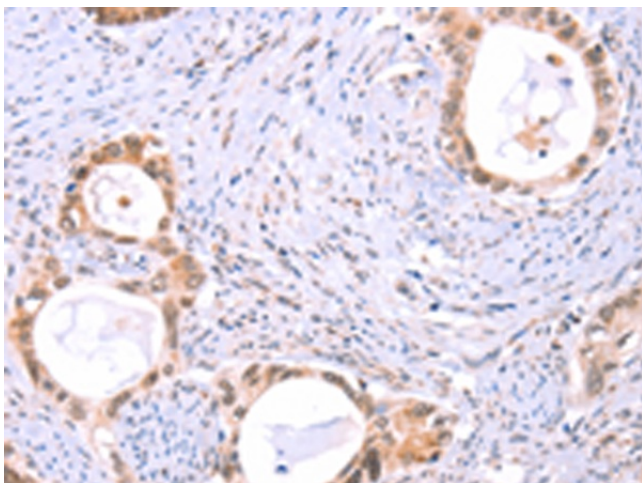
Product Type:	Primary Antibodies
Applications:	IHC
Recommended Dilution:	IHC: 50-200 Positive control: Human cervical cancer Predicted cell location: Cytoplasm
Reactivity:	Human
Host:	Rabbit
Isotype:	IgG
Clonality:	Polyclonal
Immunogen:	Fusion protein corresponding to a region derived from 484-666 amino acids of human protein S (alpha)
Formulation:	PBS pH7.3, 0.05% NaN ₃ , 50% glycerol
Purification:	Antigen affinity purification
Conjugation:	Unconjugated
Storage:	Store at -20°C as received.
Stability:	Stable for 12 months from date of receipt.
Gene Name:	protein S (alpha)
Database Link:	NP_000304 Entrez Gene 5627 Human P07225
Background:	This gene encodes a vitamin K-dependent plasma protein that functions as a cofactor for the anticoagulant protease; activated protein C (APC) to inhibit blood coagulation. It is found in plasma in both a free; functionally active form and also in an inactive form complexed with C4b-binding protein. Mutations in this gene result in autosomal dominant hereditary thrombophilia. An inactive pseudogene of this locus is located at an adjacent region on chromosome 3.
Synonyms:	PROS; PS21; PS22; PS23; PS24; PS25; PSA; THPH5; THPH6
Protein Families:	Druggable Genome, Secreted Protein



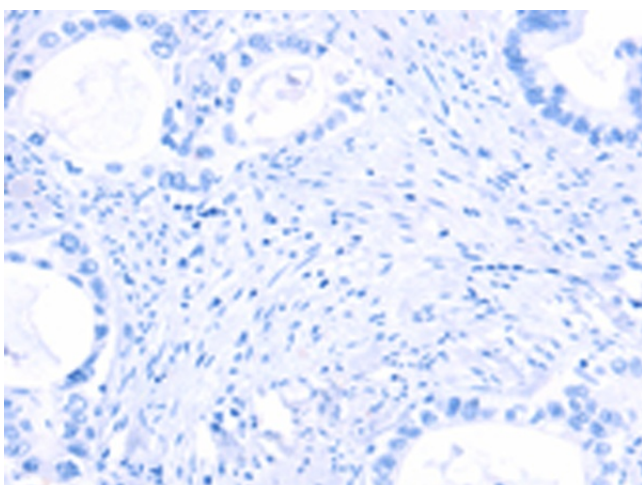
[View online »](#)

Protein Pathways: Complement and coagulation cascades

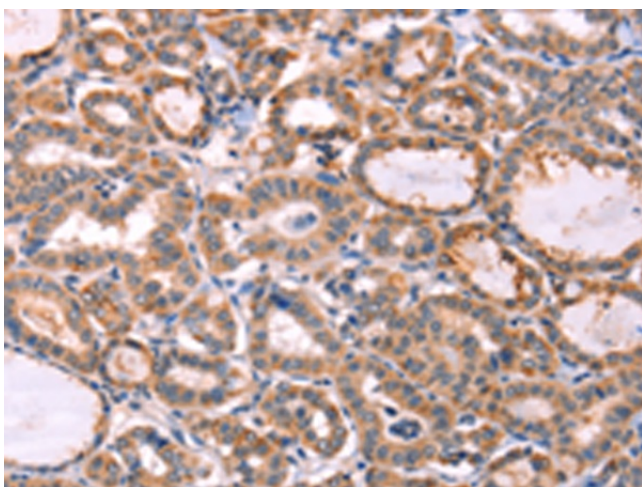
Product images:



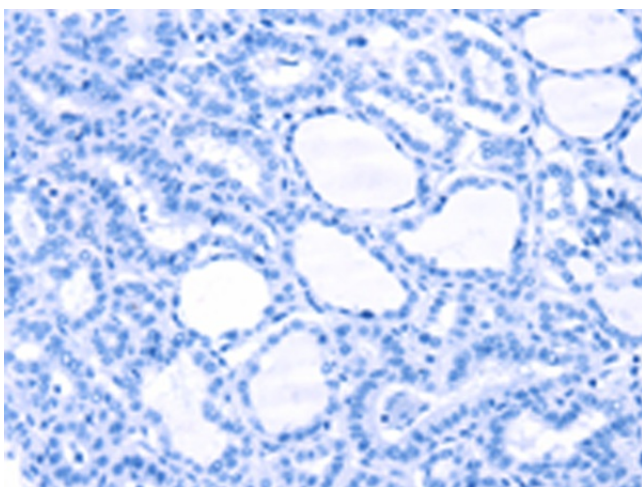
Immunohistochemistry of paraffin-embedded Human cervical cancer tissue using [TA321108] (PROS1 Antibody) at dilution 1/60 (Original magnification: $\times 200$)



Immunohistochemistry of paraffin-embedded Human cervical cancer tissue using [TA321108] (PROS1 Antibody) at dilution 1/60, treated with fusion protein. (Original magnification: $\times 200$)



Immunohistochemistry of paraffin-embedded Human thyroid cancer tissue using [TA321108] (PROS1 Antibody) at dilution 1/60 (Original magnification: $\times 200$)



Immunohistochemistry of paraffin-embedded Human thyroid cancer tissue using [TA321108] (PROS1 Antibody) at dilution 1/60, treated with fusion protein. (Original magnification: $\times 200$)