

Product datasheet for **TA321106**

PON2 Rabbit Polyclonal Antibody

Product data:

Product Type:	Primary Antibodies
Applications:	WB
Recommended Dilution:	WB: 1:500-2000
Reactivity:	Human, Mouse, Rat
Host:	Rabbit
Isotype:	IgG
Clonality:	Polyclonal
Immunogen:	Fusion protein corresponding to N terminal 210 amino acids of human paraoxonase 2
Formulation:	PBS pH7.3, 0.05% NaN ₃ , 50% glycerol
Concentration:	lot specific
Purification:	Antigen affinity purification
Conjugation:	Unconjugated
Storage:	Store at -20°C as received.
Stability:	Stable for 12 months from date of receipt.
Predicted Protein Size:	39 kDa
Gene Name:	paraoxonase 2
Database Link:	NP_000296 Entrez Gene 296851 RatEntrez Gene 330260 MouseEntrez Gene 5445 Human Q15165

Background: This gene encodes a member of the paraoxonase gene family, which includes three known members located adjacent to each other on the long arm of chromosome 7. The encoded protein is ubiquitously expressed in human tissues, membrane-bound, and may act as a cellular antioxidant, protecting cells from oxidative stress. Hydrolytic activity against acylhomoserine lactones, important bacterial quorum-sensing mediators, suggests the encoded protein may also play a role in defense responses to pathogenic bacteria. Mutations in this gene may be associated with vascular disease and a number of quantitative phenotypes related to diabetes. Alternatively spliced transcript variants encoding different isoforms have been described.



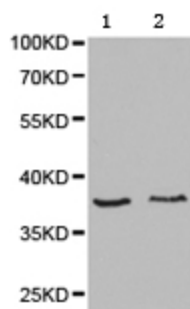
[View online »](#)

Synonyms: A-esterase 2; aromatic esterase 2; arylesterase 2; paraoxonase 2; paraoxonase nirs; serum arylalkylphosphatase 2; serum paraoxonase

Protein Families: Druggable Genome

Protein Pathways: Metabolic pathways

Product images:



Predicted band size: 39 kDa. Positive control: HepG2 and 293T cell lysate. Recommended dilution: 1/500-2000. (Gel: 10%SDS-PAGE Lane 1: HepG2 cell lysate Lane 2: 293T cell lysate Lysate: 40 ug per lane Primary antibody: 1/500 dilution Secondary antibody: Goat anti Rabbit IgG - H&L (HRP) at 1/10000 dilution Exposure time: 1 minute)