

## Product datasheet for **TA321093S**

### Lysozyme (LYZ) Rabbit Polyclonal Antibody

#### Product data:

|                         |  |
|-------------------------|--|
| Product Type:           | Primary Antibodies   |
| Applications:           | IHC, WB  |
| Recommended Dilution:   | WB: 200-1000<br>WB positive control: Human fetal lung tissue<br>IHC: 25-100<br>Positive control: Human breast cancer<br>Predicted cell location: Cytoplasm   |
| Reactivity:             | Human  |
| Host:                   | Rabbit   |
| Isotype:                | IgG  |
| Clonality:              | Polyclonal   |
| Immunogen:              | Fusion protein corresponding to a region derived from 19-148 amino acids of human lysozymelysozyme   |
| Formulation:            | PBS pH7.3, 0.05% NaN <sub>3</sub> , 50% glycerol   |
| Purification:           | Antigen affinity purification  |
| Conjugation:            | Unconjugated   |
| Storage:                | Store at -20°C as received.  |
| Stability:              | Stable for 12 months from date of receipt.   |
| Predicted Protein Size: | 17 kDa   |
| Gene Name:              | lysozyme   |
| Database Link:          | <a href="#">NP_000230</a><br><a href="#">Entrez Gene 4069 Human P61626</a>   |
| Background:             | This gene encodes human lysozyme; whose natural substrate is the bacterial cell wall peptidoglycan (cleaving the beta[1-4]glycosidic linkages between N-acetylmuramic acid and N-acetylglucosamine). Lysozyme is one of the anti-microbial agents found in human milk; and is also present in spleen; lung; kidney; white blood cells; plasma; saliva; and tears. Missense mutations in LYZ have been identified in heritable renal amyloidosis. |



[View online »](#)

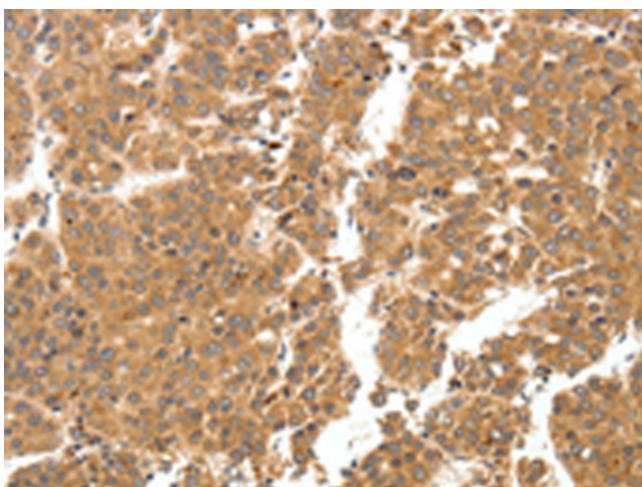
Synonyms: LYZF1; LZM

Protein Families: Druggable Genome

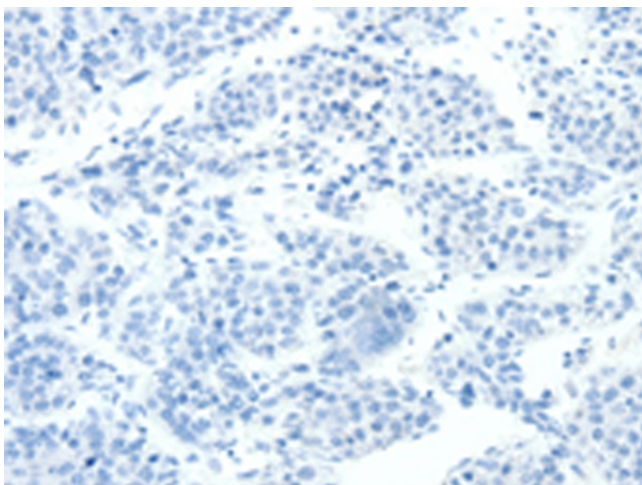
### Product images:



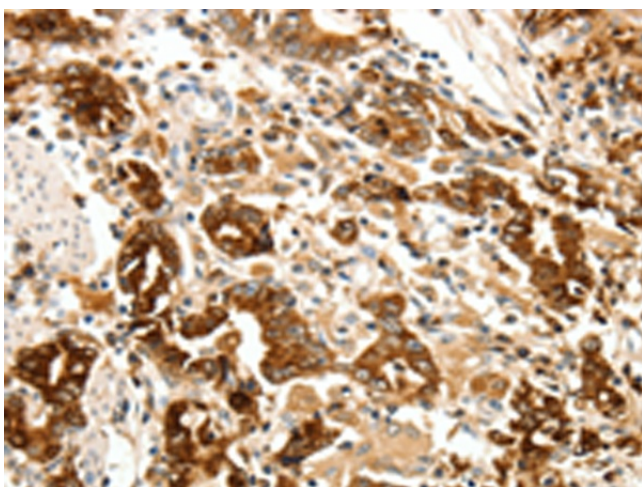
Gel: 12%SDS-PAGE  
Lysate: 40 µg  
Lane: Human fetal lung tissue  
Primary antibody: [TA321093] (LYZ Antibody) at dilution 1/200  
Secondary antibody: Goat anti rabbit IgG at 1/8000 dilution  
Exposure time: 45 seconds



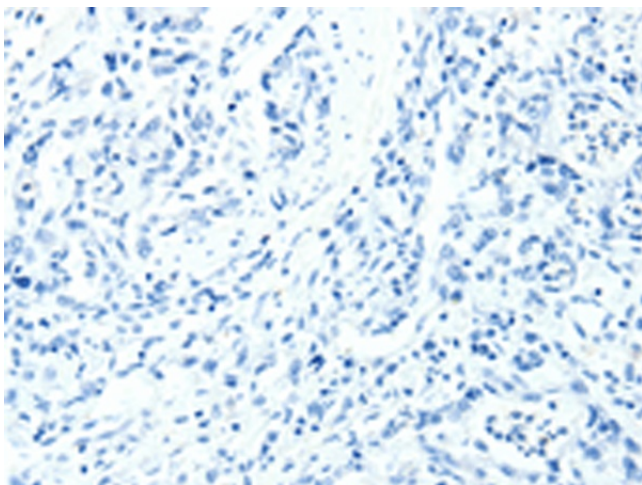
Immunohistochemistry of paraffin-embedded Human breast cancer tissue using [TA321093] (LYZ Antibody) at dilution 1/20 (Original magnification: ×200)



Immunohistochemistry of paraffin-embedded Human breast cancer tissue using [TA321093] (LYZ Antibody) at dilution 1/20, treated with fusion protein. (Original magnification: ×200)



Immunohistochemistry of paraffin-embedded Human gastric cancer tissue using [TA321093] (LYZ Antibody) at dilution 1/20 (Original magnification: ×200)



Immunohistochemistry of paraffin-embedded Human gastric cancer tissue using [TA321093] (LYZ Antibody) at dilution 1/20, treated with fusion protein. (Original magnification: ×200)