

## Product datasheet for **TA321093**

### Lysozyme (LYZ) Rabbit Polyclonal Antibody

#### Product data:

Product Type:	Primary Antibodies
Applications:	IHC, WB
Recommended Dilution:	WB: 200-1000 WB positive control: Human fetal lung tissue IHC: 25-100 Positive control: Human breast cancer Predicted cell location: Cytoplasm
Reactivity:	Human
Host:	Rabbit
Isotype:	IgG
Clonality:	Polyclonal
Immunogen:	Fusion protein corresponding to a region derived from 19-148 amino acids of human lysozymelysozyme
Formulation:	PBS pH7.3, 0.05% NaN <sub>3</sub> , 50% glycerol
Concentration:	lot specific
Purification:	Antigen affinity purification
Conjugation:	Unconjugated
Storage:	Store at -20°C as received.
Stability:	Stable for 12 months from date of receipt.
Predicted Protein Size:	17 kDa
Gene Name:	lysozyme
Database Link:	<a href="#">NP_000230</a> <a href="#">Entrez Gene 4069 Human P61626</a>



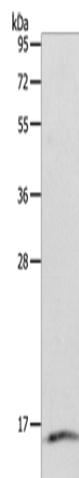
[View online »](#)

**Background:** This gene encodes human lysozyme; whose natural substrate is the bacterial cell wall peptidoglycan (cleaving the beta[1-4]glycosidic linkages between N-acetylmuramic acid and N-acetylglucosamine). Lysozyme is one of the anti-microbial agents found in human milk; and is also present in spleen; lung; kidney; white blood cells; plasma; saliva; and tears. Missense mutations in LYZ have been identified in heritable renal amyloidosis.

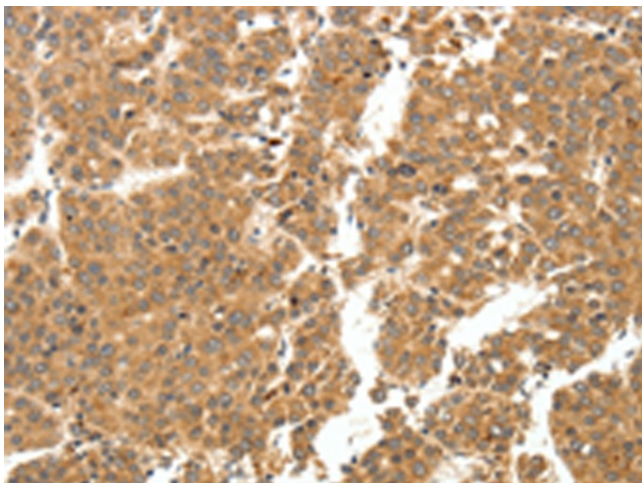
**Synonyms:** LYZF1; LZM

**Protein Families:** Druggable Genome

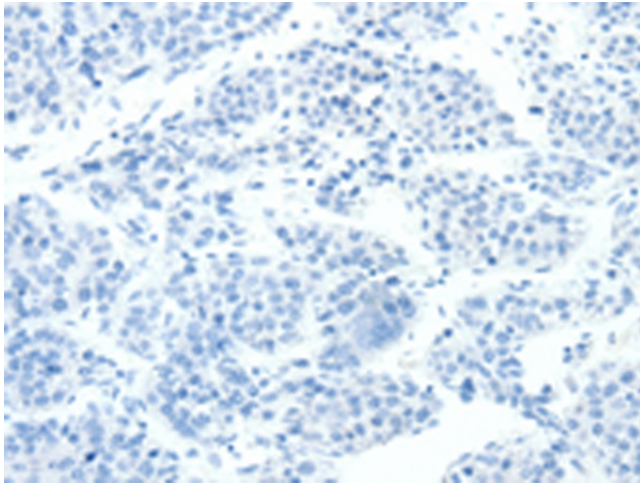
### Product images:



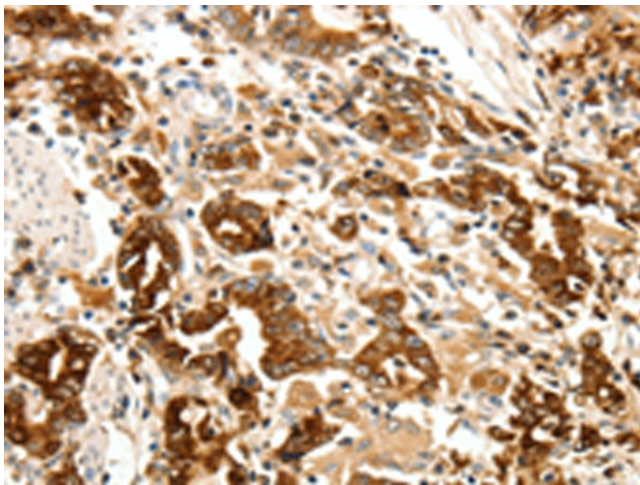
Gel: 12%SDS-PAGE  
Lysate: 40 µg  
Lane: Human fetal lung tissue  
Primary antibody: TA321093 (LYZ Antibody) at dilution 1/200  
Secondary antibody: Goat anti rabbit IgG at 1/8000 dilution  
Exposure time: 45 seconds



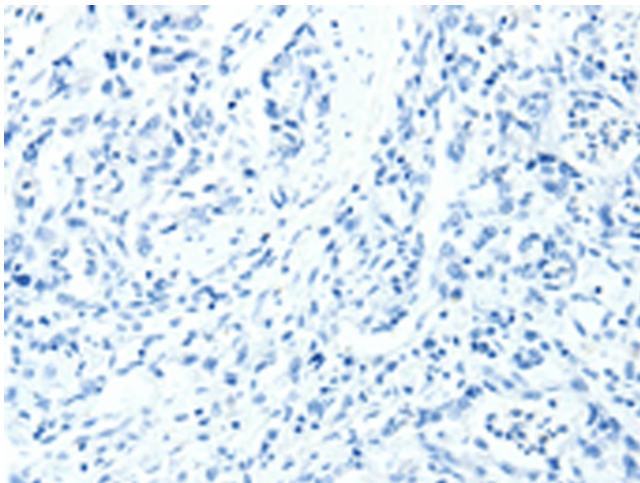
Immunohistochemistry of paraffin-embedded Human breast cancer tissue using TA321093 (LYZ Antibody) at dilution 1/20 (Original magnification: ×200)



Immunohistochemistry of paraffin-embedded Human breast cancer tissue using TA321093 (LYZ Antibody) at dilution 1/20, treated with fusion protein. (Original magnification: ×200)



Immunohistochemistry of paraffin-embedded Human gastric cancer tissue using TA321093 (LYZ Antibody) at dilution 1/20 (Original magnification: ×200)



Immunohistochemistry of paraffin-embedded Human gastric cancer tissue using TA321093 (LYZ Antibody) at dilution 1/20, treated with fusion protein. (Original magnification: ×200)