

Product datasheet for **TA321092S**

Lysozyme (LYZ) Rabbit Polyclonal Antibody

Product data:

Product Type:	Primary Antibodies
Applications:	IHC, WB
Recommended Dilution:	WB: 200-1000 WB positive control: Hela cells IHC: 25-100 Positive control: Human thyroid cancer Predicted cell location: Cytoplasm
Reactivity:	Human
Host:	Rabbit
Isotype:	IgG
Clonality:	Polyclonal
Immunogen:	Fusion protein corresponding to a region derived from 19-148 amino acids of human lysozymelysozyme
Formulation:	PBS pH7.3, 0.05% NaN ₃ , 50% glycerol
Purification:	Antigen affinity purification
Conjugation:	Unconjugated
Storage:	Store at -20°C as received.
Stability:	Stable for 12 months from date of receipt.
Predicted Protein Size:	17 kDa
Gene Name:	lysozyme
Database Link:	NP_000230 Entrez Gene 4069 Human P61626
Background:	This gene encodes human lysozyme; whose natural substrate is the bacterial cell wall peptidoglycan (cleaving the beta[1-4]glycosidic linkages between N-acetylmuramic acid and N-acetylglucosamine). Lysozyme is one of the anti-microbial agents found in human milk; and is also present in spleen; lung; kidney; white blood cells; plasma; saliva; and tears. Missense mutations in LYZ have been identified in heritable renal amyloidosis.



[View online »](#)

Synonyms: LYZF1; LZM

Protein Families: Druggable Genome

Product images:



Gel: 12%SDS-PAGE

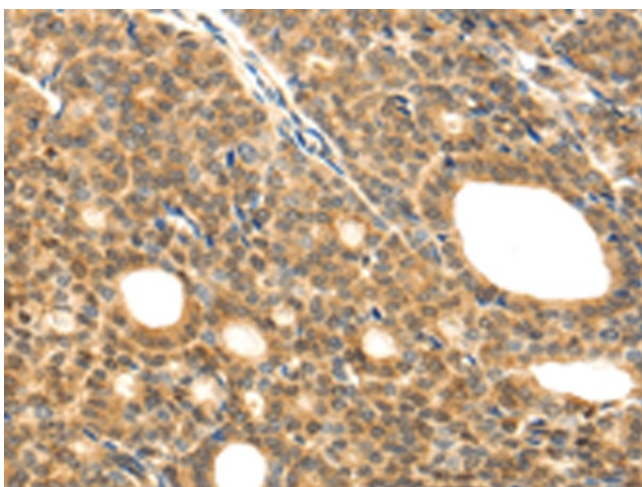
Lysate: 40 µg

Lane: HeLa cells

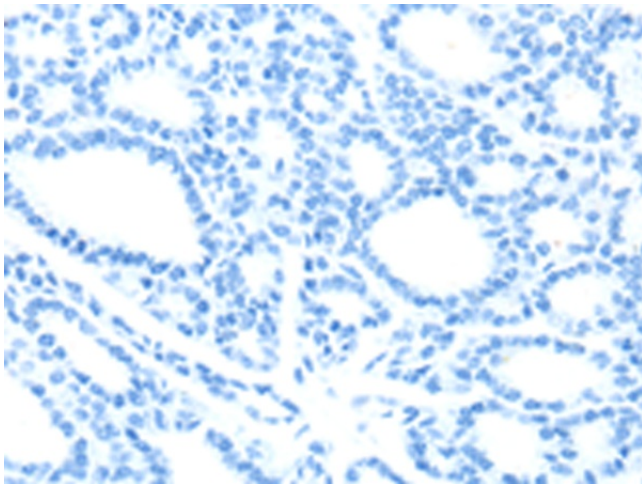
Primary antibody: [TA321092] (LYZ Antibody) at dilution 1/200

Secondary antibody: Goat anti rabbit IgG at 1/8000 dilution

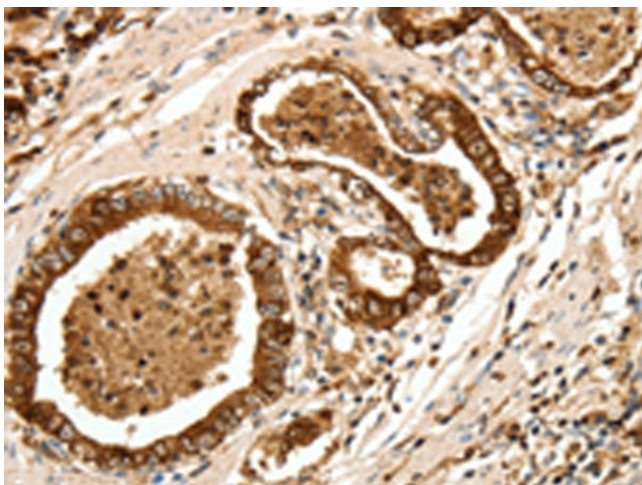
Exposure time: 45 seconds



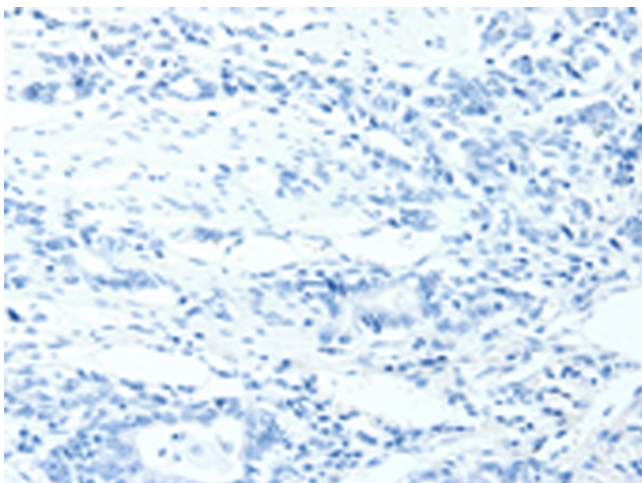
Immunohistochemistry of paraffin-embedded Human thyroid cancer tissue using [TA321092] (LYZ Antibody) at dilution 1/20 (Original magnification: ×200)



Immunohistochemistry of paraffin-embedded Human thyroid cancer tissue using [TA321092] (LYZ Antibody) at dilution 1/20, treated with fusion protein. (Original magnification: $\times 200$)



Immunohistochemistry of paraffin-embedded Human gastric cancer tissue using [TA321092] (LYZ Antibody) at dilution 1/20 (Original magnification: $\times 200$)



Immunohistochemistry of paraffin-embedded Human gastric cancer tissue using [TA321092] (LYZ Antibody) at dilution 1/20, treated with fusion protein. (Original magnification: $\times 200$)