

Product datasheet for **TA321090**

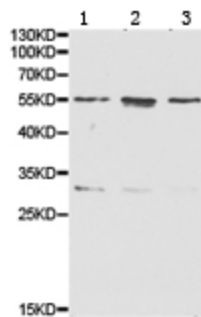
LIPC Rabbit Polyclonal Antibody

Product data:

Product Type:	Primary Antibodies
Applications:	WB
Recommended Dilution:	WB: 1:500-2000
Reactivity:	Human, Mouse, Rat
Host:	Rabbit
Isotype:	IgG
Clonality:	Polyclonal
Immunogen:	Fusion protein corresponding to C terminal 220 amino acids of human lipase, hepatic
Formulation:	PBS pH7.3, 0.05% NaN ₃ , 50% glycerol
Concentration:	lot specific
Purification:	Antigen affinity purification
Conjugation:	Unconjugated
Storage:	Store at -20°C as received.
Stability:	Stable for 12 months from date of receipt.
Predicted Protein Size:	56 kDa
Gene Name:	lipase C, hepatic type
Database Link:	NP_000227 Entrez Gene 15450 MouseEntrez Gene 24538 RatEntrez Gene 3990 Human P11150
Background:	LIPC, also named as HTGL and HL, belongs to the AB hydrolase superfamily and Lipase family. It has the capacity to catalyze hydrolysis of phospholipids, mono-, di-, and triglycerides, and acyl-CoA thioesters. LIPC is an important enzyme in HDL metabolism. It binds heparin.
Synonyms:	HDLCQ12; HL; HTGL; LIPH
Protein Families:	Druggable Genome, Secreted Protein
Protein Pathways:	Glycerolipid metabolism, Metabolic pathways



[View online »](#)

Product images:

Predicted band size: 56 kDa. Positive control: HepG2, HT-29 and MCF7 cell lysate.
Recommended dilution: 1/500-2000. (Gel: 10%SDS-PAGE Lane 1: HepG2 cell lysate Lane 2: HT-29 cell lysate Lane 3: MCF7 cell lysate Lysates: 40 ug per lane Primary antibody: 1/500 dilution Secondary antibody: Goat anti Rabbit IgG - H&L (HRP) at 1/10000 dilution Exposure time: 1 minute)