

Product datasheet for **TA321088**

Leptin (LEP) Rabbit Polyclonal Antibody

Product data:

Product Type:	Primary Antibodies
Applications:	IHC
Recommended Dilution:	IHC: 25-100 Positive control: Human thyroid cancer Predicted cell location: Cytoplasm
Reactivity:	Human, Mouse, Rat
Host:	Rabbit
Isotype:	IgG
Clonality:	Polyclonal
Immunogen:	Full length fusion protein
Formulation:	PBS pH7.3, 0.05% NaN ₃ , 50% glycerol
Concentration:	lot specific
Purification:	Antigen affinity purification
Conjugation:	Unconjugated
Storage:	Store at -20°C as received.
Stability:	Stable for 12 months from date of receipt.
Gene Name:	leptin
Database Link:	NP_000221 Entrez Gene 16846 Mouse Entrez Gene 25608 Rat Entrez Gene 3952 Human P41159

Background: This gene encodes a type I transmembrane protein and is a tumor-specific endothelial marker that has been implicated in colorectal cancer. The encoded protein has been shown to also be a docking protein or receptor for Bacillus anthracis toxin; the causative agent of the disease; anthrax. The binding of the protective antigen (PA) component; of the tripartite anthrax toxin; to this receptor protein mediates delivery of toxin components to the cytosol of cells. Once inside the cell; the other two components of anthrax toxin; edema factor (EF) and lethal factor (LF) disrupt normal cellular processes. Three alternatively spliced variants that encode different protein isoforms have been described.



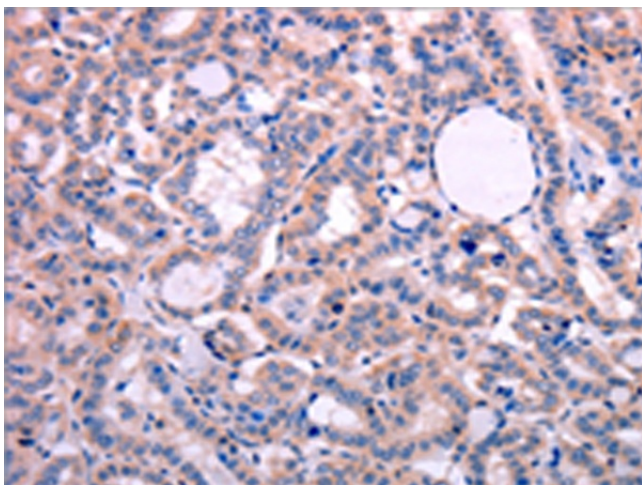
[View online »](#)

Synonyms: LEPD; OB; OBS

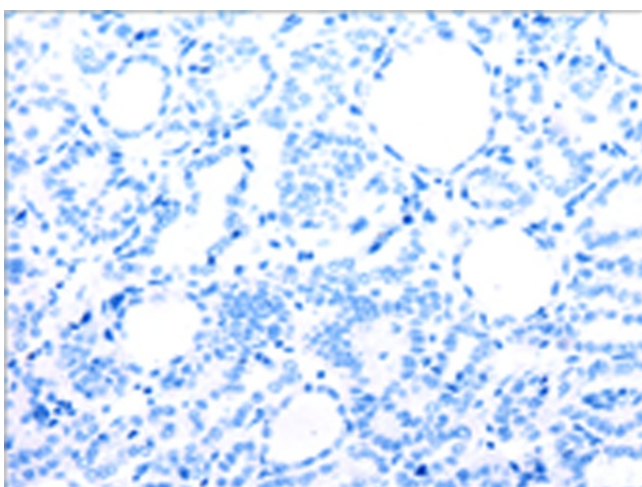
Protein Families: Druggable Genome, Secreted Protein

Protein Pathways: Adipocytokine signaling pathway, Cytokine-cytokine receptor interaction, Jak-STAT signaling pathway, Neuroactive ligand-receptor interaction

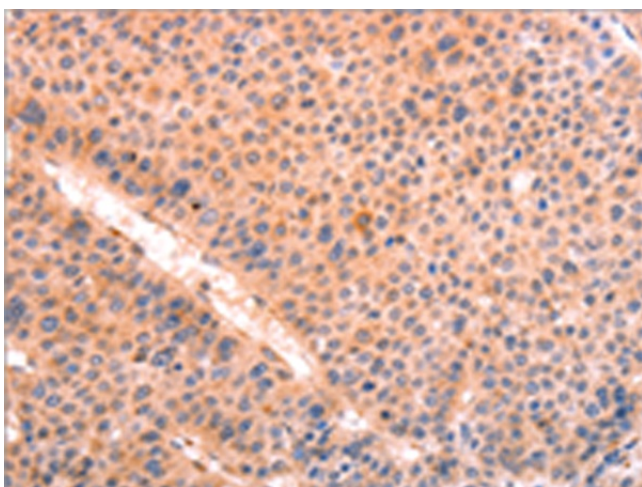
Product images:



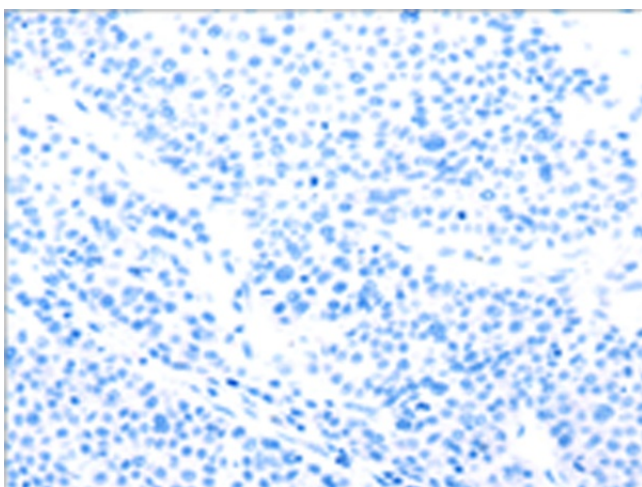
Immunohistochemistry of paraffin-embedded Human thyroid cancer tissue using TA321088 (LEP Antibody) at dilution 1/30 (Original magnification: $\times 200$)



Immunohistochemistry of paraffin-embedded Human thyroid cancer tissue using TA321088 (LEP Antibody) at dilution 1/30, treated with fusion protein. (Original magnification: $\times 200$)



Immunohistochemistry of paraffin-embedded Human liver cancer tissue using TA321088 (LEP Antibody) at dilution 1/30 (Original magnification: $\times 200$)



Immunohistochemistry of paraffin-embedded Human liver cancer tissue using TA321088 (LEP Antibody) at dilution 1/30, treated with fusion protein. (Original magnification: $\times 200$)