

## Product datasheet for **TA321086**

### KCNA1 Rabbit Polyclonal Antibody

#### Product data:

Product Type:	Primary Antibodies
Applications:	WB
Recommended Dilution:	WB: 500-2000 WB positive control: Human kidney cancer tissue
Reactivity:	Human, Mouse, Rat
Host:	Rabbit
Isotype:	IgG
Clonality:	Polyclonal
Immunogen:	Synthetic peptide corresponding to a region derived from 460-472 amino acids of Human potassium voltage-gated channel, shaker-related subfamily, member 1 (episodic ataxia with myokymia)
Formulation:	PBS pH7.3, 0.05% NaN <sub>3</sub> , 50% glycerol
Concentration:	lot specific
Purification:	Antigen affinity purification
Conjugation:	Unconjugated
Storage:	Store at -20°C as received.
Stability:	Stable for 12 months from date of receipt.
Predicted Protein Size:	56 kDa
Gene Name:	potassium voltage-gated channel subfamily A member 1
Database Link:	<a href="#">NP_000208</a> <a href="#">Entrez Gene 16485 Mouse</a> <a href="#">Entrez Gene 24520 Rat</a> <a href="#">Entrez Gene 3736 Human</a> <a href="#">Q09470</a>



[View online »](#)

**Background:**

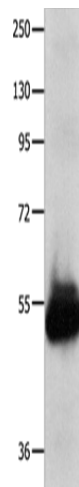
This gene encodes a voltage-gated delayed potassium channel that is phylogenetically related to the Drosophila Shaker channel. The encoded protein has six putative transmembrane segments (S1-S6); and the loop between S5 and S6 forms the pore and contains the conserved selectivity filter motif (GYGD). The functional channel is a homotetramer. The N-terminus of the channel is associated with beta subunits that can modify the inactivation properties of the channel as well as affect expression levels. The C-terminus of the channel is complexed to a PDZ domain protein that is responsible for channel targeting. Mutations in this gene have been associated with myokymia with periodic ataxia (AEMK).

**Synonyms:**

AEMK; EA1; HBK1; HUK1; KV1.1; MBK1; MK1; RBK1

**Protein Families:**

Druggable Genome, Ion Channels: Potassium, Transmembrane

**Product images:**

Gel: 8%SDS-PAGE

Lysate: 40 µg

Lane: Human kidney cancer tissue

Primary antibody: TA321086 (KCNA1 Antibody) at dilution 1/600

Secondary antibody: Goat anti rabbit IgG at 1/8000 dilution

Exposure time: 20 seconds