

## Product datasheet for **TA321082**

### KCNE1 Rabbit Polyclonal Antibody

#### Product data:

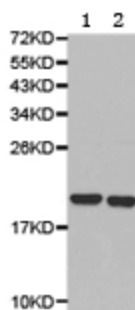
Product Type:	Primary Antibodies
Applications:	WB
Recommended Dilution:	WB: 1:500-2000
Reactivity:	Human, Mouse, Rat
Host:	Rabbit
Isotype:	IgG
Clonality:	Polyclonal
Immunogen:	Fusion protein corresponding to N terminal 105 amino acids of human potassium voltage-gated channel, Isk-related family, member 1
Formulation:	PBS pH7.3, 0.05% NaN <sub>3</sub> , 50% glycerol
Concentration:	lot specific
Purification:	Antigen affinity purification
Conjugation:	Unconjugated
Storage:	Store at -20°C as received.
Stability:	Stable for 12 months from date of receipt.
Predicted Protein Size:	15 kDa
Gene Name:	potassium voltage-gated channel subfamily E regulatory subunit 1
Database Link:	<a href="#">NP_000210</a> <a href="#">Entrez Gene 16509 MouseEntrez Gene 25471 RatEntrez Gene 3753 Human P15382</a>
Background:	Voltage-gated potassium channels play a variety of important roles in human health and disease. KCNE1, also known as MinK, belongs to a family of small transmembrane proteins (KCNE1, 2, 3, 4, and KCNE1L) that modulate the activity of several voltage-gated K <sup>+</sup> channels. KCNE1 functions as the modulatory $\beta$ -subunit of the pore-forming $\alpha$ -subunit KCNQ1, and alters several biophysical properties of KCNQ1 channels. Research studies have shown that several inherited mutations in KCNE1 result in long QT syndrome and deafness.
Synonyms:	5; ISK; JLNS; JLNS2; LQT2; LQT5; MinK



[View online »](#)

Protein Families: Druggable Genome, Ion Channels: Other, Transmembrane

### Product images:



Predicted band size: 15 kDa. Positive control: Mouse heart and testis tissue lysate. Recommended dilution: 1/500-2000. (Gel: 12%SDS-PAGE Lane 1: Mouse heart tissue lysate Lane 2: Mouse testis tissue lysate Lysates: 40 ug per lane Primary antibody: 1/500 dilution Secondary antibody: Goat anti Rabbit IgG - H&L (HRP) at 1/10000 dilution Exposure time: 1 minute)