

## Product datasheet for **TA321078**

### alpha 1 Glycine Receptor (GLRA1) Rabbit Polyclonal Antibody

#### Product data:

Product Type:	Primary Antibodies
Applications:	IHC, WB
Recommended Dilution:	WB: 500-2000 WB positive control: Mouse brain and Human fetal brain tissue IHC: 25-100 Positive control: Human colon cancer Predicted cell location: Cytoplasm
Reactivity:	Human, Mouse, Rat
Host:	Rabbit
Isotype:	IgG
Clonality:	Polyclonal
Immunogen:	Synthetic peptide corresponding to a region derived from 141-155 amino acids of human glycine receptor, alpha 1
Formulation:	PBS pH7.3, 0.05% NaN <sub>3</sub> , 50% glycerol
Concentration:	lot specific
Purification:	Antigen affinity purification
Conjugation:	Unconjugated
Storage:	Store at -20°C as received.
Stability:	Stable for 12 months from date of receipt.
Predicted Protein Size:	53 kDa
Gene Name:	glycine receptor alpha 1
Database Link:	<a href="#">NP_000162</a> <a href="#">Entrez Gene 14654 Mouse</a> <a href="#">Entrez Gene 25674 Rat</a> <a href="#">Entrez Gene 2741 Human</a> <a href="#">P23415</a>



[View online »](#)

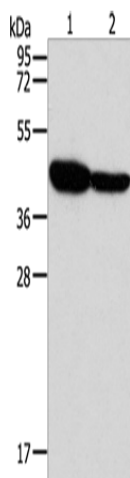
**Background:** The protein encoded by this gene is a subunit of a pentameric inhibitory glycine receptor. The receptor mediates postsynaptic inhibition in the central nervous system. Defects in this gene are a cause of startle disease (STHE), also known as hereditary hyperekplexia or congenital stiff-person syndrome. Two transcript variants encoding different isoforms have been found for this gene.

**Synonyms:** HKPX1; STHE

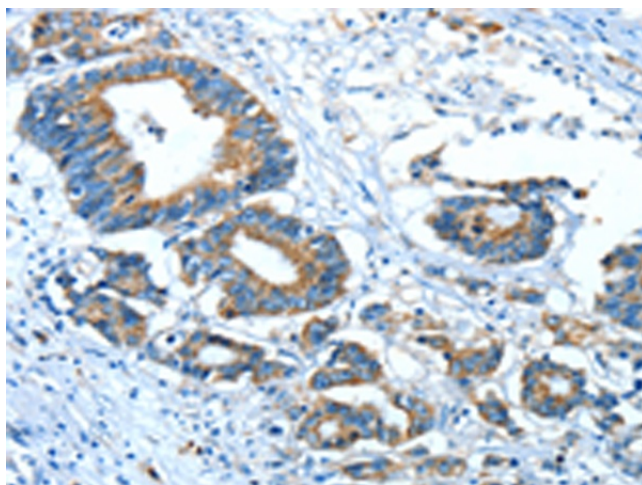
**Protein Families:** Druggable Genome, Ion Channels: Cys-loop Receptors, Transmembrane

**Protein Pathways:** Neuroactive ligand-receptor interaction

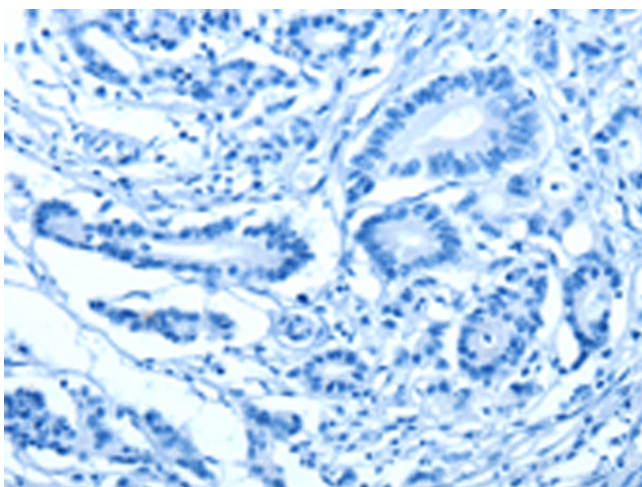
**Product images:**



Gel: 10%SDS-PAGE  
 Lysate: 40 µg  
 Lane 1-2: Mouse brain tissue  
 Human fetal brain tissue  
 Primary antibody: TA321078 (GLRA1 Antibody) at dilution 1/500  
 Secondary antibody: Goat anti rabbit IgG at 1/8000 dilution  
 Exposure time: 1 minute



Immunohistochemistry of paraffin-embedded Human colon cancer tissue using TA321078 (GLRA1 Antibody) at dilution 1/30 (Original magnification: ×200)



Immunohistochemistry of paraffin-embedded Human colon cancer tissue using TA321078 (GLRA1 Antibody) at dilution 1/30, treated with synthetic peptide. (Original magnification: ×200)