

## Product datasheet for **TA321075S**

### GJA1 Rabbit Polyclonal Antibody

#### Product data:

Product Type:	Primary Antibodies
Applications:	WB
Recommended Dilution:	WB: 500-2000 WB positive control: Rat brain tissue lysate
Reactivity:	Human, Mouse, Rat
Host:	Rabbit
Isotype:	IgG
Clonality:	Polyclonal
Immunogen:	Fusion protein corresponding to a region derived from 232-382 amino acids of human gap junction protein, alpha 1, 43kDa
Formulation:	PBS pH7.3, 0.05% NaN <sub>3</sub> , 50% glycerol
Purification:	Antigen affinity purification
Conjugation:	Unconjugated
Storage:	Store at -20°C as received.
Stability:	Stable for 12 months from date of receipt.
Predicted Protein Size:	43 kDa
Gene Name:	gap junction protein alpha 1
Database Link:	<a href="#">NP_000156</a> <a href="#">Entrez Gene 14609 Mouse</a> <a href="#">Entrez Gene 24392 Rat</a> <a href="#">Entrez Gene 2697 Human</a> <a href="#">P17302</a>
Background:	This gene is a member of the connexin gene family. The encoded protein is a component of gap junctions; which are composed of arrays of intercellular channels that provide a route for the diffusion of low molecular weight materials from cell to cell. The encoded protein is the major protein of gap junctions in the heart that are thought to have a crucial role in the synchronized contraction of the heart and in embryonic development. A related intronless pseudogene has been mapped to chromosome 5. Mutations in this gene have been associated with oculodentodigital dysplasia and heart malformations.
Synonyms:	AVSD3; CMDR; CX43; EKVP; GJAL; HLHS1; HSS; ODDD; PPKCA

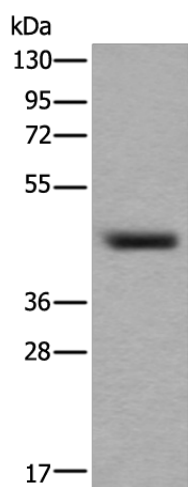


[View online »](#)

**Protein Families:** Druggable Genome, Ion Channels: Other, Transmembrane

**Protein Pathways:** Arrhythmogenic right ventricular cardiomyopathy (ARVC), Gap junction

**Product images:**



Gel: 8%SDS-PAGE

Lysate: 40  $\mu$ g

Lane: Rat brain tissue lysate

Primary antibody: [TA321075] (GJA1 Antibody) at dilution 1/400

Secondary antibody: Goat anti rabbit IgG at 1/8000 dilution

Exposure time: 2 minutes