

Product datasheet for **TA321070**

FGFR2 Rabbit Polyclonal Antibody

Product data:

Product Type:	Primary Antibodies
Applications:	IHC
Recommended Dilution:	IHC: 50-200 Positive control: Human thyroid cancer Predicted cell location: Cytoplasm
Reactivity:	Human, Mouse
Host:	Rabbit
Isotype:	IgG
Clonality:	Polyclonal
Immunogen:	Synthetic peptide corresponding to a region derived from 809-821 amino acids of Human Fibroblast growth factor receptor 2
Formulation:	PBS pH7.3, 0.05% NaN ₃ , 50% glycerol
Concentration:	lot specific
Purification:	Antigen affinity purification
Conjugation:	Unconjugated
Storage:	Store at -20°C as received.
Stability:	Stable for 12 months from date of receipt.
Predicted Protein Size:	92 kDa
Gene Name:	fibroblast growth factor receptor 2
Database Link:	NP_000132 Entrez Gene 14183 Mouse Entrez Gene 2263 Human P21802



[View online »](#)

Background:

The protein encoded by this gene is a member of the fibroblast growth factor receptor family; where amino acid sequence is highly conserved between members and throughout evolution. FGFR family members differ from one another in their ligand affinities and tissue distribution. A full-length representative protein consists of an extracellular region; composed of three immunoglobulin-like domains; a single hydrophobic membrane-spanning segment and a cytoplasmic tyrosine kinase domain. The extracellular portion of the protein interacts with fibroblast growth factors; setting in motion a cascade of downstream signals; ultimately influencing mitogenesis and differentiation. This particular family member is a high-affinity receptor for acidic; basic and/or keratinocyte growth factor; depending on the isoform. Mutations in this gene are associated with Crouzon syndrome; Pfeiffer syndrome; Craniosynostosis; Apert syndrome; Jackson-Weiss syndrome; Beare-Stevenson cutis gyrata syndrome; Saethre-Chotzen syndrome; and syndromic craniosynostosis. Multiple alternatively spliced transcript variants encoding different isoforms have been noted for this gene.

Synonyms:

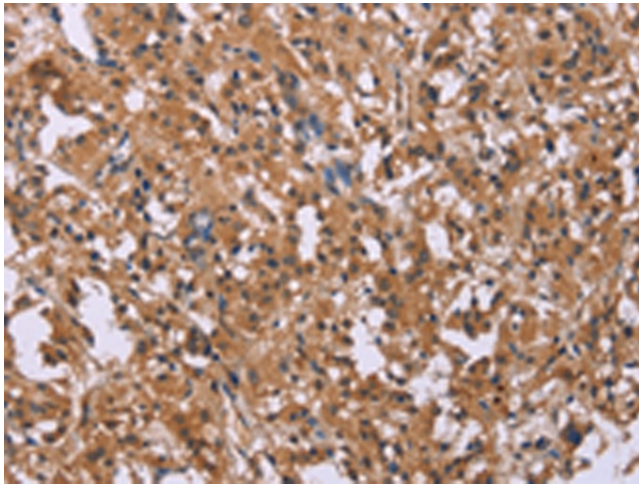
BBDS; BEK; BFR-1; CD332; CEK3; CFD1; ECT1; JWS; K-SAM; KGFR; TK14; TK25

Protein Families:

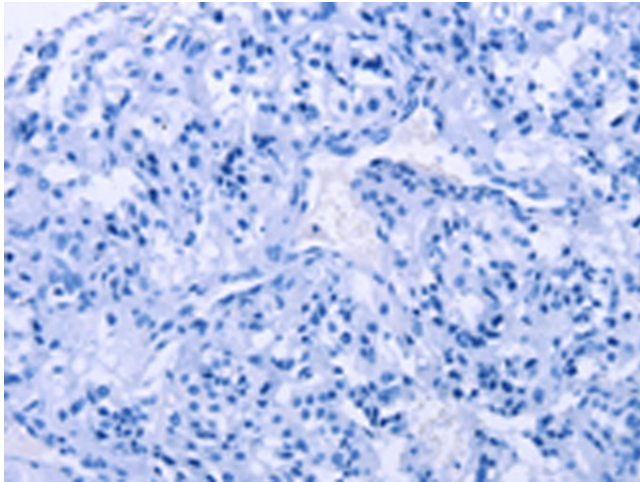
Druggable Genome, Protein Kinase, Secreted Protein, Transmembrane

Protein Pathways:

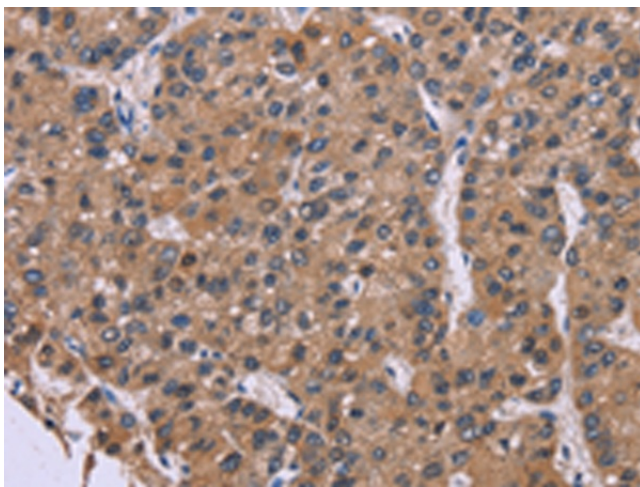
Endocytosis, MAPK signaling pathway, Pathways in cancer, Prostate cancer, Regulation of actin cytoskeleton

Product images:

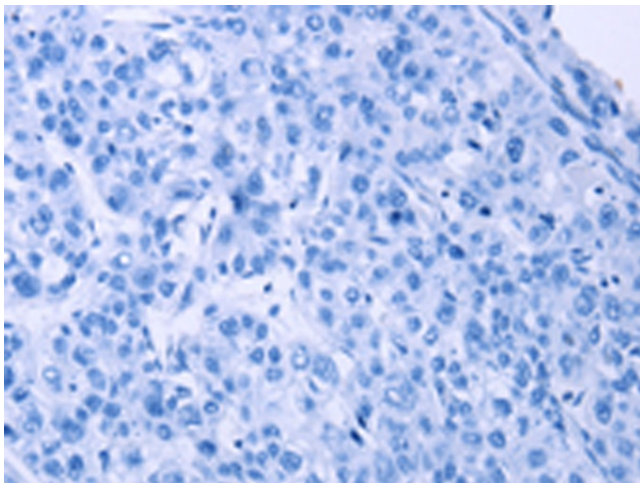
Immunohistochemistry of paraffin-embedded Human thyroid cancer tissue using TA321070 (FGFR2 Antibody) at dilution 1/20 (Original magnification: $\times 200$)



Immunohistochemistry of paraffin-embedded Human thyroid cancer tissue using TA321070 (FGFR2 Antibody) at dilution 1/20, treated with synthetic peptide. (Original magnification: $\times 200$)



Immunohistochemistry of paraffin-embedded Human liver cancer tissue using TA321070 (FGFR2 Antibody) at dilution 1/20 (Original magnification: $\times 200$)



Immunohistochemistry of paraffin-embedded Human liver cancer tissue using TA321070 (FGFR2 Antibody) at dilution 1/20, treated with synthetic peptide. (Original magnification: $\times 200$)