

## Product datasheet for **TA321069**

### FGFR2 Rabbit Polyclonal Antibody

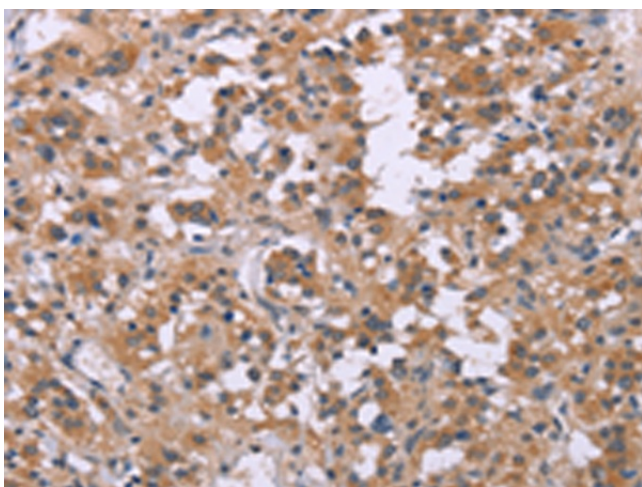
#### Product data:

Product Type:	Primary Antibodies
Applications:	IHC
Recommended Dilution:	IHC: 25-100 Positive control: Human thyroid cancer Predicted cell location: Cytoplasm
Reactivity:	Human, Mouse
Host:	Rabbit
Isotype:	IgG
Clonality:	Polyclonal
Immunogen:	Synthetic peptide corresponding to a region derived from 809-821 amino acids of Human Fibroblast growth factor receptor 2
Formulation:	PBS pH7.3, 0.05% NaN <sub>3</sub> , 50% glycerol
Concentration:	lot specific
Purification:	Antigen affinity purification
Conjugation:	Unconjugated
Storage:	Store at -20°C as received.
Stability:	Stable for 12 months from date of receipt.
Gene Name:	fibroblast growth factor receptor 2
Database Link:	<a href="#">NP_000132</a> <a href="#">Entrez Gene 14183 Mouse</a> <a href="#">Entrez Gene 2263 Human</a> <a href="#">P21802</a>

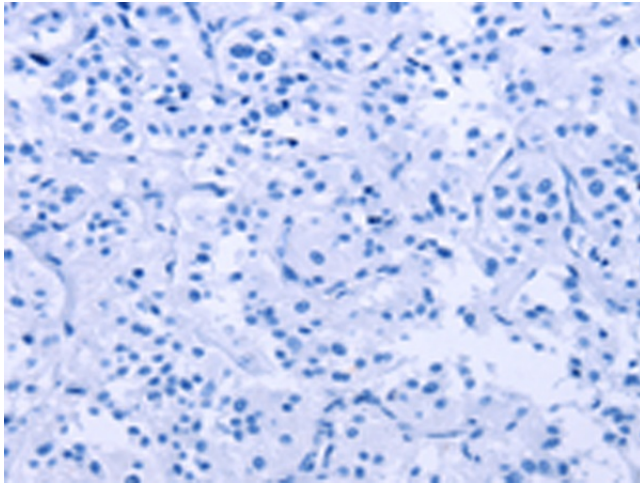


[View online »](#)

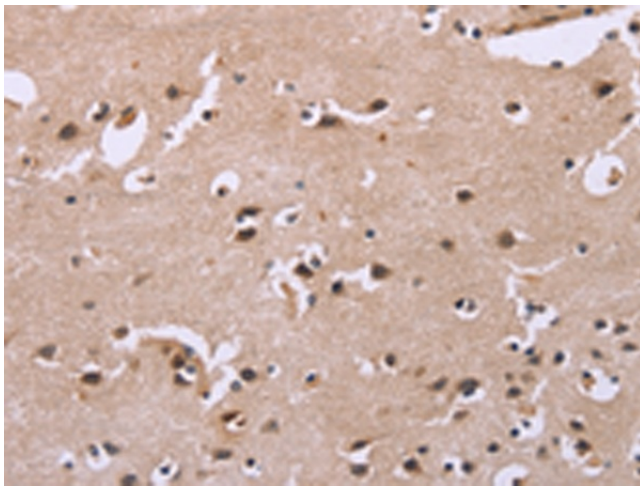
<b>Background:</b>	The protein encoded by this gene is a member of the fibroblast growth factor receptor family; where amino acid sequence is highly conserved between members and throughout evolution. FGFR family members differ from one another in their ligand affinities and tissue distribution. A full-length representative protein consists of an extracellular region; composed of three immunoglobulin-like domains; a single hydrophobic membrane-spanning segment and a cytoplasmic tyrosine kinase domain. The extracellular portion of the protein interacts with fibroblast growth factors; setting in motion a cascade of downstream signals; ultimately influencing mitogenesis and differentiation. This particular family member is a high-affinity receptor for acidic; basic and/or keratinocyte growth factor; depending on the isoform.
<b>Synonyms:</b>	BBDS; BEK; BFR-1; CD332; CEK3; CFD1; ECT1; JWS; K-SAM; KGFR; TK14; TK25
<b>Protein Families:</b>	Druggable Genome, Protein Kinase, Secreted Protein, Transmembrane
<b>Protein Pathways:</b>	Endocytosis, MAPK signaling pathway, Pathways in cancer, Prostate cancer, Regulation of actin cytoskeleton

**Product images:**

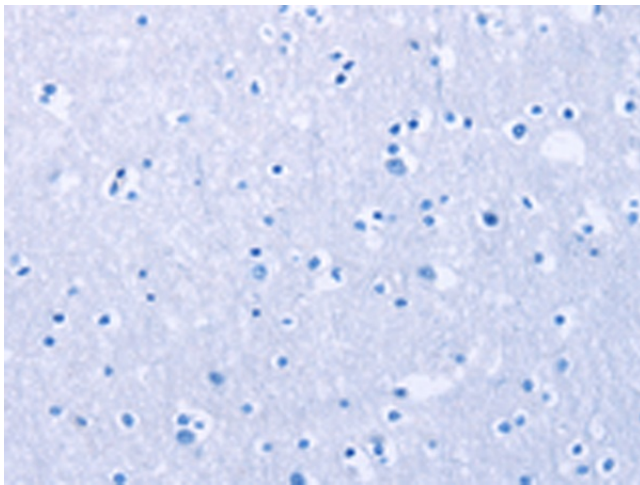
Immunohistochemistry of paraffin-embedded Human thyroid cancer tissue using TA321069 (FGFR2 Antibody) at dilution 1/20 (Original magnification:  $\times 200$ )



Immunohistochemistry of paraffin-embedded Human thyroid cancer tissue using TA321069 (FGFR2 Antibody) at dilution 1/20, treated with synthetic peptide. (Original magnification: ×200)



Immunohistochemistry of paraffin-embedded Human brain tissue using TA321069 (FGFR2 Antibody) at dilution 1/20 (Original magnification: ×200)



Immunohistochemistry of paraffin-embedded Human brain tissue using TA321069 (FGFR2 Antibody) at dilution 1/20, treated with synthetic peptide. (Original magnification: ×200)