

## Product datasheet for **TA321068**

### Estrogen Receptor 1 (ESR1) Rabbit Polyclonal Antibody

#### Product data:

Product Type:	Primary Antibodies
Applications:	IHC
Recommended Dilution:	IHC: 100-300 Positive control: Human brain Predicted cell location: Cytoplasm, Nucleus
Reactivity:	Human, Mouse, Rat
Host:	Rabbit
Isotype:	IgG
Clonality:	Polyclonal
Immunogen:	Synthetic peptide corresponding to a region derived from 247-261 amino acids of Human estrogen receptor 1
Formulation:	PBS pH7.3, 0.05% NaN <sub>3</sub> , 50% glycerol
Concentration:	lot specific
Purification:	Antigen affinity purification
Conjugation:	Unconjugated
Storage:	Store at -20°C as received.
Stability:	Stable for 12 months from date of receipt.
Gene Name:	estrogen receptor 1
Database Link:	<a href="#">NP_000116</a> <a href="#">Entrez Gene 13982 Mouse</a> <a href="#">Entrez Gene 24890 Rat</a> <a href="#">Entrez Gene 2099 Human</a> <a href="#">P03372</a>



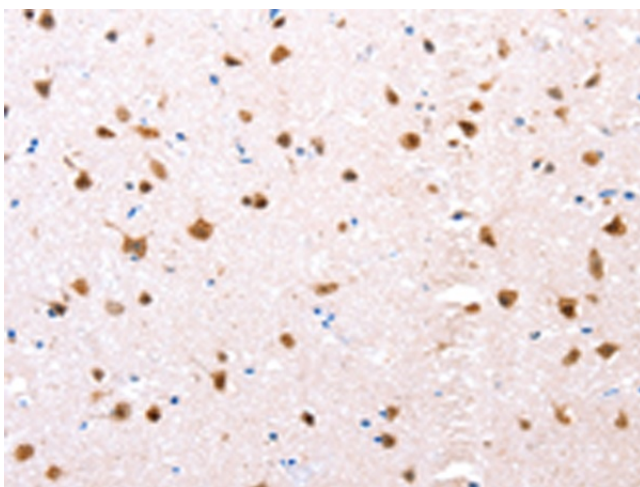
[View online »](#)

**Background:** This gene encodes an estrogen receptor; a ligand-activated transcription factor composed of several domains important for hormone binding; DNA binding; and activation of transcription. The protein localizes to the nucleus where it may form a homodimer or a heterodimer with estrogen receptor 2. Estrogen and its receptors are essential for sexual development and reproductive function; but also play a role in other tissues such as bone. Estrogen receptors are also involved in pathological processes including breast cancer; endometrial cancer; and osteoporosis. Alternative splicing results in several transcript variants; which differ in their 5' UTRs and use different promoters.

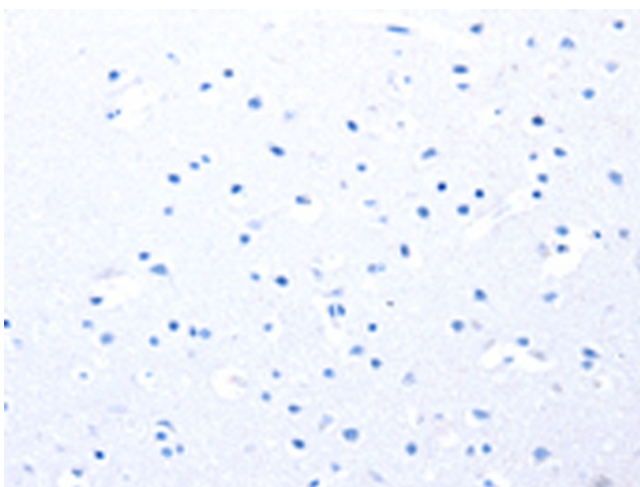
**Synonyms:** ER; Era; ESR; ESRA; ESTRR; NR3A1

**Protein Families:** Druggable Genome, Nuclear Hormone Receptor, Transcription Factors

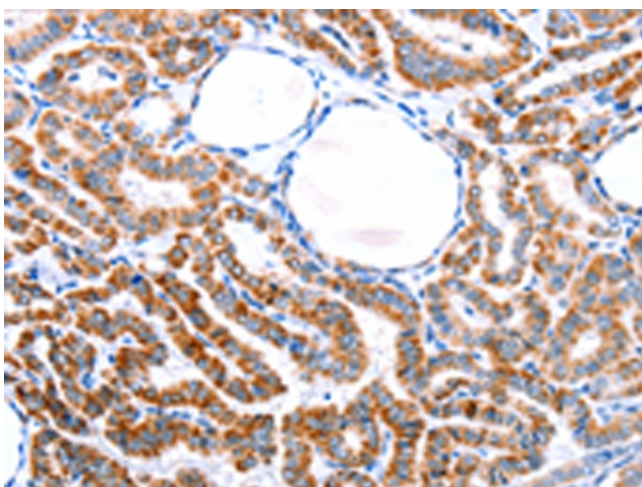
## Product images:



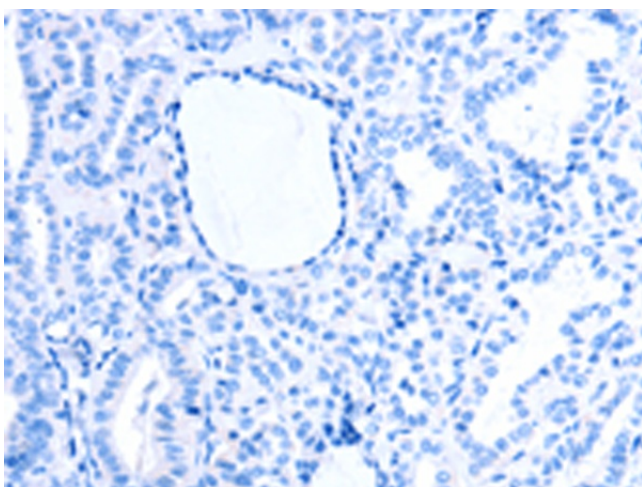
Immunohistochemistry of paraffin-embedded Human brain tissue using TA321068 (ESR1 Antibody) at dilution 1/76 (Original magnification: ×200)



Immunohistochemistry of paraffin-embedded Human brain tissue using TA321068 (ESR1 Antibody) at dilution 1/76, treated with synthetic peptide. (Original magnification: ×200)



Immunohistochemistry of paraffin-embedded Human thyroid cancer tissue using TA321068 (ESR1 Antibody) at dilution 1/76 (Original magnification: ×200)



Immunohistochemistry of paraffin-embedded Human thyroid cancer tissue using TA321068 (ESR1 Antibody) at dilution 1/76, treated with synthetic peptide. (Original magnification: ×200)