

## Product datasheet for **TA321060S**

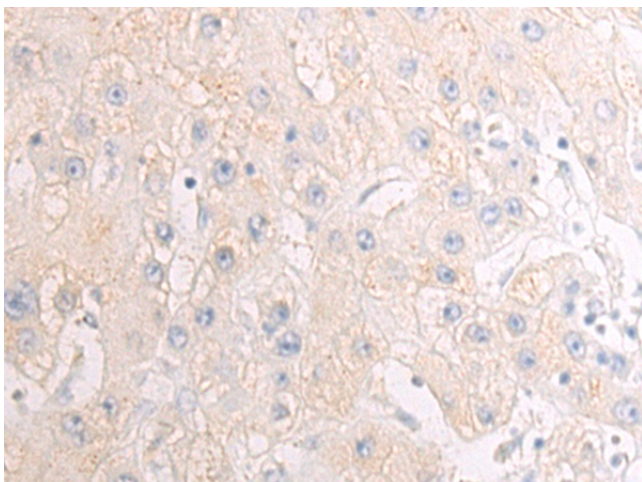
### Epoxide hydrolase (EPHX1) Rabbit Polyclonal Antibody

#### Product data:

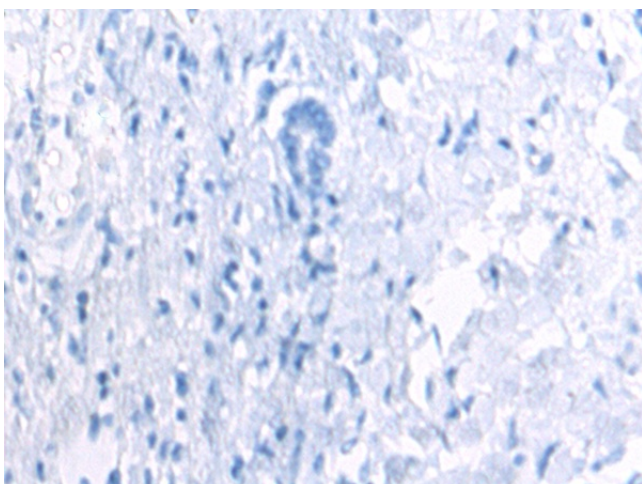
Product Type:	Primary Antibodies
Applications:	IHC
Recommended Dilution:	IHC: 50-200 Positive control: Human liver cancer Predicted cell location: Cytoplasm
Reactivity:	Human, Mouse, Rat
Host:	Rabbit
Isotype:	IgG
Clonality:	Polyclonal
Immunogen:	Fusion protein corresponding to a region derived from 106-455 amino acids of Human Epoxide hydrolase 1
Formulation:	PBS pH7.3, 0.05% NaN <sub>3</sub> , 50% glycerol
Purification:	Antigen affinity purification
Conjugation:	Unconjugated
Storage:	Store at -20°C as received.
Stability:	Stable for 12 months from date of receipt.
Gene Name:	epoxide hydrolase 1
Database Link:	<a href="#">NP_000111</a> <a href="#">Entrez Gene 13849 Mouse</a> <a href="#">Entrez Gene 25315 Rat</a> <a href="#">Entrez Gene 2052 Human</a> <a href="#">P07099</a>
Background:	Epoxide hydrolase is a critical biotransformation enzyme that converts epoxides from the degradation of aromatic compounds to trans-dihydrodiols which can be conjugated and excreted from the body. Epoxide hydrolase functions in both the activation and detoxification of exogenous chemicals such as polycyclic aromatic hydrocarbons. Mutations in this gene cause preeclampsia; epoxide hydrolase deficiency or increased epoxide hydrolase activity.
Synonyms:	EPHX; EPOX; HYL1; MEH
Protein Families:	Druggable Genome, Protease
Protein Pathways:	Metabolism of xenobiotics by cytochrome P450



[View online »](#)

**Product images:**

Immunohistochemistry of paraffin-embedded Human liver cancer tissue using [TA321060] (EPHX1 Antibody) at dilution 1/75 (Original magnification:  $\times 200$ )



Immunohistochemistry of paraffin-embedded Human liver cancer tissue using [TA321060] (EPHX1 Antibody) at dilution 1/75, treated with fusion protein. (Original magnification:  $\times 200$ )