

Product datasheet for **TA321056**

CYP1B1 Rabbit Polyclonal Antibody

Product data:

Product Type:	Primary Antibodies
Applications:	WB
Recommended Dilution:	WB: 500-2000 WB positive control: Human fetal liver and brain tissue
Reactivity:	Human, Mouse, Rat
Host:	Rabbit
Isotype:	IgG
Clonality:	Polyclonal
Immunogen:	Fusion protein corresponding to C terminal 250 amino acids of human cytochrome P450, family 1, subfamily B, polypeptide 1
Formulation:	PBS pH7.3, 0.05% NaN ₃ , 50% glycerol
Concentration:	lot specific
Purification:	Antigen affinity purification
Conjugation:	Unconjugated
Storage:	Store at -20°C as received.
Stability:	Stable for 12 months from date of receipt.
Predicted Protein Size:	61 kDa
Gene Name:	cytochrome P450 family 1 subfamily B member 1
Database Link:	NP_000095 Entrez Gene 13078 Mouse Entrez Gene 25426 Rat Entrez Gene 1545 Human Q16678
Background:	This gene encodes a member of the cytochrome P450 superfamily of enzymes. The cytochrome P450 proteins are monooxygenases which catalyze many reactions involved in drug metabolism and synthesis of cholesterol; steroids and other lipids. The enzyme encoded by this gene localizes to the endoplasmic reticulum and metabolizes procarcinogens such as polycyclic aromatic hydrocarbons and 17beta-estradiol. Mutations in this gene have been associated with primary congenital glaucoma; therefore it is thought that the enzyme also metabolizes a signaling molecule involved in eye development; possibly a steroid.



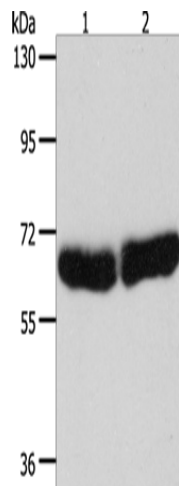
[View online »](#)

Synonyms: CP1B; CYP1B1; GLC3A; P4501B1

Protein Families: Druggable Genome, P450

Protein Pathways: Metabolism of xenobiotics by cytochrome P450, Tryptophan metabolism

Product images:



Gel: 8%SDS-PAGE
Lysate: 40 µg
Lane 1-2: Human fetal liver tissue
Human brain tissue
Primary antibody: TA321056 (CYP1B1 Antibody)
at dilution 1/250
Secondary antibody: Goat anti rabbit IgG at
1/8000 dilution
Exposure time: 30 seconds