

## Product datasheet for **TA321055**

### CYP1B1 Rabbit Polyclonal Antibody

#### Product data:

Product Type:	Primary Antibodies
Applications:	IHC
Recommended Dilution:	IHC: 25-100 Positive control: Human thyroid cancer Predicted cell location: Cytoplasm
Reactivity:	Human, Mouse, Rat
Host:	Rabbit
Isotype:	IgG
Clonality:	Polyclonal
Immunogen:	Fusion protein corresponding to C terminal 250 amino acids of human cytochrome P450, family 1, subfamily B, polypeptide 1
Formulation:	PBS pH7.3, 0.05% NaN <sub>3</sub> , 50% glycerol
Concentration:	lot specific
Purification:	Antigen affinity purification
Conjugation:	Unconjugated
Storage:	Store at -20°C as received.
Stability:	Stable for 12 months from date of receipt.
Gene Name:	cytochrome P450 family 1 subfamily B member 1
Database Link:	<a href="#">NP_000095</a> <a href="#">Entrez Gene 13078 Mouse</a> <a href="#">Entrez Gene 25426 Rat</a> <a href="#">Entrez Gene 1545 Human</a> <a href="#">Q16678</a>
Background:	This gene encodes a member of the cytochrome P450 superfamily of enzymes. The cytochrome P450 proteins are monooxygenases which catalyze many reactions involved in drug metabolism and synthesis of cholesterol; steroids and other lipids. The enzyme encoded by this gene localizes to the endoplasmic reticulum and metabolizes procarcinogens such as polycyclic aromatic hydrocarbons and 17beta-estradiol. Mutations in this gene have been associated with primary congenital glaucoma; therefore it is thought that the enzyme also metabolizes a signaling molecule involved in eye development; possibly a steroid.



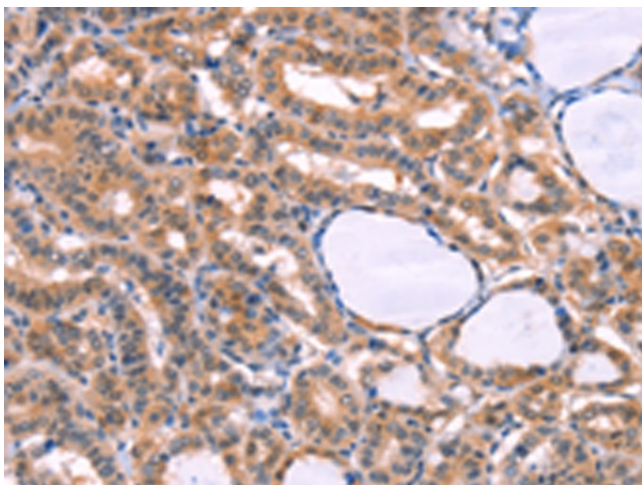
[View online »](#)

**Synonyms:** CP1B; CYP1B1; GLC3A; P4501B1

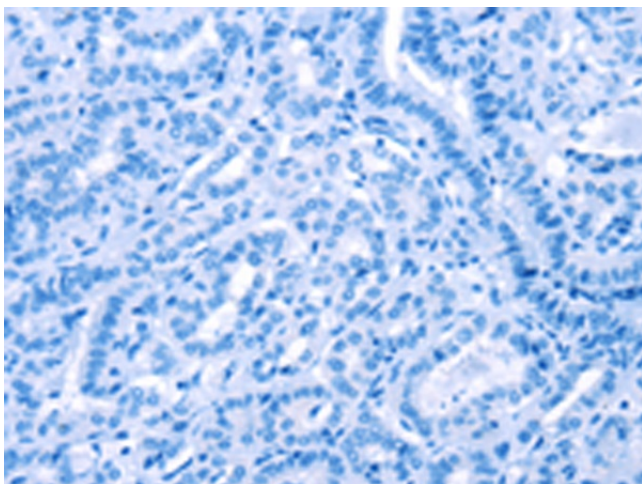
**Protein Families:** Druggable Genome, P450

**Protein Pathways:** Metabolism of xenobiotics by cytochrome P450, Tryptophan metabolism

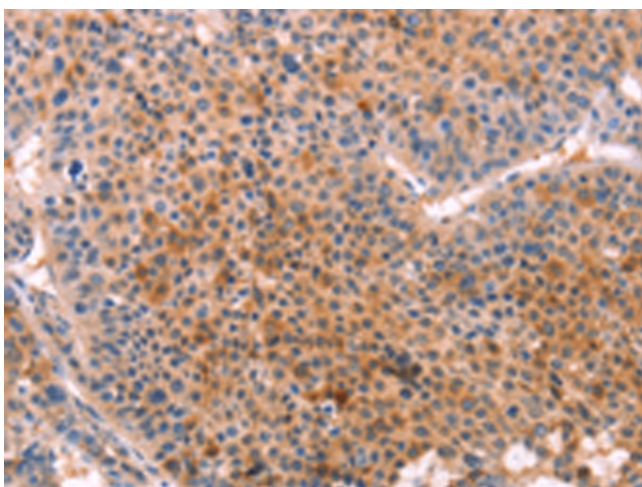
**Product images:**



Immunohistochemistry of paraffin-embedded Human thyroid cancer tissue using TA321055 (CYP1B1 Antibody) at dilution 1/20 (Original magnification: ×200)



Immunohistochemistry of paraffin-embedded Human thyroid cancer tissue using TA321055 (CYP1B1 Antibody) at dilution 1/20, treated with fusion protein. (Original magnification: ×200)



Immunohistochemistry of paraffin-embedded Human liver cancer tissue using TA321055 (CYP1B1 Antibody) at dilution 1/20 (Original magnification: ×200)



Immunohistochemistry of paraffin-embedded Human liver cancer tissue using TA321055 (CYP1B1 Antibody) at dilution 1/20, treated with fusion protein. (Original magnification: ×200)