

## Product datasheet for **TA321053**

### Aromatase (CYP19A1) Rabbit Polyclonal Antibody

#### Product data:

Product Type:	Primary Antibodies
Applications:	IHC
Recommended Dilution:	IHC: 10-50 Positive control: Human esophagus cancer Predicted cell location: Cell membrane
Reactivity:	Human, Mouse, Rat
Host:	Rabbit
Isotype:	IgG
Clonality:	Polyclonal
Immunogen:	Synthetic peptide corresponding to a region derived from 240-255 amino acids of Human Aromatase
Formulation:	PBS pH7.3, 0.05% NaN <sub>3</sub> , 50% glycerol
Concentration:	lot specific
Purification:	Antigen affinity purification
Conjugation:	Unconjugated
Storage:	Store at -20°C as received.
Stability:	Stable for 12 months from date of receipt.
Predicted Protein Size:	58 kDa
Gene Name:	cytochrome P450 family 19 subfamily A member 1
Database Link:	<a href="#">NP_000094</a> <a href="#">Entrez Gene 13075 Mouse</a> <a href="#">Entrez Gene 25147 Rat</a> <a href="#">Entrez Gene 1588 Human P11511</a>



[View online »](#)

**Background:**

This gene encodes a member of the cytochrome P450 superfamily of enzymes. The cytochrome P450 proteins are monooxygenases which catalyze many reactions involved in drug metabolism and synthesis of cholesterol; steroids and other lipids. This protein localizes to the endoplasmic reticulum and catalyzes the last steps of estrogen biosynthesis; three successive hydroxylations of the A ring of androgens. Mutations in this gene can result in either increased or decreased aromatase activity; the associated phenotypes suggest that estrogen functions both as a sex steroid hormone and in growth or differentiation. The gene expresses two transcript variants.

**Synonyms:**

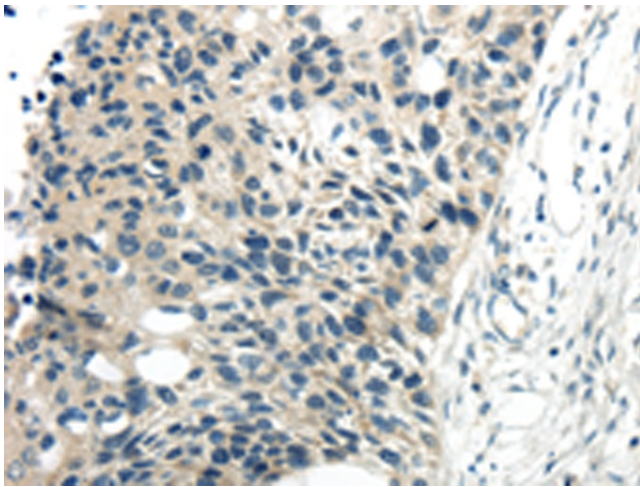
ARO; ARO1; CPV1; CYAR; CYP19; CYPXIX; P-450AROM

**Protein Families:**

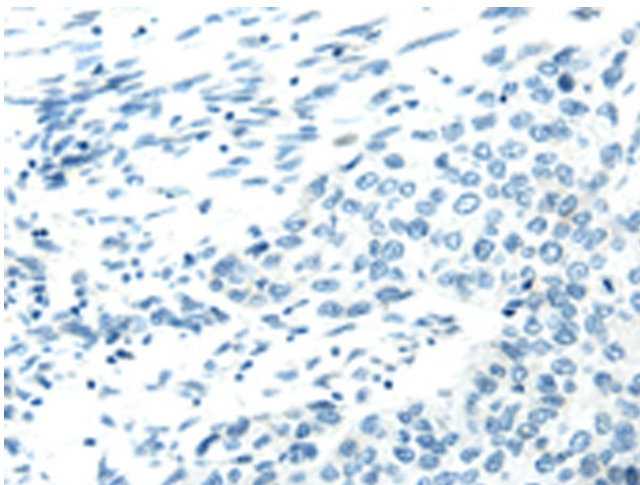
Druggable Genome, P450

**Protein Pathways:**

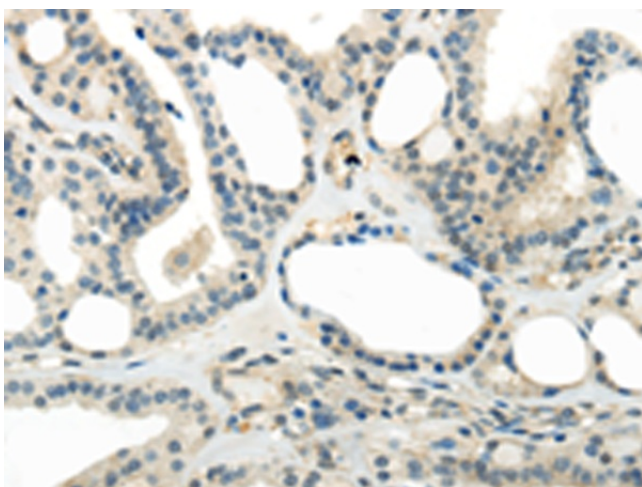
Androgen and estrogen metabolism, Metabolic pathways

**Product images:**

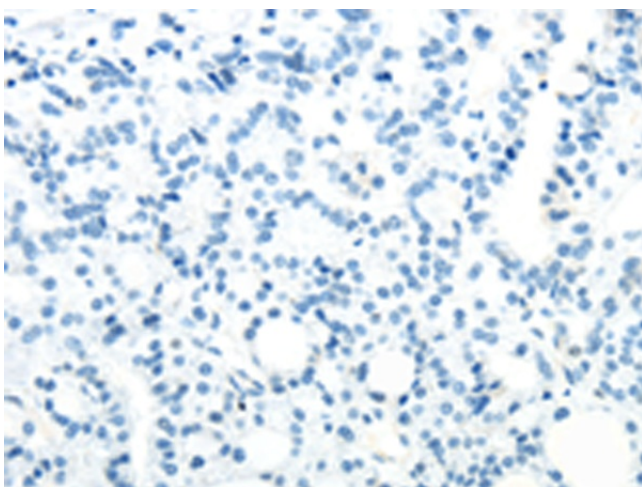
Immunohistochemistry of paraffin-embedded Human esophagus cancer tissue using TA321053 (CYP19A1 Antibody) at dilution 1/30 (Original magnification:  $\times 200$ )



Immunohistochemistry of paraffin-embedded Human esophagus cancer tissue using TA321053 (CYP19A1 Antibody) at dilution 1/30, treated with synthetic peptide. (Original magnification:  $\times 200$ )



Immunohistochemistry of paraffin-embedded Human thyroid cancer tissue using TA321053 (CYP19A1 Antibody) at dilution 1/30 (Original magnification: ×200)



Immunohistochemistry of paraffin-embedded Human thyroid cancer tissue using TA321053 (CYP19A1 Antibody) at dilution 1/30, treated with synthetic peptide. (Original magnification: ×200)