

Product datasheet for **TA321051**

CNG1 (CNGA1) Rabbit Polyclonal Antibody

Product data:

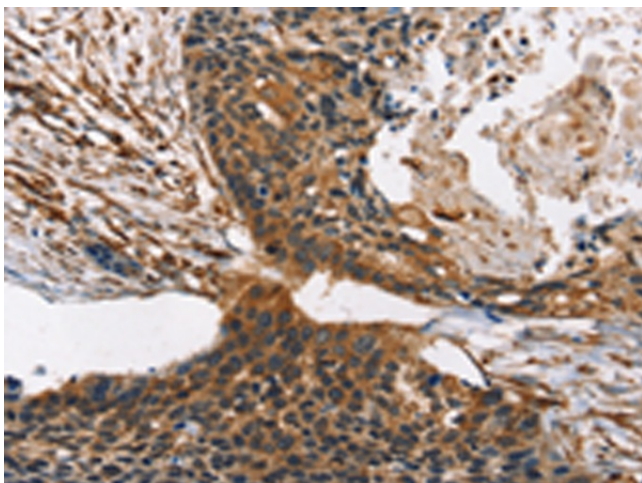
Product Type:	Primary Antibodies
Applications:	IHC
Recommended Dilution:	IHC: 25-100 Positive control: Human esophagus cancer Predicted cell location: Cytoplasm and Cell membrane
Reactivity:	Human
Host:	Rabbit
Isotype:	IgG
Clonality:	Polyclonal
Immunogen:	Synthetic peptide corresponding to a region derived from 45-58 amino acids of Human cyclic nucleotide gated channel alpha 1
Formulation:	PBS pH7.3, 0.05% NaN ₃ , 50% glycerol
Concentration:	lot specific
Purification:	Antigen affinity purification
Conjugation:	Unconjugated
Storage:	Store at -20°C as received.
Stability:	Stable for 12 months from date of receipt.
Gene Name:	cyclic nucleotide gated channel alpha 1
Database Link:	NP_000078 Entrez Gene 1259 Human P29973
Background:	The protein encoded by this gene is involved in phototransduction. Along with another protein; the encoded protein forms a cGMP-gated cation channel in the plasma membrane; allowing depolarization of rod photoreceptors. This represents the last step in the phototransduction pathway. Defects in this gene are a cause of retinitis pigmentosa autosomal recessive (ARRP) disease. Two transcript variants encoding different isoforms have been found for this gene.
Synonyms:	CNCG; CNCG1; CNG-1; CNG1; RCNC1; RCNCa; RCNCalpha; RP49



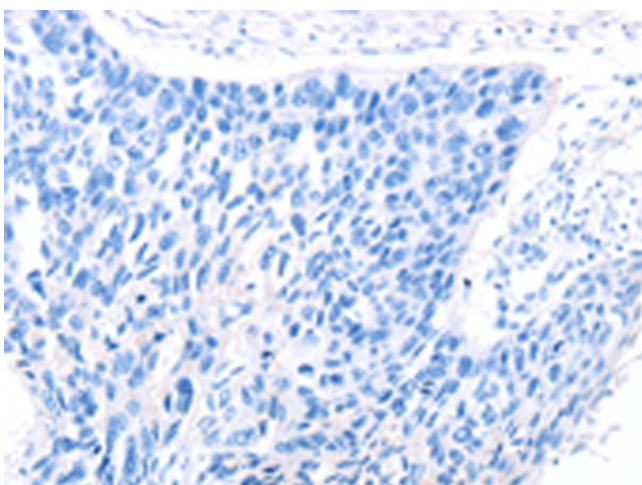
[View online »](#)

Protein Families: Druggable Genome, Ion Channels: Cyclic nucleotide gated, Transmembrane

Product images:



Immunohistochemistry of paraffin-embedded Human esophagus cancer tissue using TA321051 (CNGA1 Antibody) at dilution 1/40 (Original magnification: $\times 200$)



Immunohistochemistry of paraffin-embedded Human esophagus cancer tissue using TA321051 (CNGA1 Antibody) at dilution 1/40, treated with synthetic peptide. (Original magnification: $\times 200$)