

Product datasheet for **TA321049S**

AVPR V2 (AVPR2) Rabbit Polyclonal Antibody

Product data:

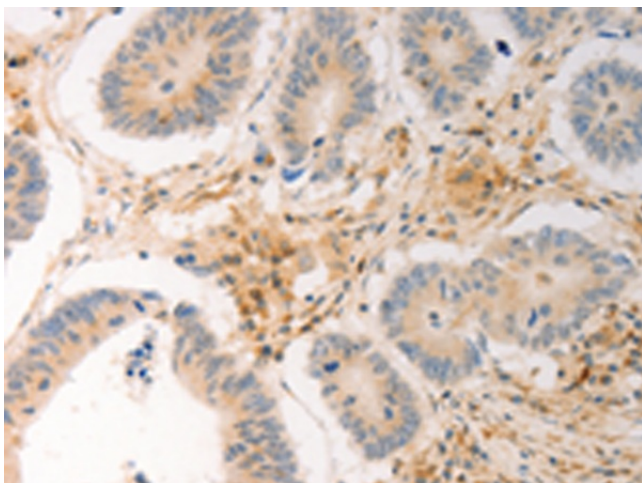
Product Type:	Primary Antibodies
Applications:	IHC
Recommended Dilution:	IHC: 25-100 Positive control: Human colon cancer Predicted cell location: Cytoplasm
Reactivity:	Human
Host:	Rabbit
Isotype:	IgG
Clonality:	Polyclonal
Immunogen:	Synthetic peptide corresponding to a region derived from 359-371 amino acids of human arginine vasopressin receptor 2
Formulation:	PBS pH7.3, 0.05% NaN ₃ , 50% glycerol
Purification:	Antigen affinity purification
Conjugation:	Unconjugated
Storage:	Store at -20°C as received.
Stability:	Stable for 12 months from date of receipt.
Gene Name:	arginine vasopressin receptor 2
Database Link:	NP_000045 Entrez Gene 554 Human P30518
Background:	This gene encodes a member of the ASPP (apoptosis-stimulating protein of p53) family of p53 interacting proteins. The protein contains four ankyrin repeats and an SH3 domain involved in protein-protein interactions. It is localized to the perinuclear region of the cytoplasm; and regulates apoptosis and cell growth through interactions with other regulatory molecules including members of the p53 family. Multiple transcript variants encoding different isoforms have been found for this gene.
Synonyms:	ADHR; DI1; DIR; DIR3; NDI; V2R
Protein Families:	Druggable Genome, GPCR, Transmembrane



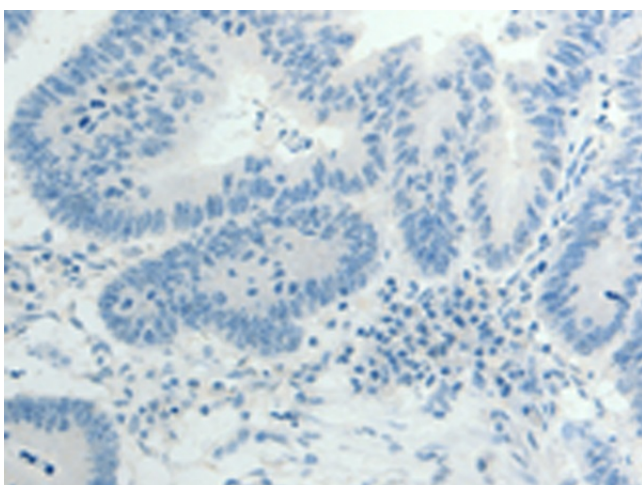
[View online »](#)

Protein Pathways: Neuroactive ligand-receptor interaction

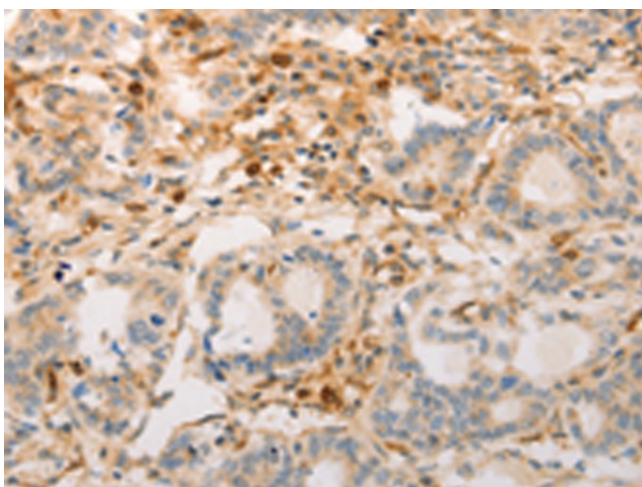
Product images:



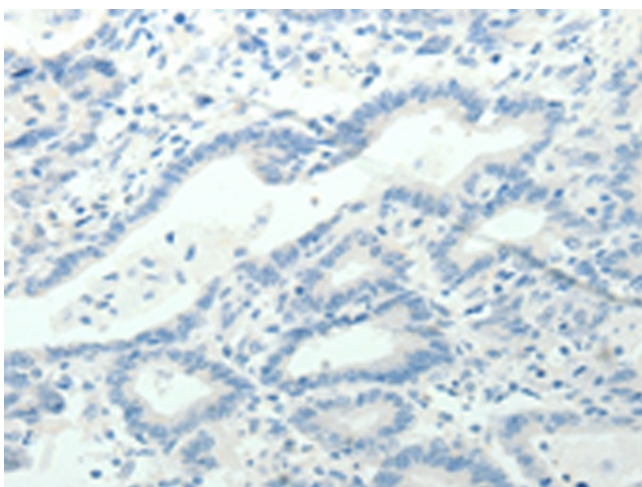
Immunohistochemistry of paraffin-embedded Human colon cancer tissue using [TA321049] (AVPR2 Antibody) at dilution 1/30 (Original magnification: $\times 200$)



Immunohistochemistry of paraffin-embedded Human colon cancer tissue using [TA321049] (AVPR2 Antibody) at dilution 1/30, treated with synthetic peptide. (Original magnification: $\times 200$)



Immunohistochemistry of paraffin-embedded Human gastric cancer tissue using [TA321049] (AVPR2 Antibody) at dilution 1/30 (Original magnification: $\times 200$)



Immunohistochemistry of paraffin-embedded Human gastric cancer tissue using [TA321049] (AVPR2 Antibody) at dilution 1/30, treated with synthetic peptide. (Original magnification: $\times 200$)