

Product datasheet for **TA321041**

Angiotensinogen (AGT) Rabbit Polyclonal Antibody

Product data:

Product Type:	Primary Antibodies
Applications:	IHC, WB
Recommended Dilution:	ELISA: 1:2000-5000, WB: 1:1000-5000, IHC: 1:25-100
Reactivity:	Human, Mouse, Rat
Host:	Rabbit
Isotype:	IgG
Clonality:	Polyclonal
Immunogen:	Synthetic peptide corresponding to a region derived from 34-41 amino acids of human angiotensinogen (serpin peptidase inhibitor, clade A, member 8)
Formulation:	PBS pH7.3, 0.05% NaN ₃ , 50% glycerol
Concentration:	lot specific
Purification:	Antigen affinity purification
Conjugation:	Unconjugated
Storage:	Store at -20°C as received.
Stability:	Stable for 12 months from date of receipt.
Predicted Protein Size:	53 kDa
Gene Name:	angiotensinogen
Database Link:	NP_000020 Entrez Gene 11606 Mouse Entrez Gene 24179 Rat Entrez Gene 183 Human P01019



[View online »](#)

Background:

The protein encoded by this gene; pre-angiotensinogen or angiotensinogen precursor; is expressed in the liver and is cleaved by the enzyme renin in response to lowered blood pressure. The resulting product; angiotensin I; is then cleaved by angiotensin converting enzyme (ACE) to generate the physiologically active enzyme angiotensin II. The protein is involved in maintaining blood pressure and in the pathogenesis of essential hypertension and preeclampsia. Mutations in this gene are associated with susceptibility to essential hypertension; and can cause renal tubular dysgenesis; a severe disorder of renal tubular development. Defects in this gene have also been associated with non-familial structural atrial fibrillation; and inflammatory bowel disease.

Synonyms:

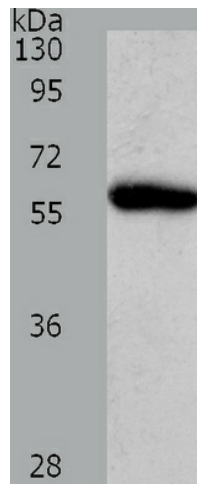
ANHU; SERPINA8

Protein Families:

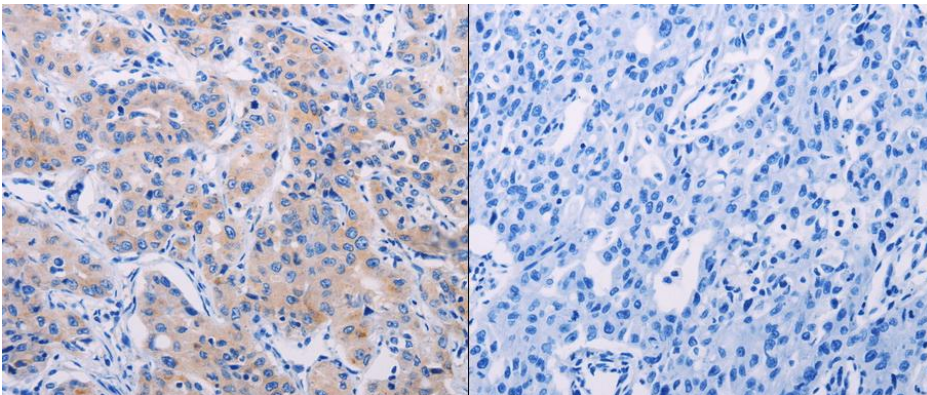
Druggable Genome, Secreted Protein

Protein Pathways:

Renin-angiotensin system

Product images:

Predicted band size: 53 kDa. Positive control: Human liver cancer tissue lysate. Recommended dilution: 1/1000-5000. (Gel: 10%SDS-PAGE Lysate: 40 ug per lane Primary antibody: 1/1100 dilution Secondary antibody: Goat anti Rabbit IgG - H&L (HRP) at 1/10000 dilution Exposure time: 5 minutes)



Predicted cell location: Cytoplasm. Positive control: Human lung cancer tissue. Recommended dilution: 1/25-100 The image on the left is immunohistochemistry of paraffin-embedded human lung cancer tissue using AGT antibody at dilution 1/50, on the right is treated with the synthetic peptide. (Original magnification:x200)